

PARTNERSHIPS

Mix vigorously!





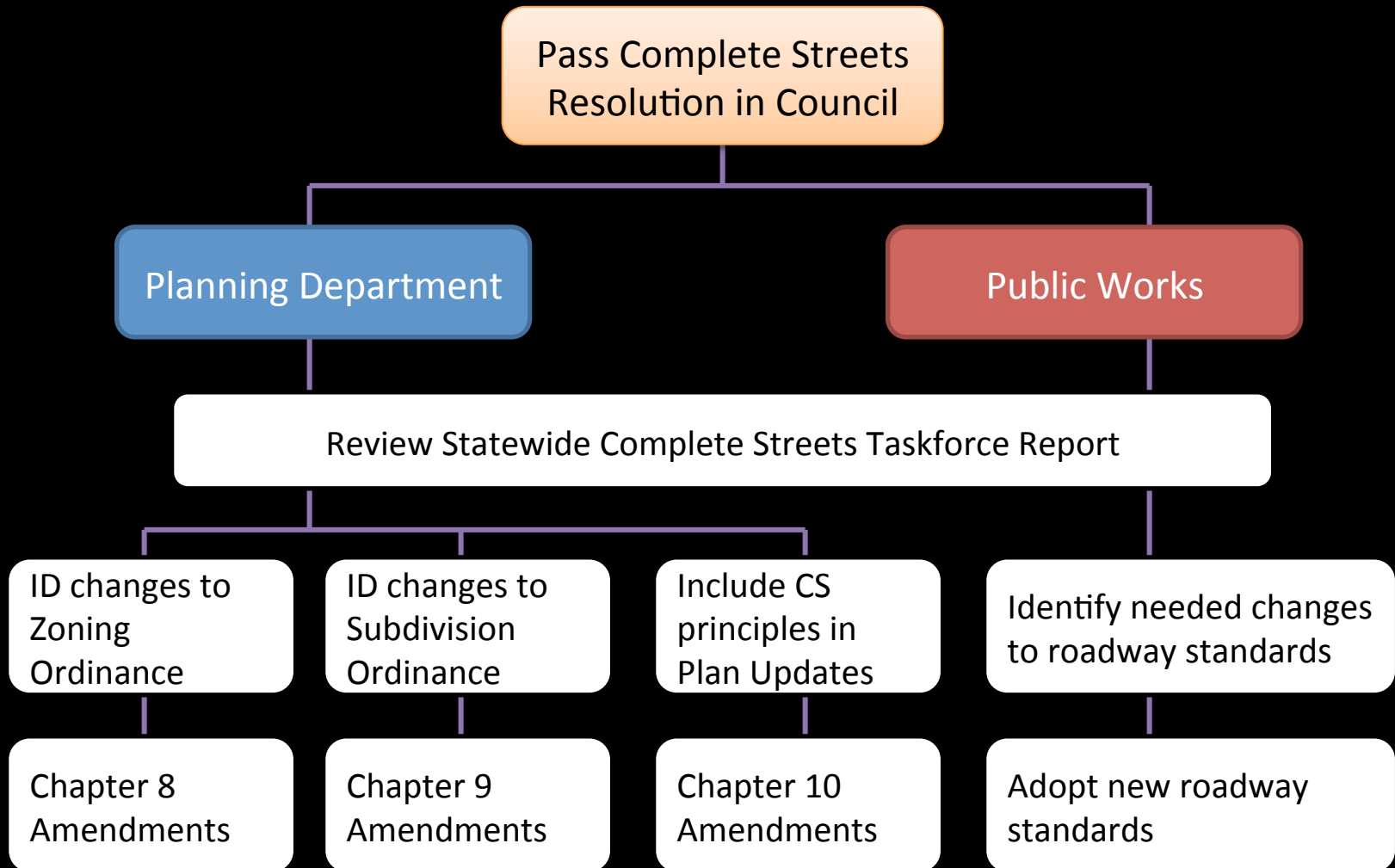




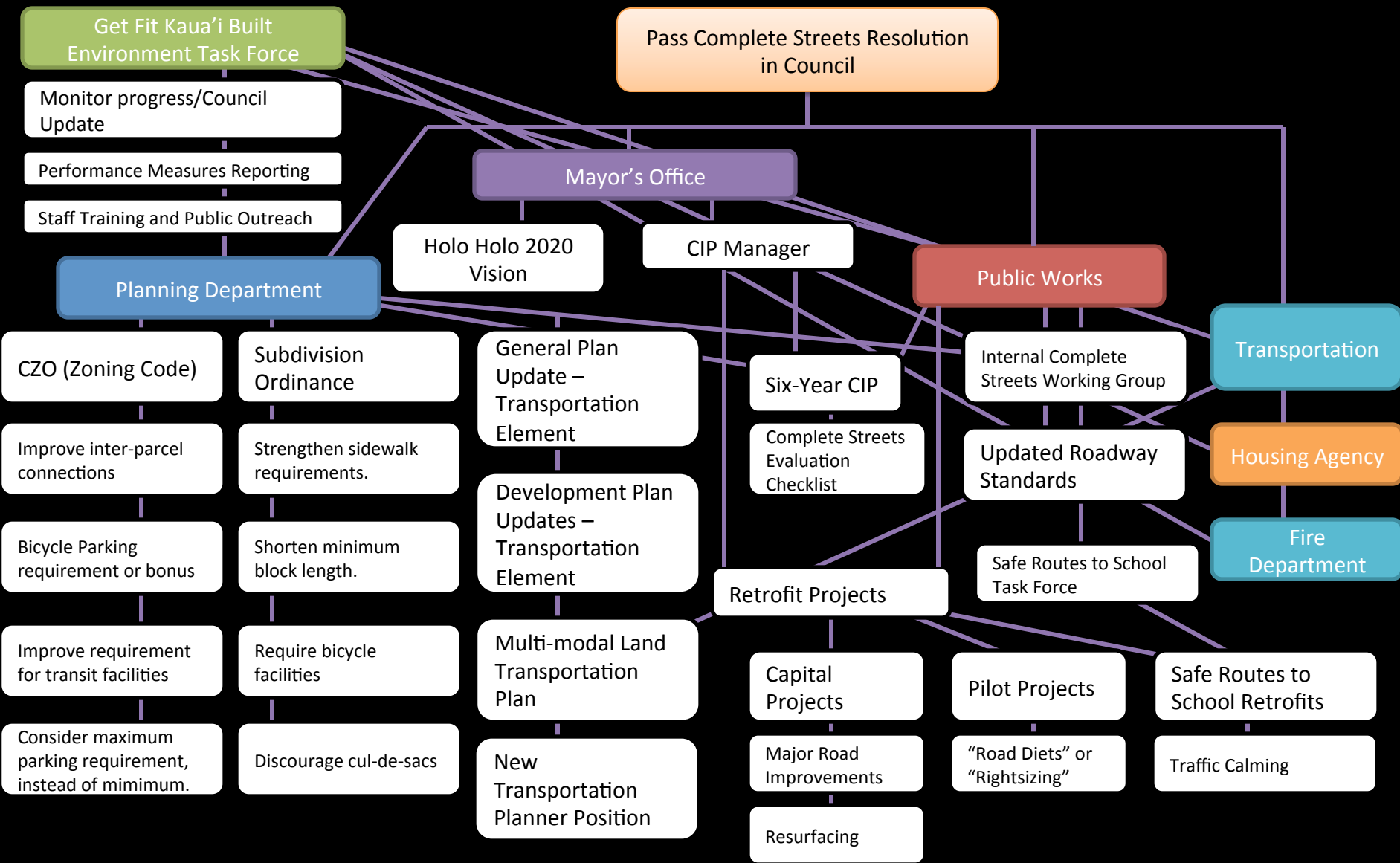
Helped Build Capacity by providing technical assistance from the Nation's BEST!



Internal Action Plan



What Reality Looked Like













Rodney Basconciello

We have a radio DJ (Bev Brody) who powerfully advocated complete streets and talked about it on the radio several times. That's how I learned about the concept. Also it should be mentioned that Hardy Street is a curved street that wraps around Wilcox Elementary School, and the roundabout is near the spot where the school is close to Lihue Public Library, so the area has a lot of foot traffic and school-related traffic.

January 7 at 2:52 AM · Like · 2 · 2

Write a comm... Post



'Complete Streets' done deal

New law will benefit pedestrians, bicyclists on Kauai, but some Hanalei residents wary

Léo Azambuja

THE GARDEN ISLAND

LIHUE — Most parents would agree they want a safe area for their children to ride a bicycle or walk, even if it's just to a bus stop.

A new law signed Wednesday by Mayor Bernard Carvalho, Jr. will ensure just that for future developments in new and existing subdivisions.

"This is an exciting day as we take a big step forward in our efforts to design Kauai's streets with equal consideration given to all users, from pedestrians of all ages and abilities to bicyclists and transit riders, as well as motorists," said the mayor.

The Kauai County Council unanimously approved last Wednesday the Complete Streets bill, which will set guidelines



Dennis Fujimoto/The Garden Island

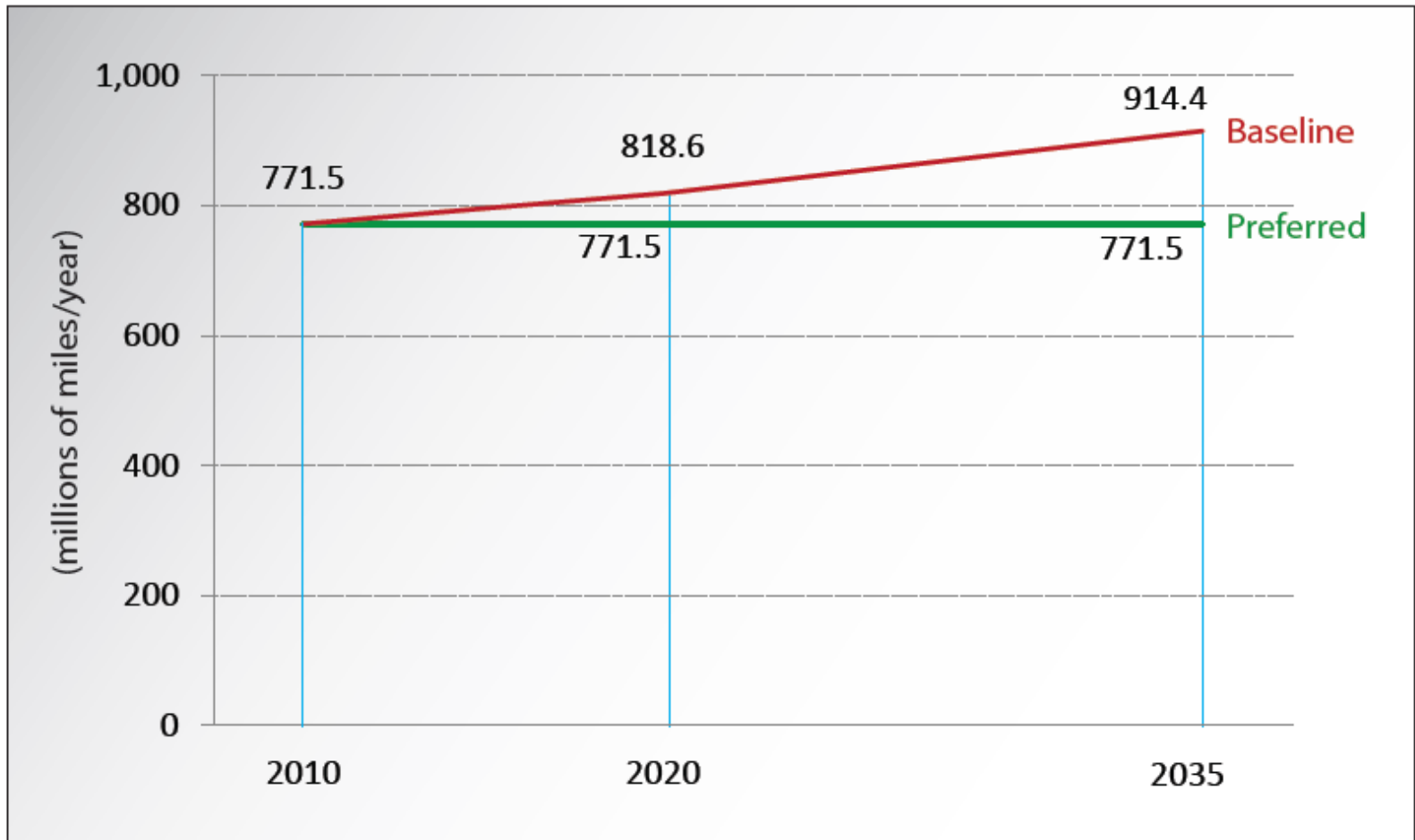
A group of county officials and personnel along with community members enthusiastically applaud as Mayor Bernard Carvalho, Jr. signs the Complete Streets bill. From left: Deputy County Engineer Lyle Tabata; Marisa Valenciano, TVR permit enforcement research specialist; Peter Nakamura, county planner; Kevin Santiago, summer intern; Marie Williams, county planner; Councilwoman JoAnn Yukimura; Neil Clendeninn, Li'hu'e Business Association; Planning Director Michael Dahilig; Lee Steinmetz, transportation planner; Councilman Tim Bynum; Bev Brody, Get Fit Kaua'i director; Ian Jung, deputy county attorney; and Carolyn Larson, Li'hu'e Public Library head librarian.



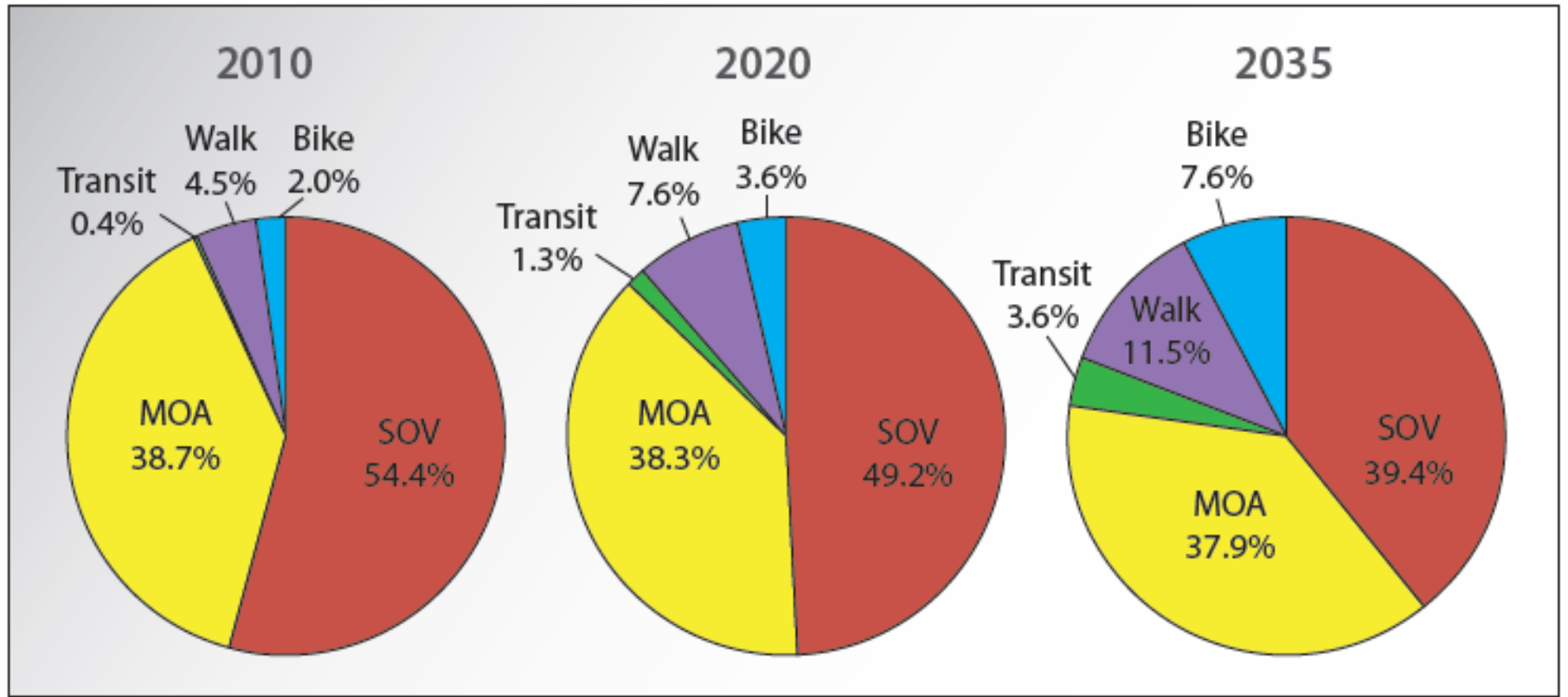
DON'T
STOP
BELIEVING

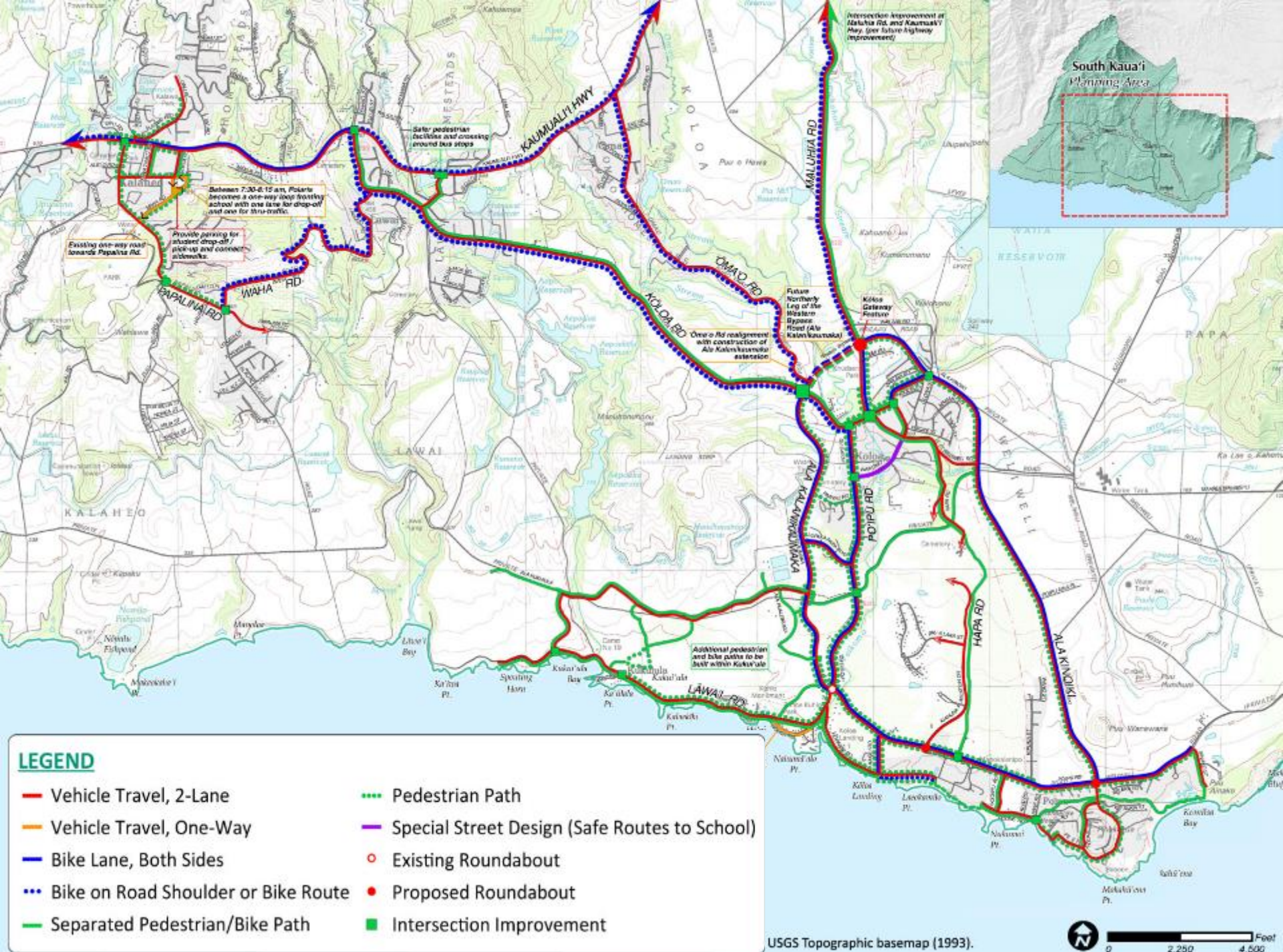
A New Transportation Planning Vision

Annual VMT (Vehicle Miles Traveled)



Preferred Mode Share - All Trips





Between 7:30-8:15 am, Poipu becomes a one-way loop fronting school with one lane for drop-off and one for thru-traffic.

Provide parking for student drop-off/pick-up and corner sidewalks.

Existing one-way road towards Papaia Rd.

Safe pedestrian facilities and crossing around bus stops

Intersection improvement at Maunaloa Rd and Kaula Rd? May see future highway improvement.

Future Northern Leg of the Western Bypass Road (Ale Kala Kaula extension)

Over a Rd realignment with construction of Ale Kala Kaula extension

Additional pedestrian and bike paths to be built within Kaula

LEGEND

- Vehicle Travel, 2-Lane
- Vehicle Travel, One-Way
- Bike Lane, Both Sides
- - - Bike on Road Shoulder or Bike Route
- Separated Pedestrian/Bike Path
- - - Pedestrian Path
- Special Street Design (Safe Routes to School)
- Existing Roundabout
- Proposed Roundabout
- Intersection Improvement

T4 VC



T4 Village Center

Intent

To integrate main-street commercial and retail environments into neighborhoods, providing access to day-to-day amenities within walking distance, creating potential for a transit stop, and serving as a focal point for the neighborhood.

Desired Form

Attached or detached low rise form, located close to or at the street edge.

Building Height

3 stories max.

General Use

Residential, with limited Retail, and some Civic/Open Space and Service Uses

Parking

Low Parking Requirements to promote walkability, Commercial Parking Districts with off-street residential parking.

Shared or Individual Parking Lots, On-Street Parking

Roadway Characteristics

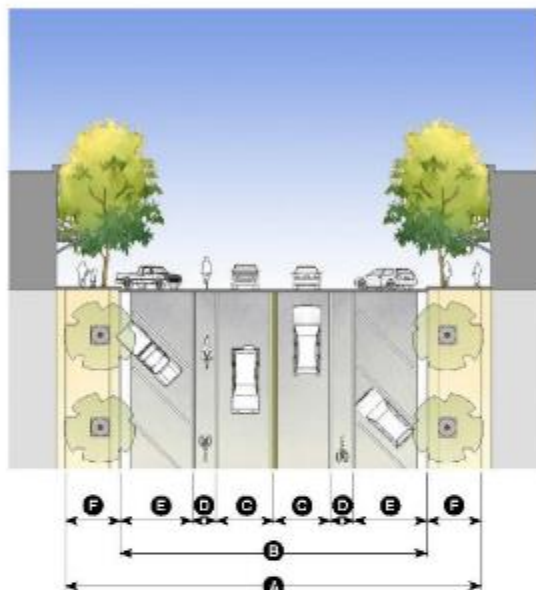
Narrow to moderate travel lanes, with structured drainage and narrow planting strips or tree wells

Bicycle facilities typically on-street in Class II or III lane.

Wide Sidewalks



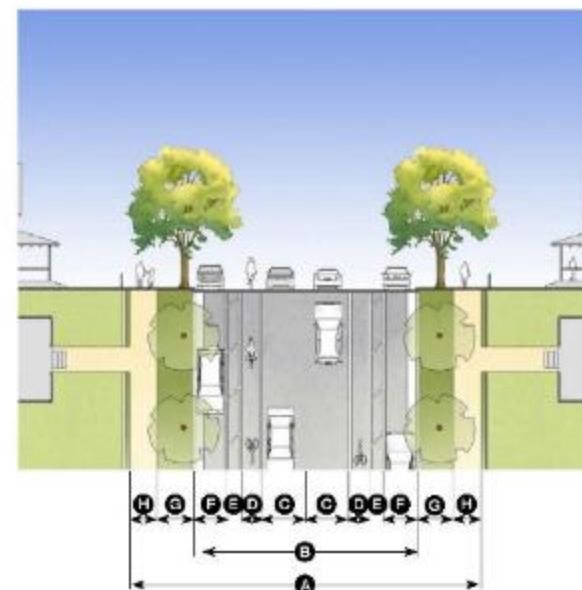
Table 5.3.090.A Thoroughfare Assembly CS-98-82-BL



Application	
Transect Zones	T3E T3VN T4V T4VC T5TC
Movement Type	Slow
Design Speed	20 mph
Overall Widths	
Right-of-Way (ROW) Width	98' (A)
Pavement Width	82' (B)
Lane Assembly	
Traffic Lanes	2 @ 10' (C)
Bicycle Lanes	2 @ 5' (D)
Parking Lanes	2 @ 16', marked (E) Back in at 45 degrees
Medians	None
Key	
T#	By Right
T#	By Director
T#	Not Allowed

Public Frontage Assembly	
Frontage Type	Commercial Street
Drainage Collection Type	Curb and Gutter
Planter Type	4'x4' Tree Well, setback 2' from curb
Landscape Type	Trees at 40' o.c. avg.
Lighting Type	Post or Column
Walkway Type	14' sidewalk (F)
Curb Type	Square

Table 5.3.090.A Thoroughfare Assembly ST-72-48-BL



Application	
Transect Zones	T3E T3VN T4V T4VC T5TC
Movement Type	Low
Design Speed	30 mph
Overall Widths	
Right-of-Way (ROW) Width	72' (A)
Pavement Width	48' (B)
Lane Assembly	
Traffic Lanes	2 @ 10' (C)
Bicycle Lanes	2 @ 4' (D)
Buffer	2 @ 3' (E)
Parking Lanes	2 @ 7', marked (F)
Medians	None
Key	
T#	By Right
T#	By Director
T#	Not Allowed

Public Frontage Assembly	
Frontage Type	Street
Drainage Collection Type	Curb and gutter
Planter Type	5' continuous planter (G)
Landscape Type	Trees at 40' o.c. avg.
Lighting Type	Pipe, Post or Column
Walkway Type	8' sidewalk (H)
Curb Type	Square



Photos: Dennis Fujimoto, The Garden Island

TUESDAY
October 27, 2015

tgi

THE GARDEN ISLAND



GENERAL CONTRACTOR
Kauai's Owned & Operated
(808) 639-8776 • nathanwoodgc.com | info@nathanwoodgc.com
U.S. General Contractor (BC-21020) • U.S. Electrical Contractor (BC-21020)
Lic. Electrical Engineer (PE-19970) • U.S. Sales Contractor (BC-21020)

LOCAL, A4

SENIOR CHECKS STAND PAT

75¢
Serving Kauai
and Niihau since 1902

'HISTORIC DAY FOR KAUAI'

County awarded \$13M grant for Lihue revitalization

THE GARDEN ISLAND

LIHUE — Kauai County learned Monday it landed \$13 million in grant funding from the U.S. Department of Transportation. The funds will be used for the revitalization of the Lihue Town Core.

"This is a historic day for Kauai," said Mayor Bernard

Carvalho, Jr. "It all started with a community vision and everyone working together."

Many projects will be covered by the Transportation Investment Generating Economic Recovery grant. They include the addition of pedestrian and bike lanes on Rice Street, a shared-use path from the Lihue Civic

Center to the Kauai War Memorial Convention Hall and bicycle and pedestrian improvements on Hoolako Street.

In addition, the conversion of Ewa Street to a

transit hub will be completed, sidewalks will be installed on Hoala and Kalena streets, a bicycle boulevard will be added to Pualole and



Carvalho

Malae streets, and transit services for the Lihue Civic Center will be expanded.

Pat Griffin, president of the Lihue Business Association, called the grant announcement great news. She said LBA will "assist in any way we can to make these funds pay huge dividends for the people of Kauai in the future."

"Lihue is aptly called the Heart of Kauai," she wrote in a letter of support for the grant application. "It is the county

seat and home to the island's airport, primary harbor, only institute of higher education, major hospital and commercial center. LBA is dedicated to creating a more prosperous and sustainable future for the Lihue District — economically, socially, culturally and environmentally."

Hawaii's congressional leaders voiced their support too.

"Securing this competitive grant was not easy," wrote U.S. Sen. Brian Schatz. "This

is the first time our state has received a TIGER grant in four years, and we could not have done it without the support of Mayor Carvalho."

In a congratulatory message, U.S. Sen. Mazie Hirono said, "The TIGER grant program is highly competitive, so this award is a testament to the county administration's depth of vision for Kauai's future."

SEE HISTORIC, A5

briefly

Couponing lessons offered tonight

LIHUE — Chelsea Bradley has discovered how to save an average of half off her grocery bill every time she goes shopping. Tonight, she'll host



Processed meats linked to cancer

KAUAI

KAUA'I COUNTY GENERAL PLAN

KĀKŌU

The letter 'O' in 'KĀKŌU' is replaced by a circular graphic. Inside the circle, three silhouettes of people are shown in a traditional Hawaiian canoe (wa'a), paddling on water. Below the canoe, there is a small icon of a document with lines of text, representing a plan or document.