

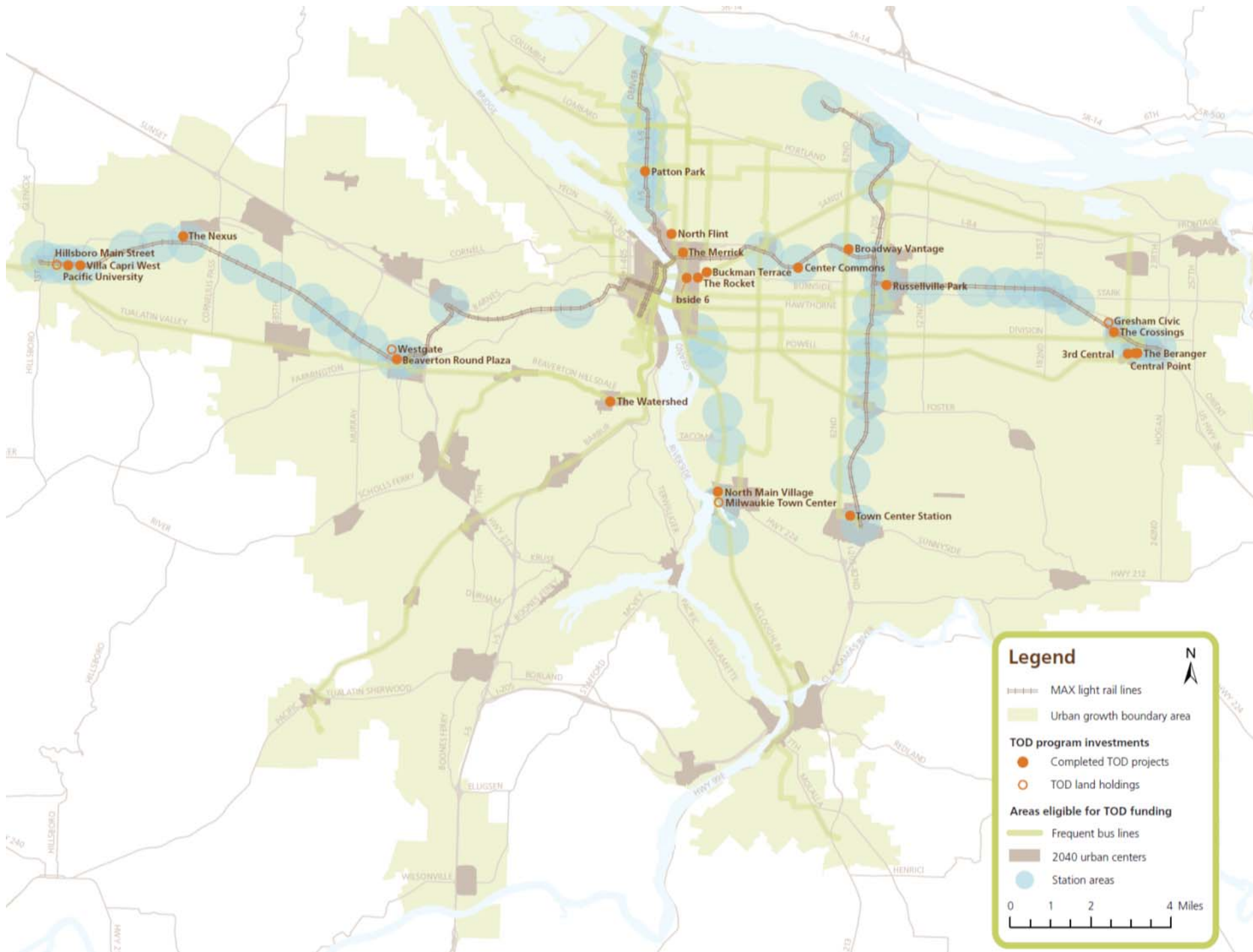
TOD Strategic Plan: overview

TOD & Centers Implementation Program

Metro's Development Center

- Program created in 1998
- \$2.9 mill annual budget
- Directly implementing 2040 through public-private partnerships
- Investments in “bricks and mortar” tied to transportation outcomes
- > 500,000 induced annual transit trips
- \$30 mill has leveraged > \$300 mill private investment





program results

2,091 housing units

nearly 1,000 affordable units

and more than 300 senior units

20 built projects
(10 in pre-development)

2008 National APA
Best Practices Award

Nearly 250,000 sq ft commercial

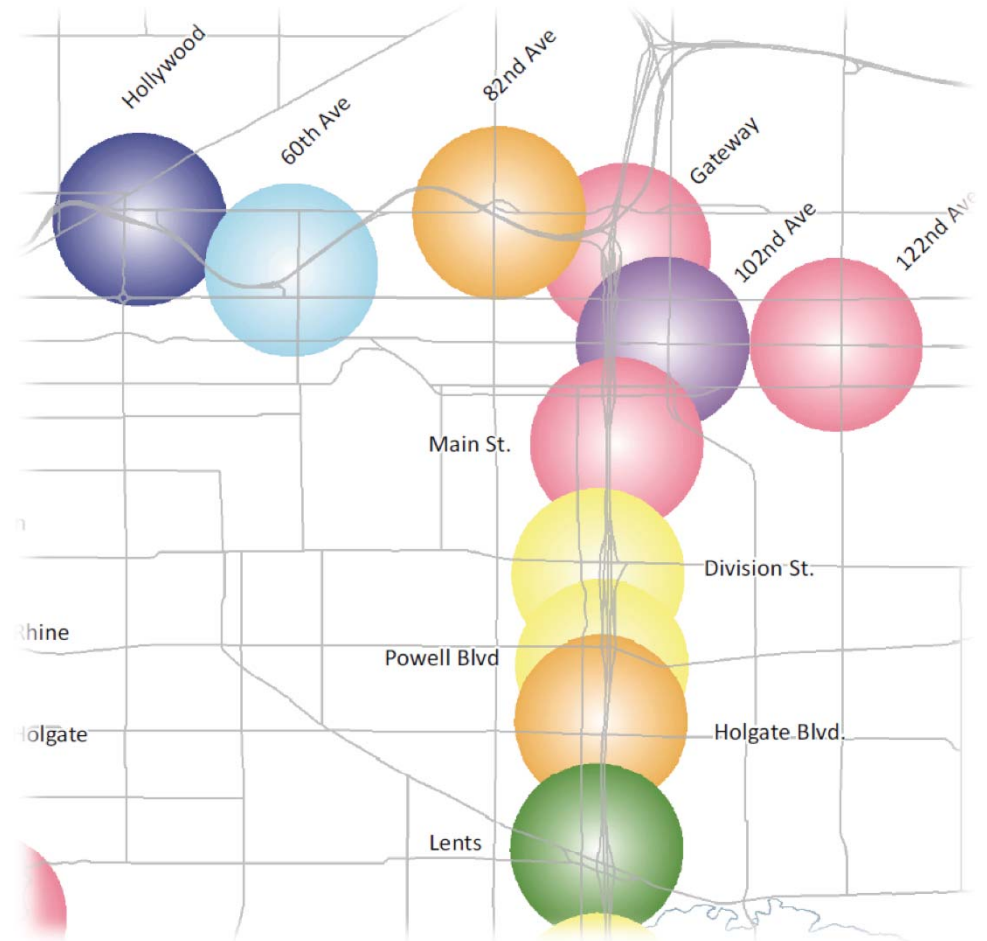
> 100,000 tons of GHG
reduced

543,000 Induced
Transit Riders Per
Year

\$318 million in
private investment

why a strategic plan?

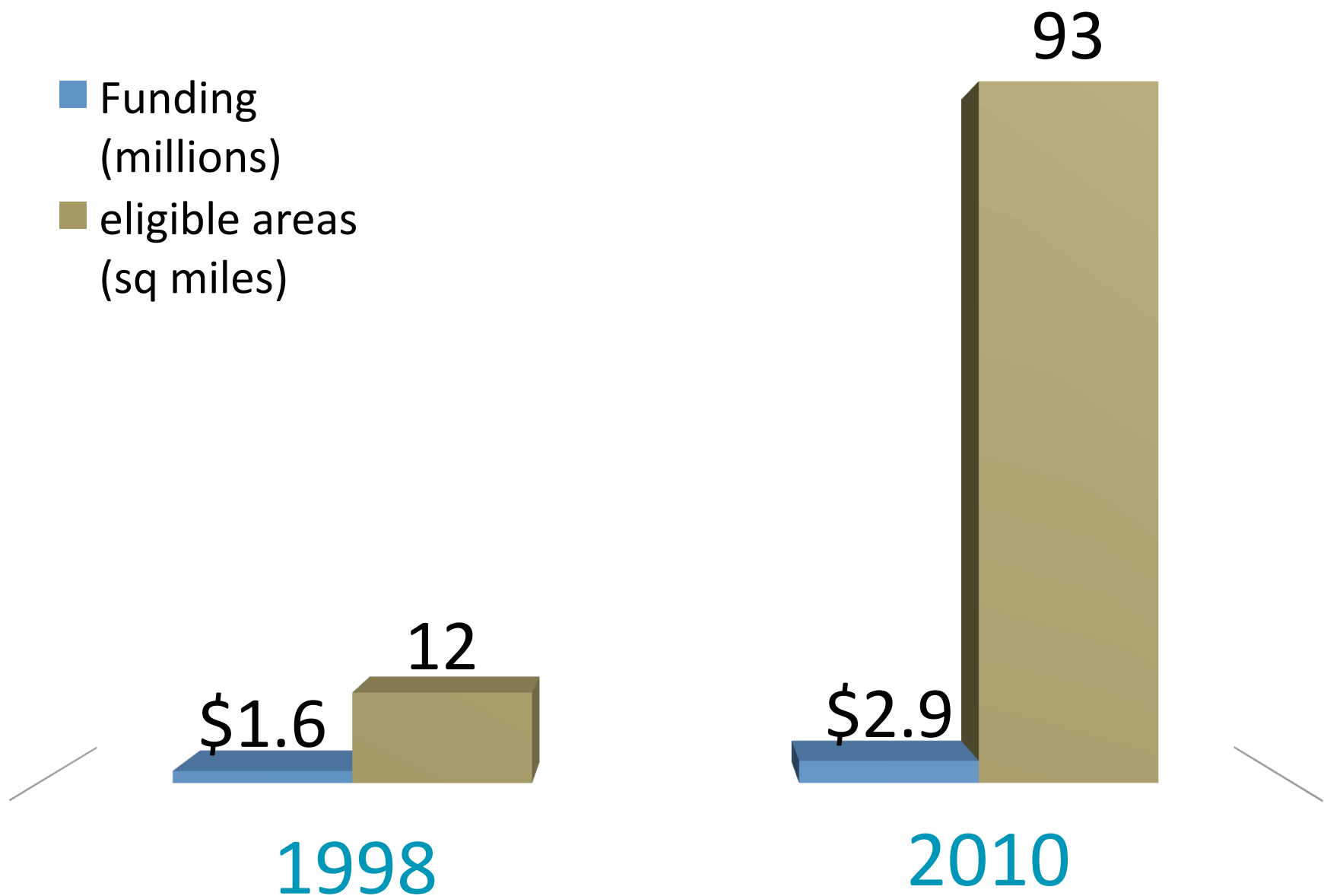
- Expanding system = expanding eligibility
- Differentiate areas by measuring TOD readiness
- Target TOD investments



TOD Program Funding & Eligible Areas

1998-2010

- Funding
(millions)
- eligible areas
(sq miles)

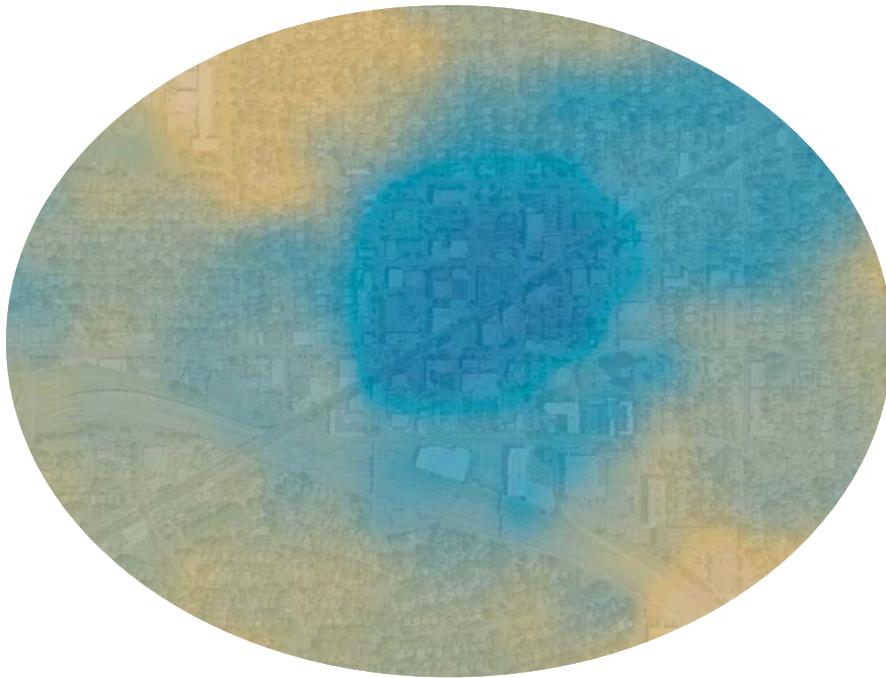


building a TOD typology

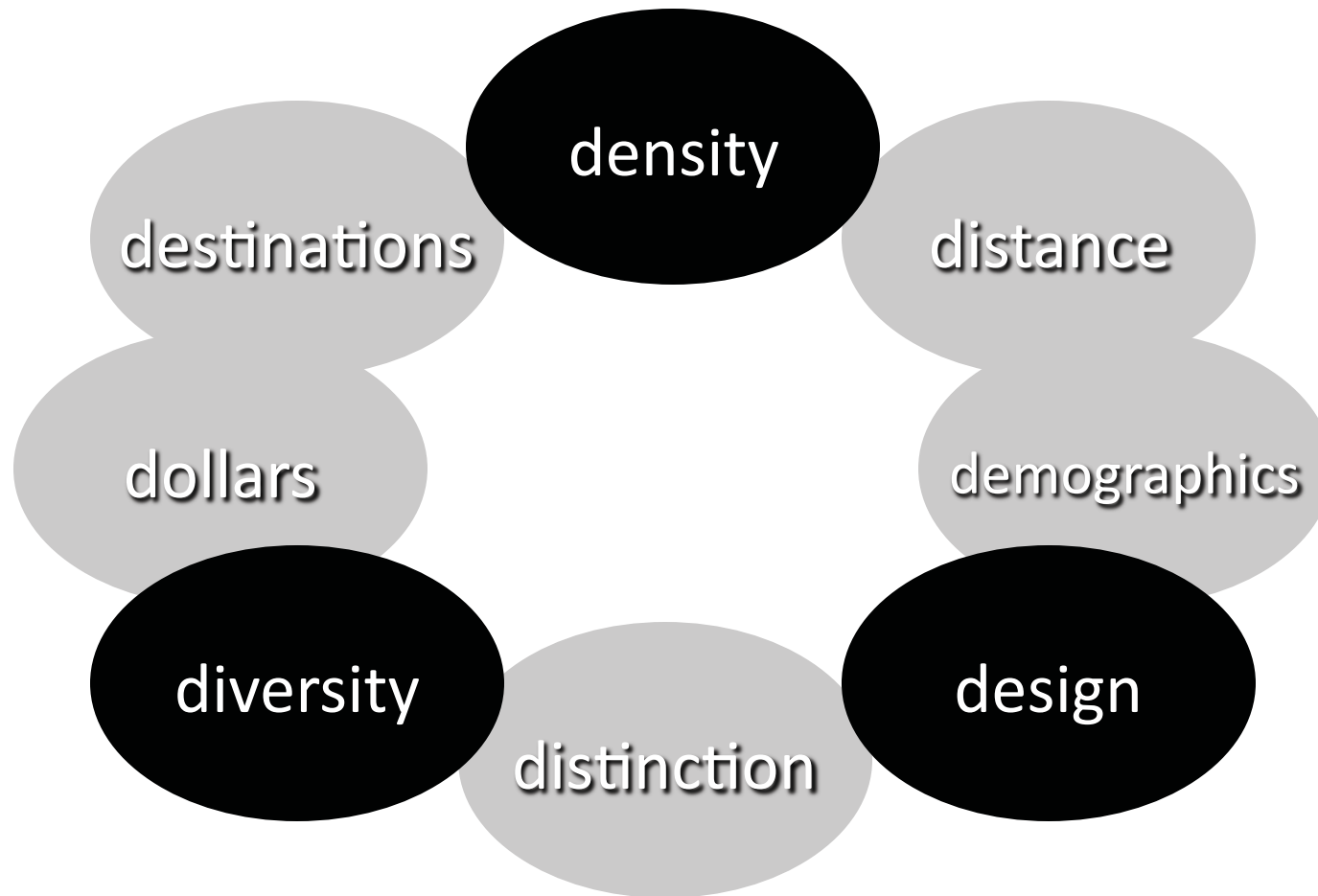
Transit Orientation
Score
(Urban Form + Activity)



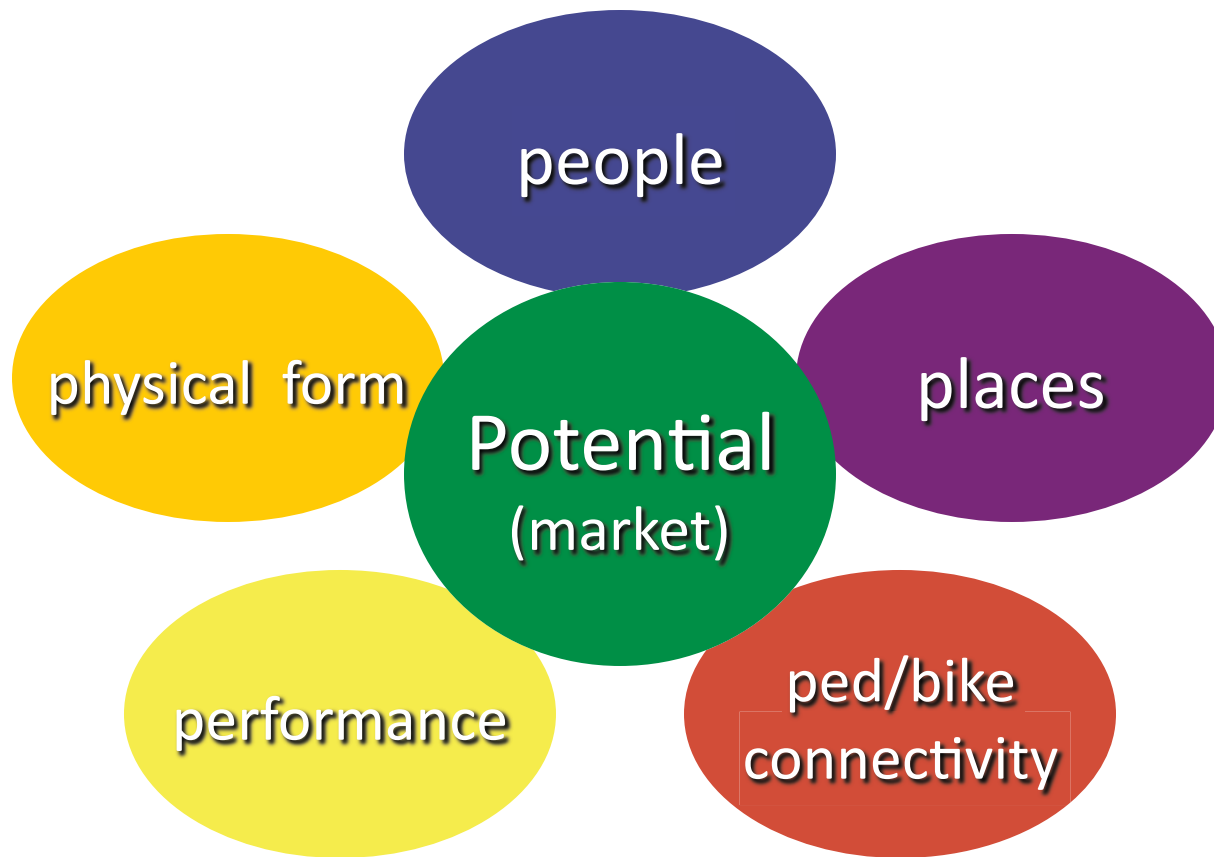
Market
Strength



The traditional trinity of TOD

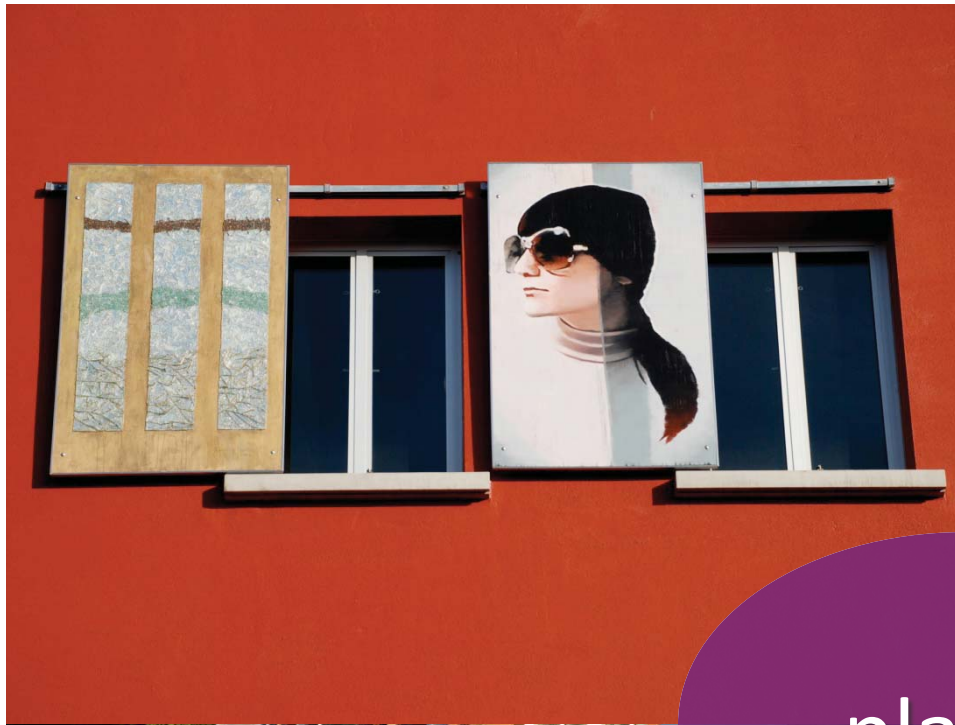


measuring TOD readiness (p's)





people



places



ped/bike
connectivity



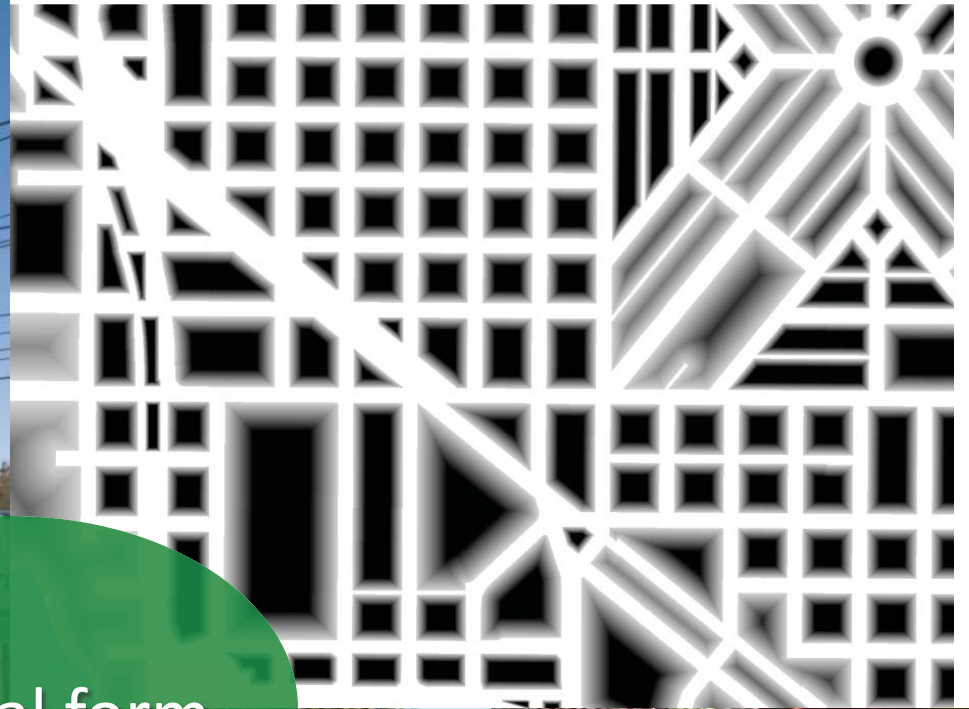
3/3/11



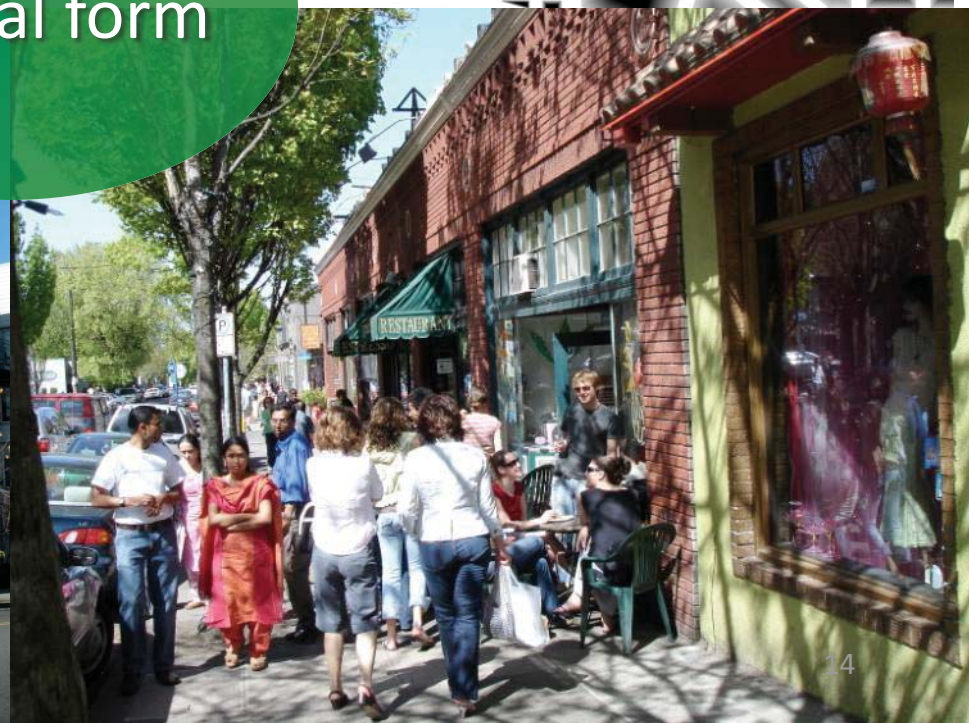
12

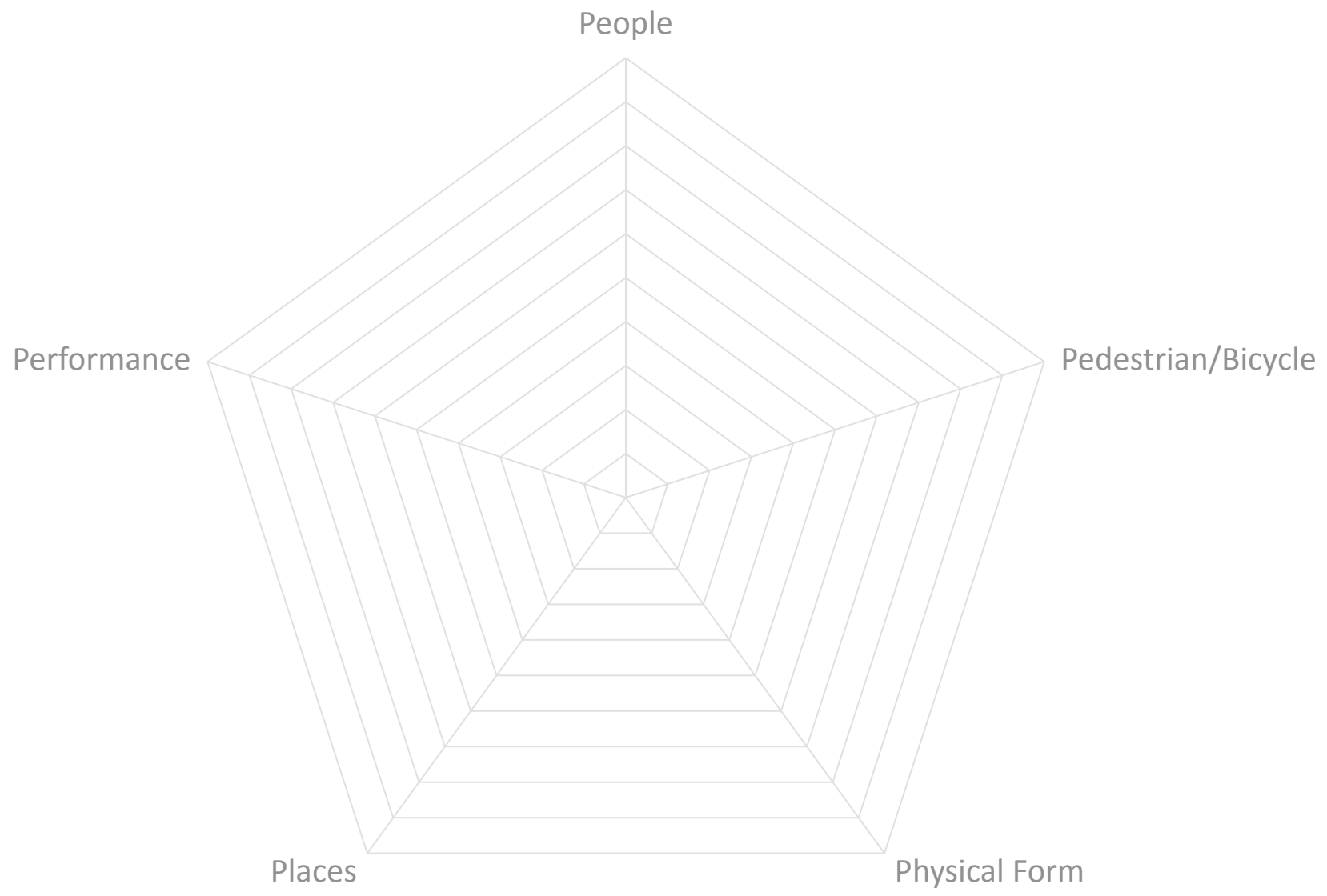


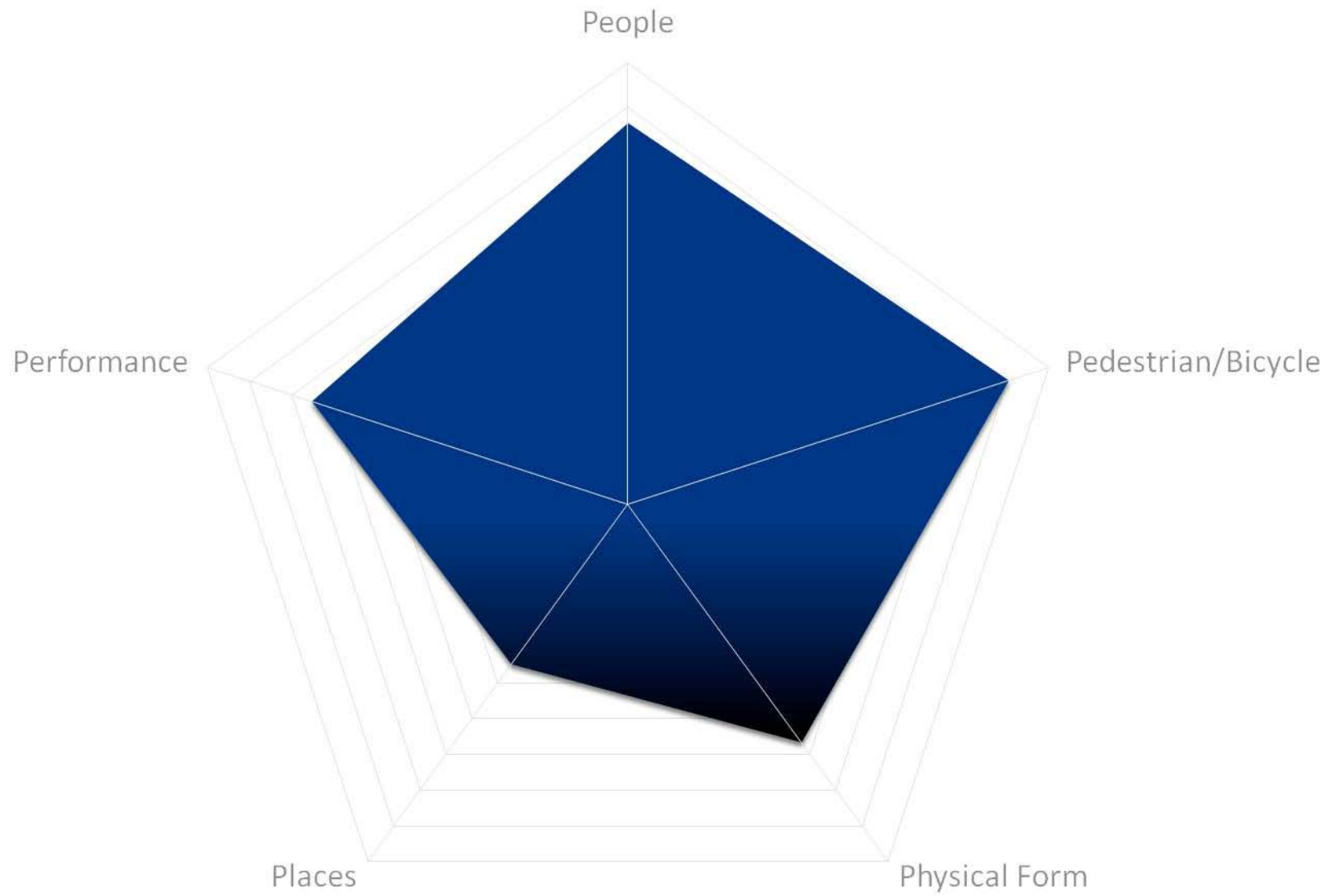
performance



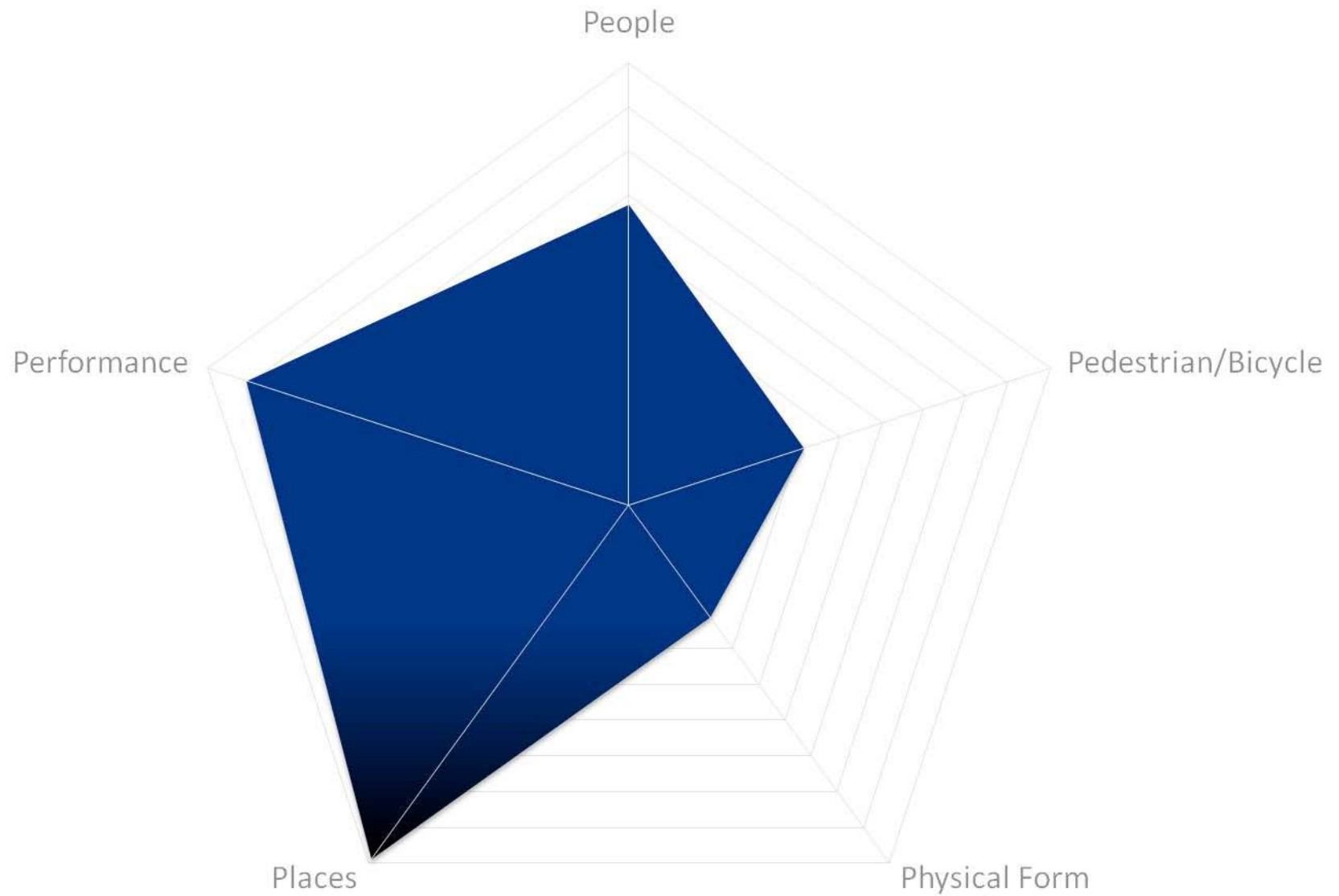
physical form



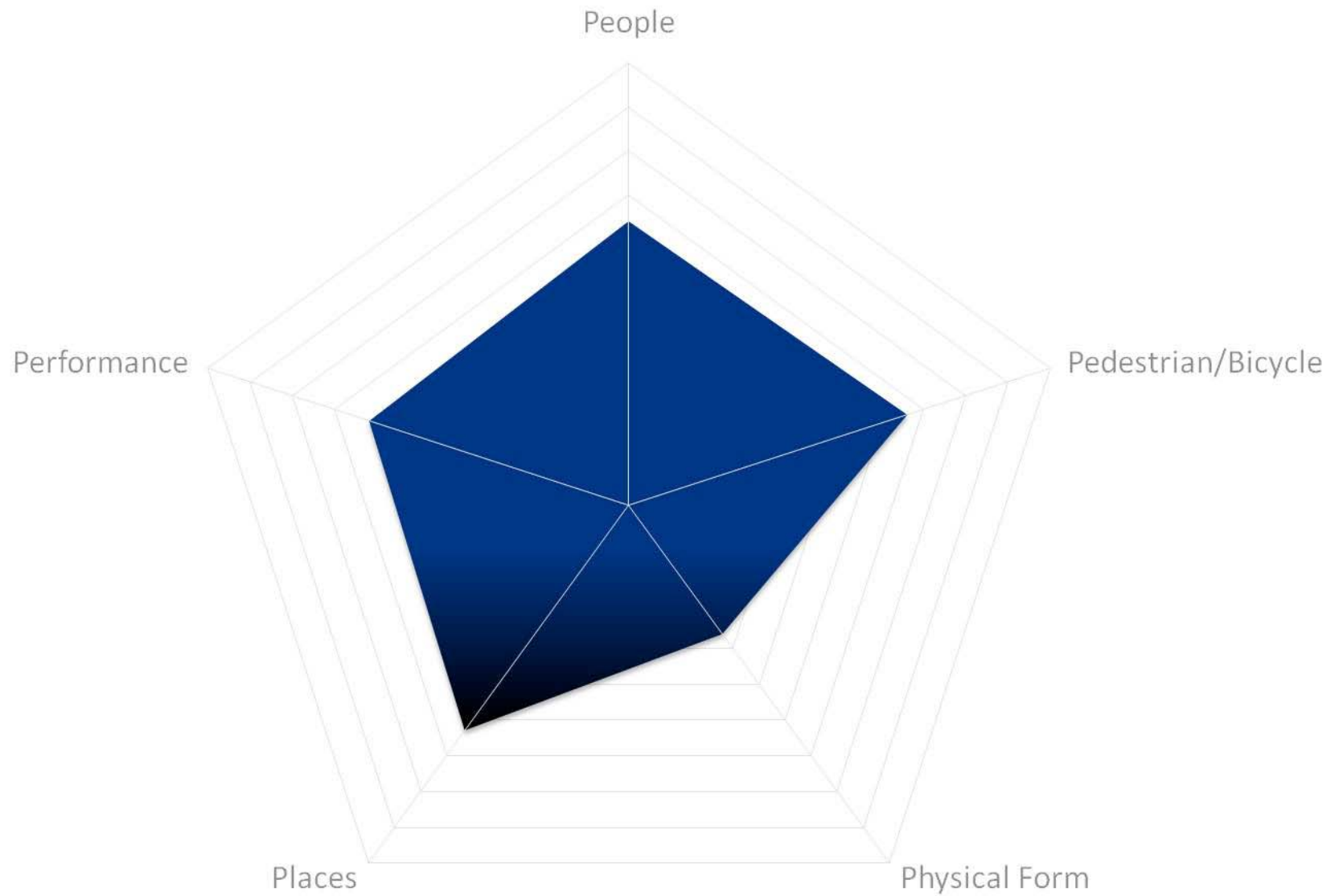




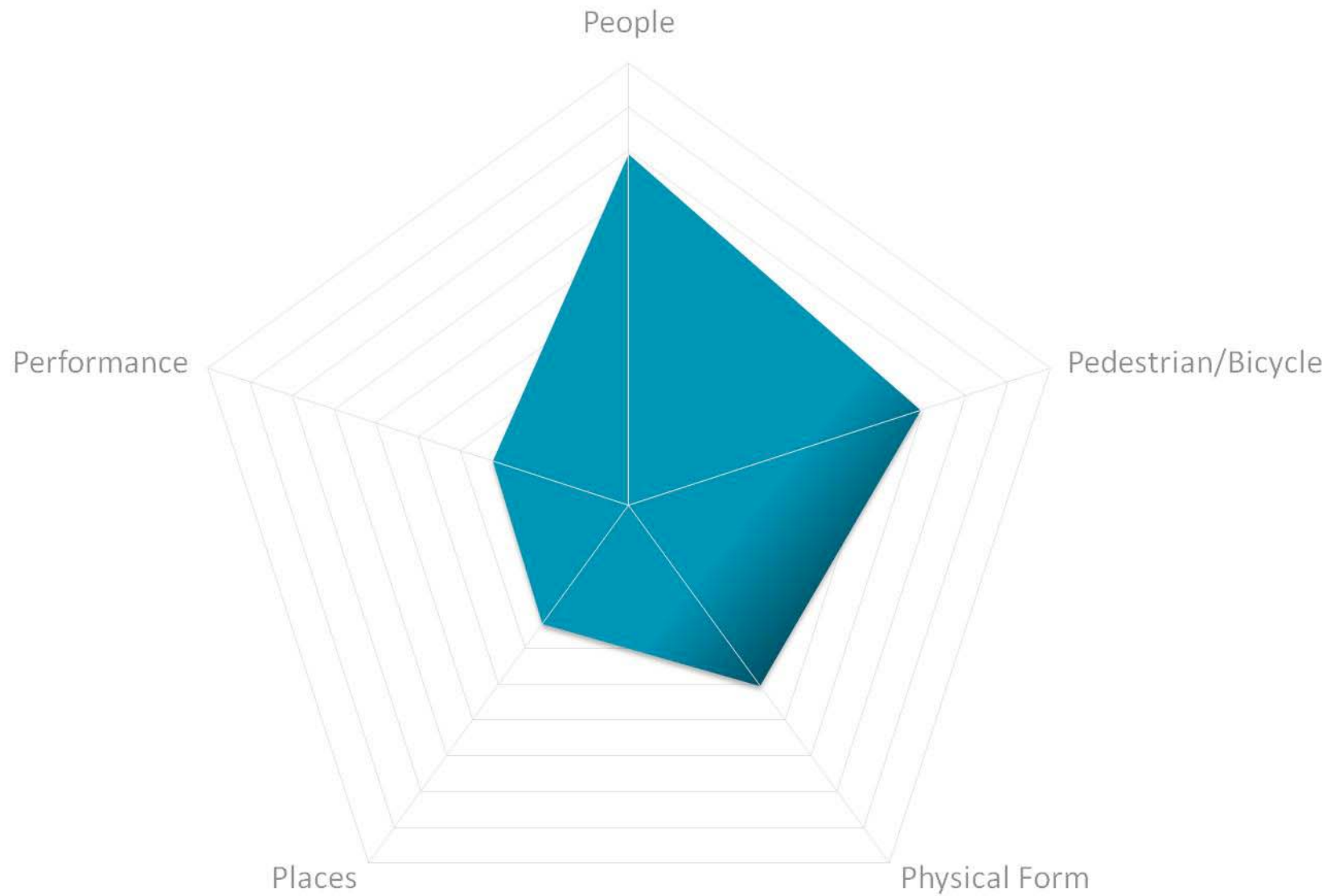
Hollywood



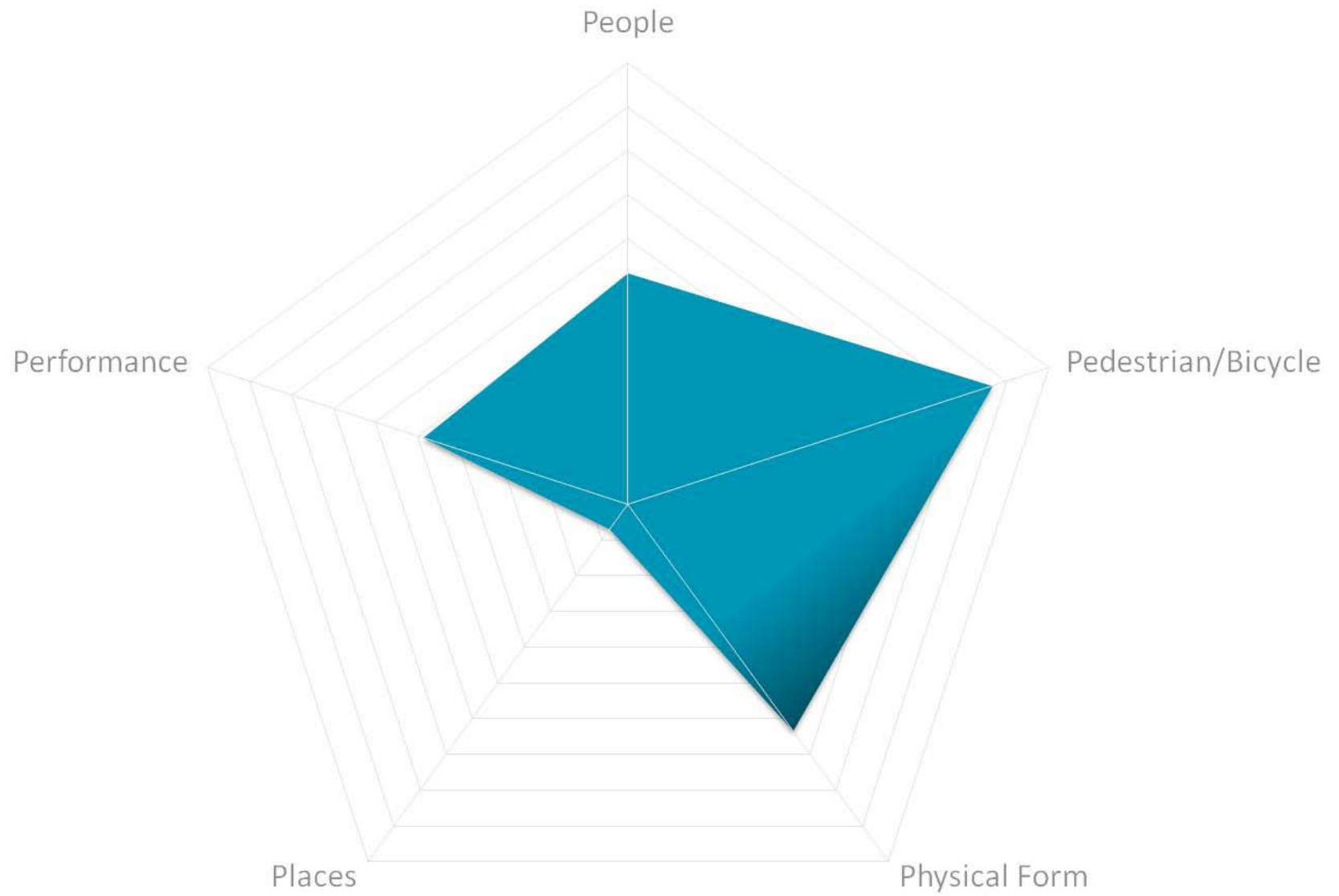
Beaverton Central



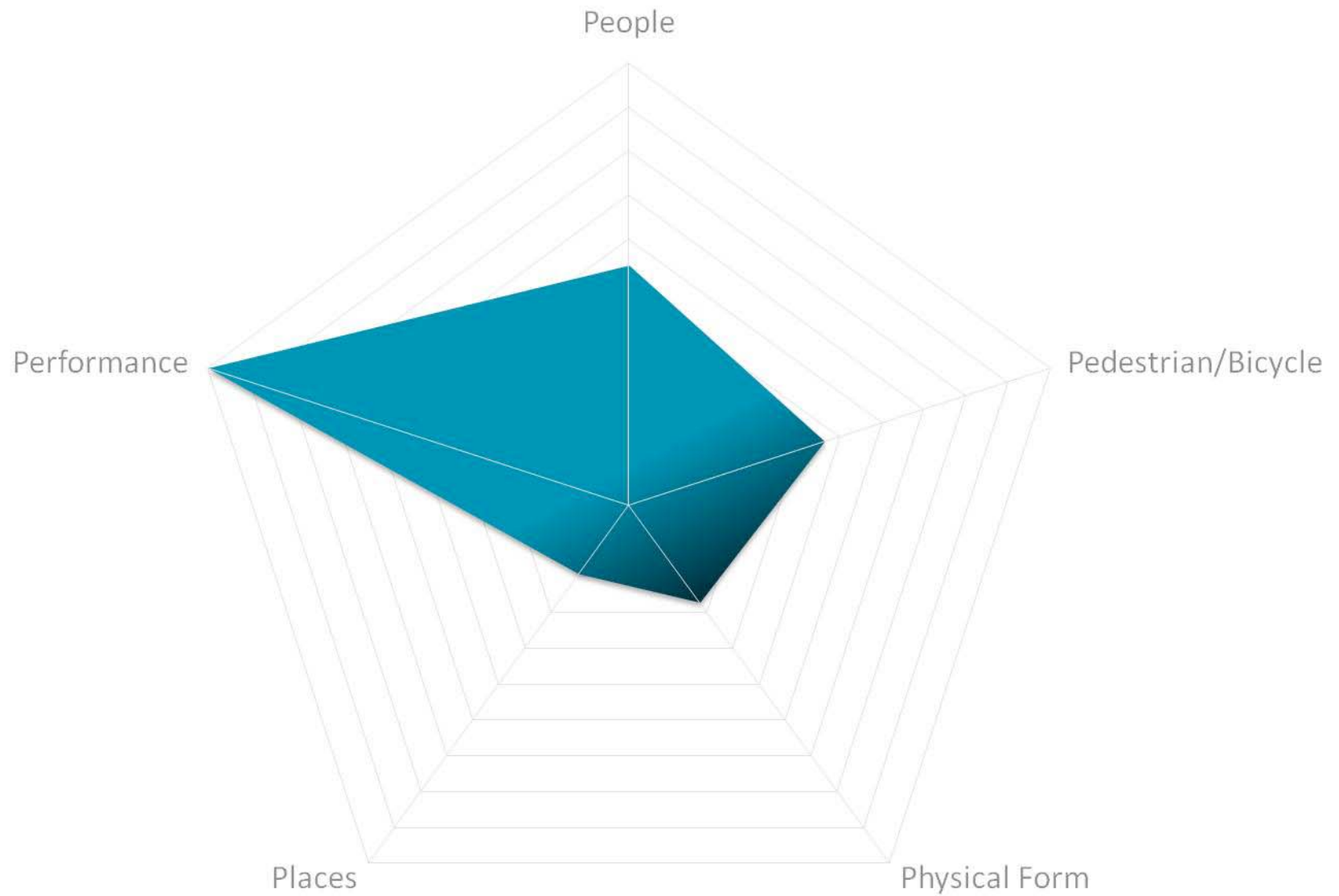
Gresham Central



Hillsboro Central



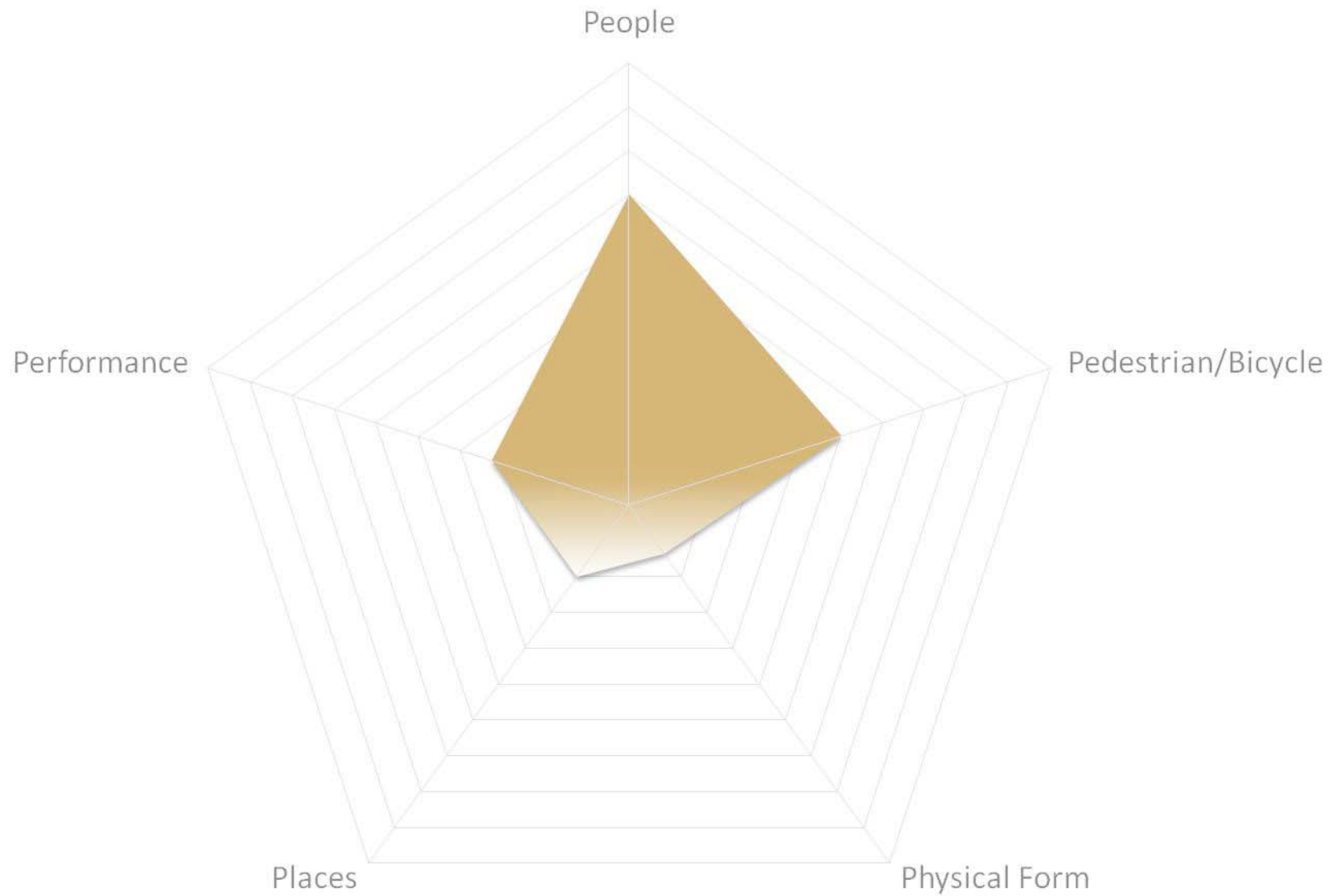
Lents



Gateway

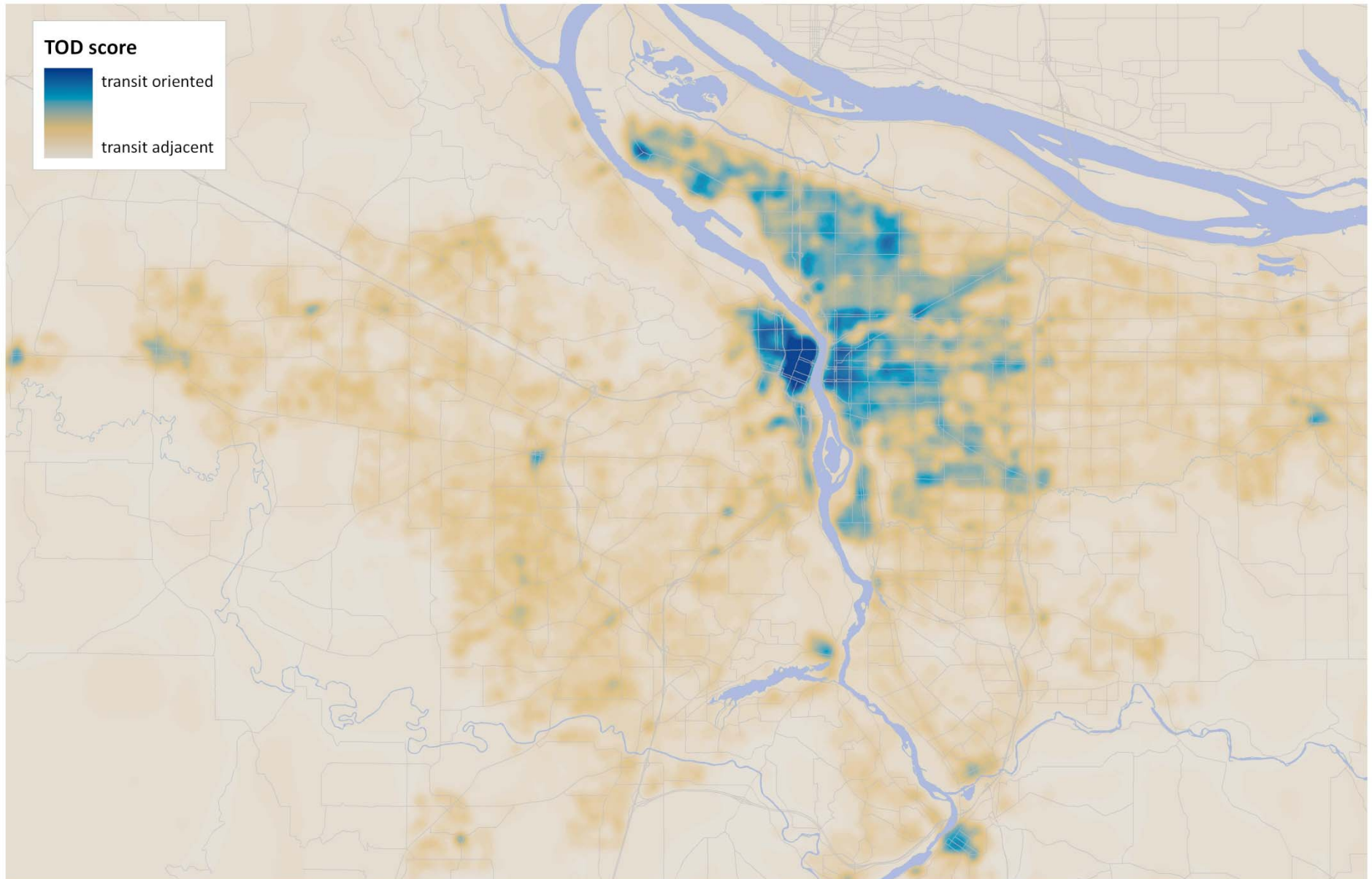


Clackamas

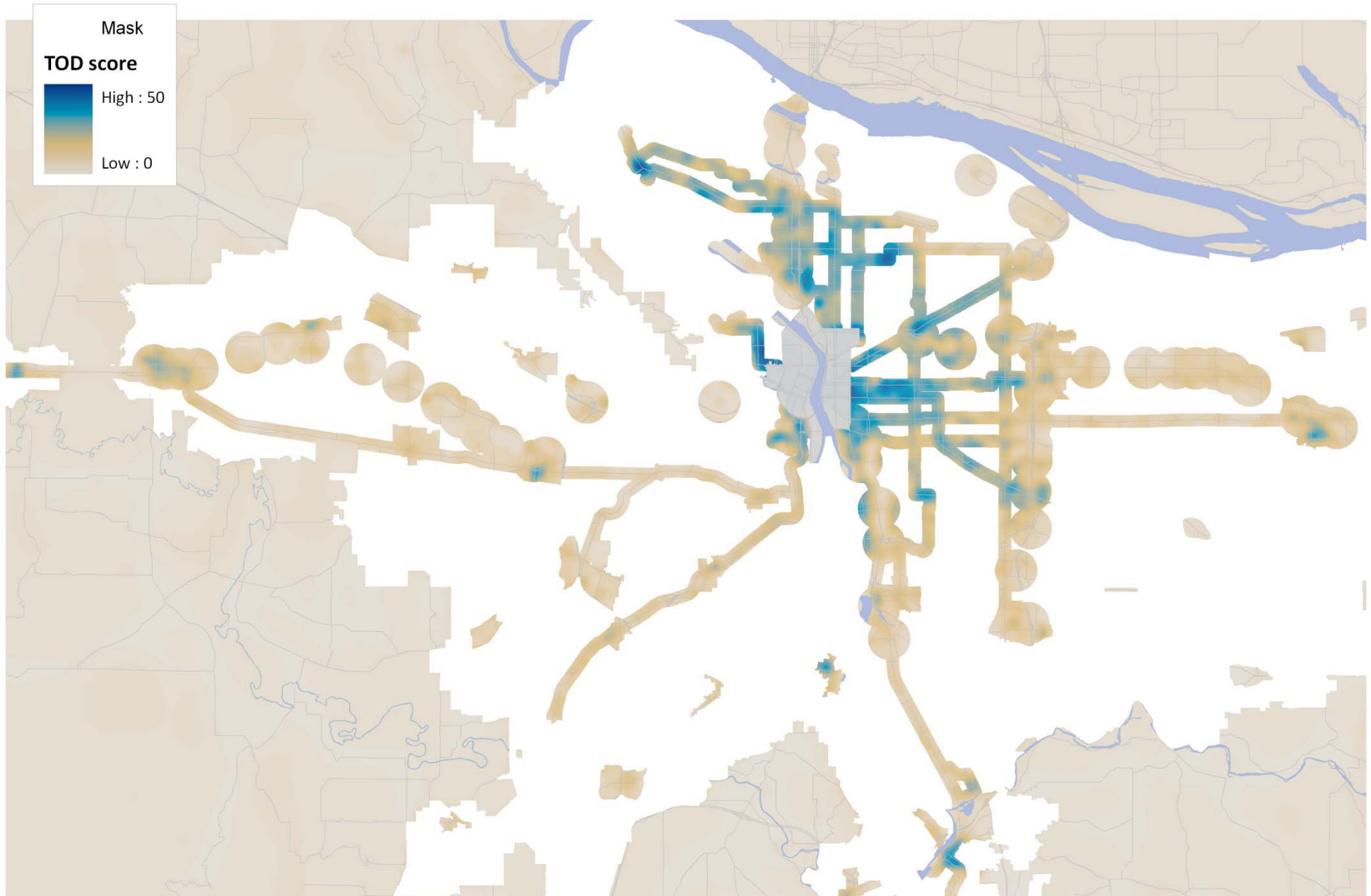


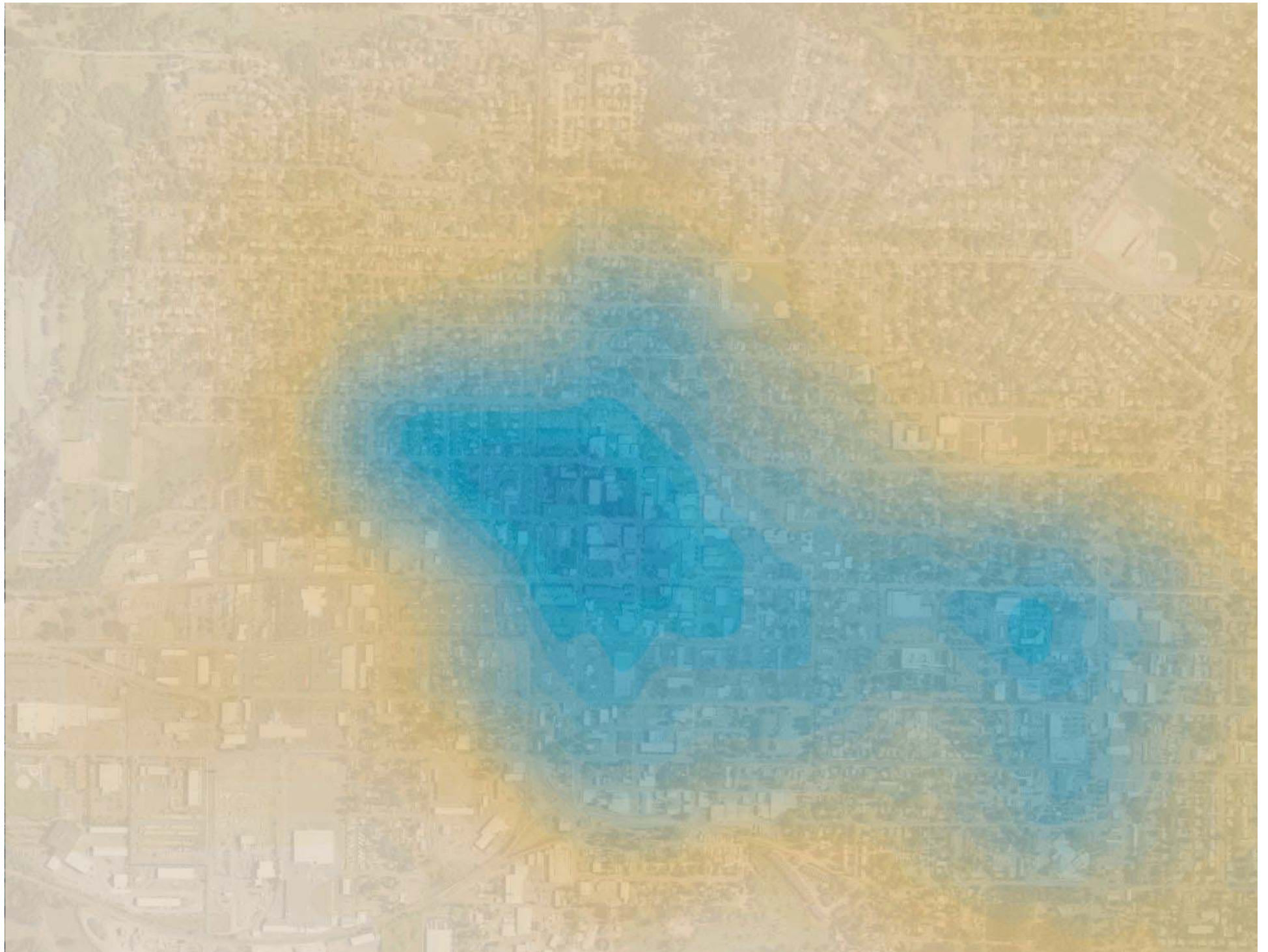
Rockwood

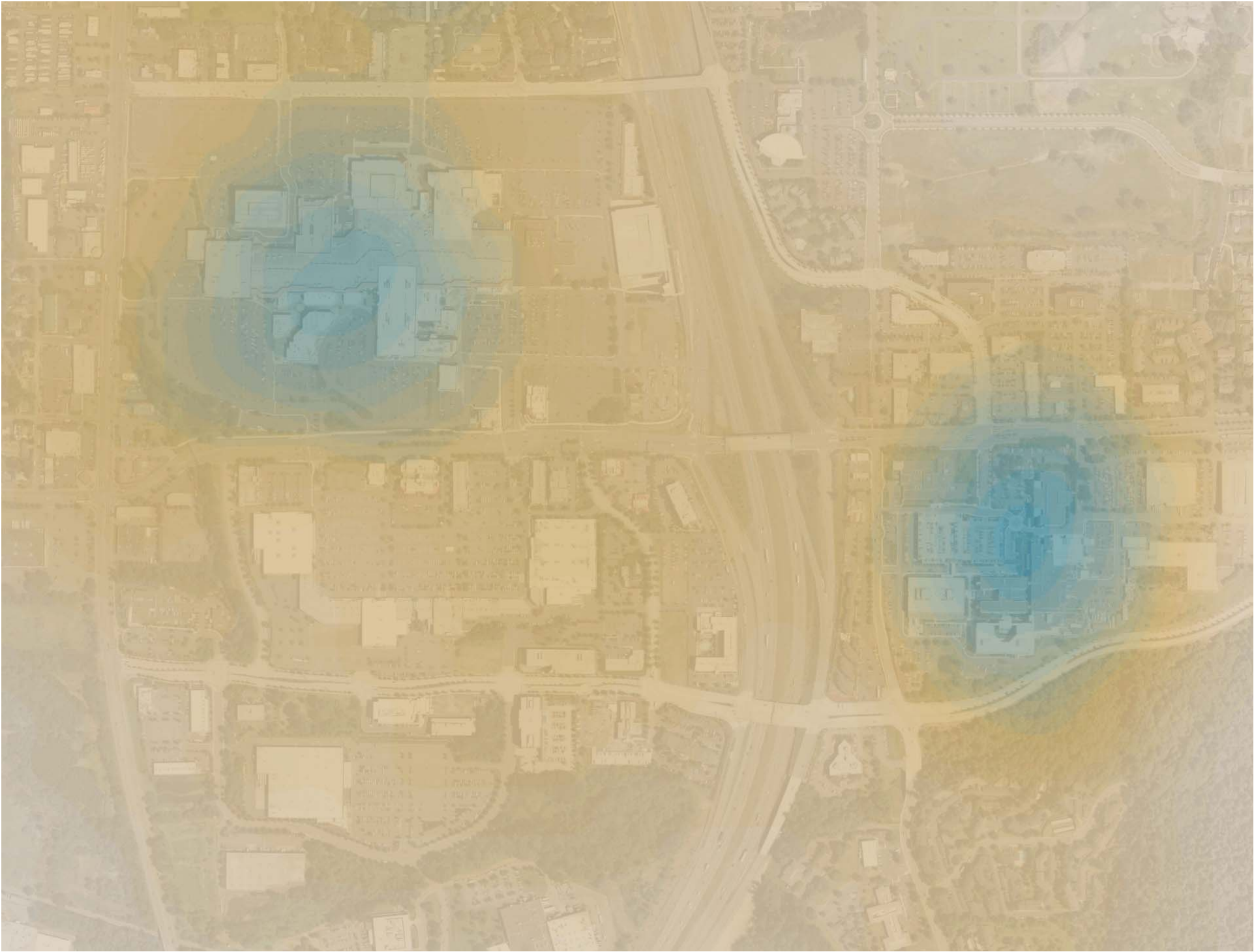
transit orientation score

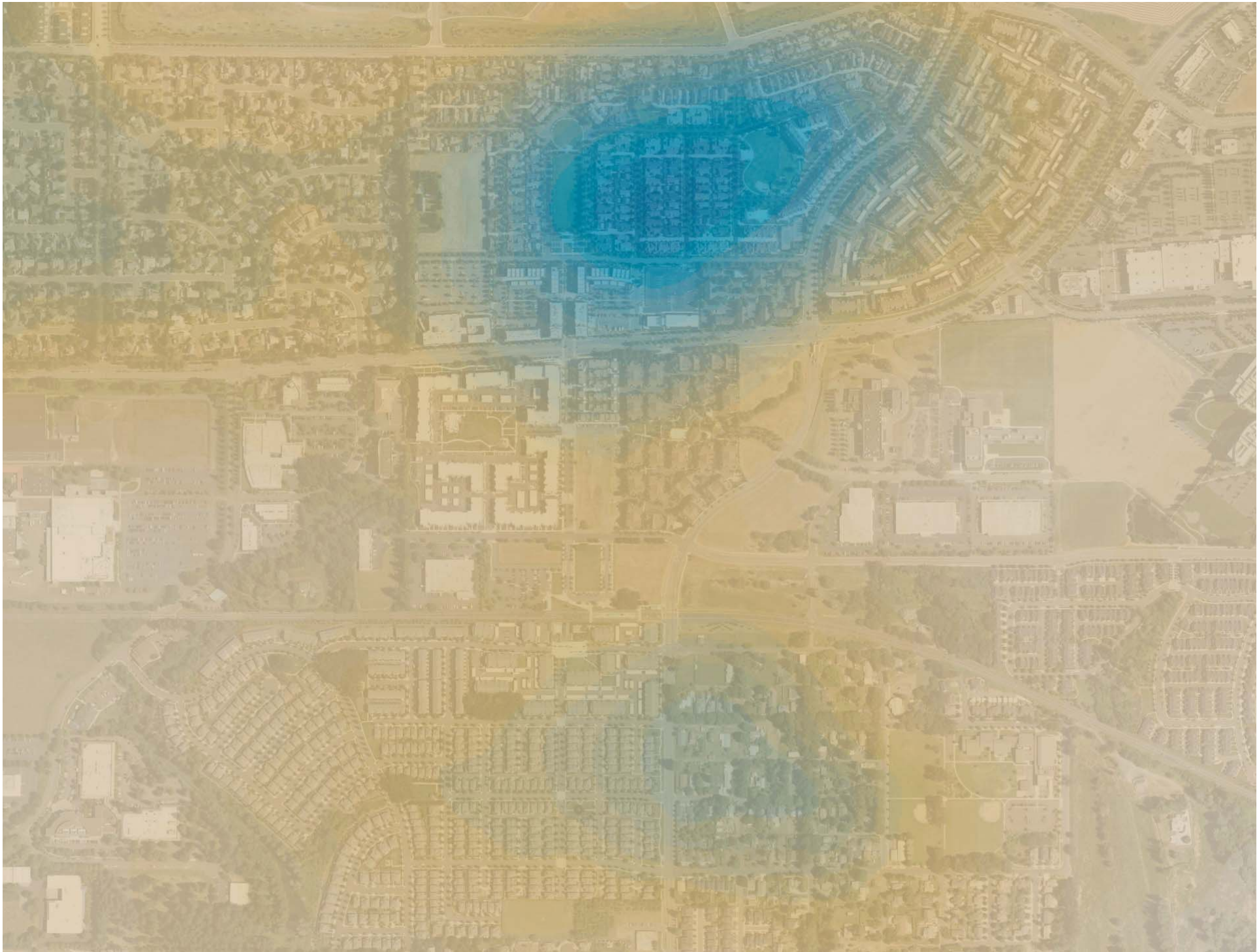


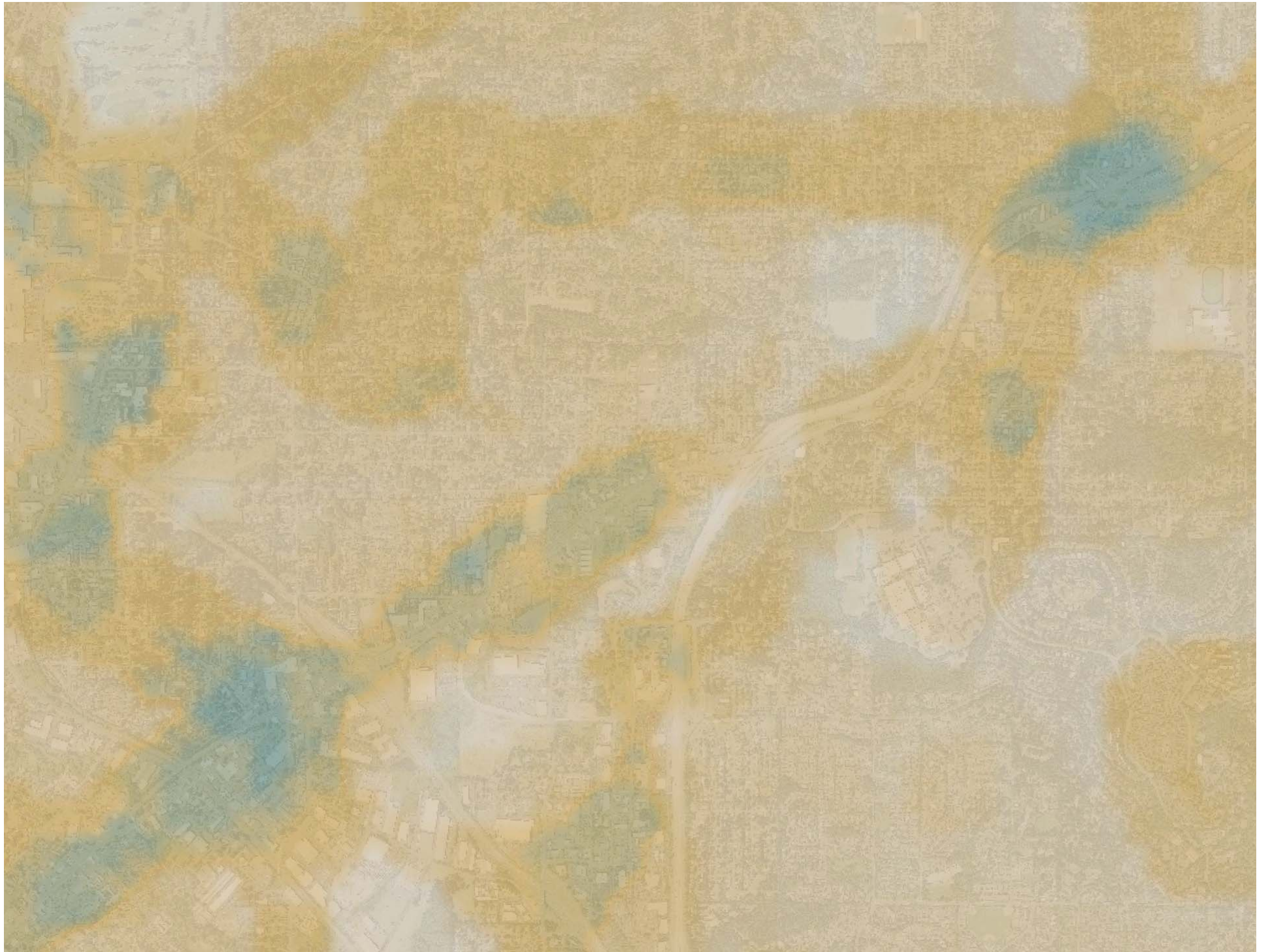
transit orientation score





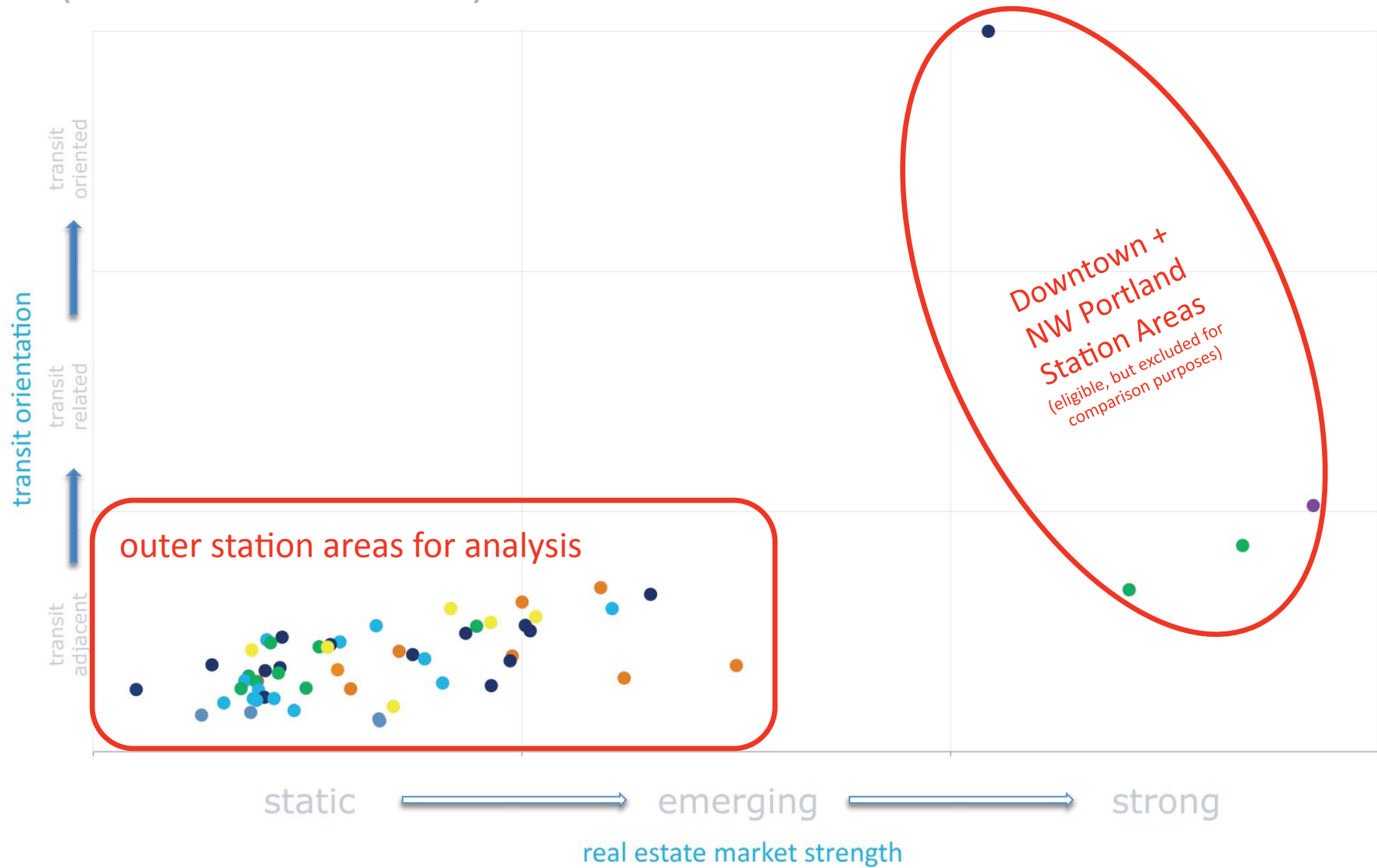






Typology

(market + TOD Score)



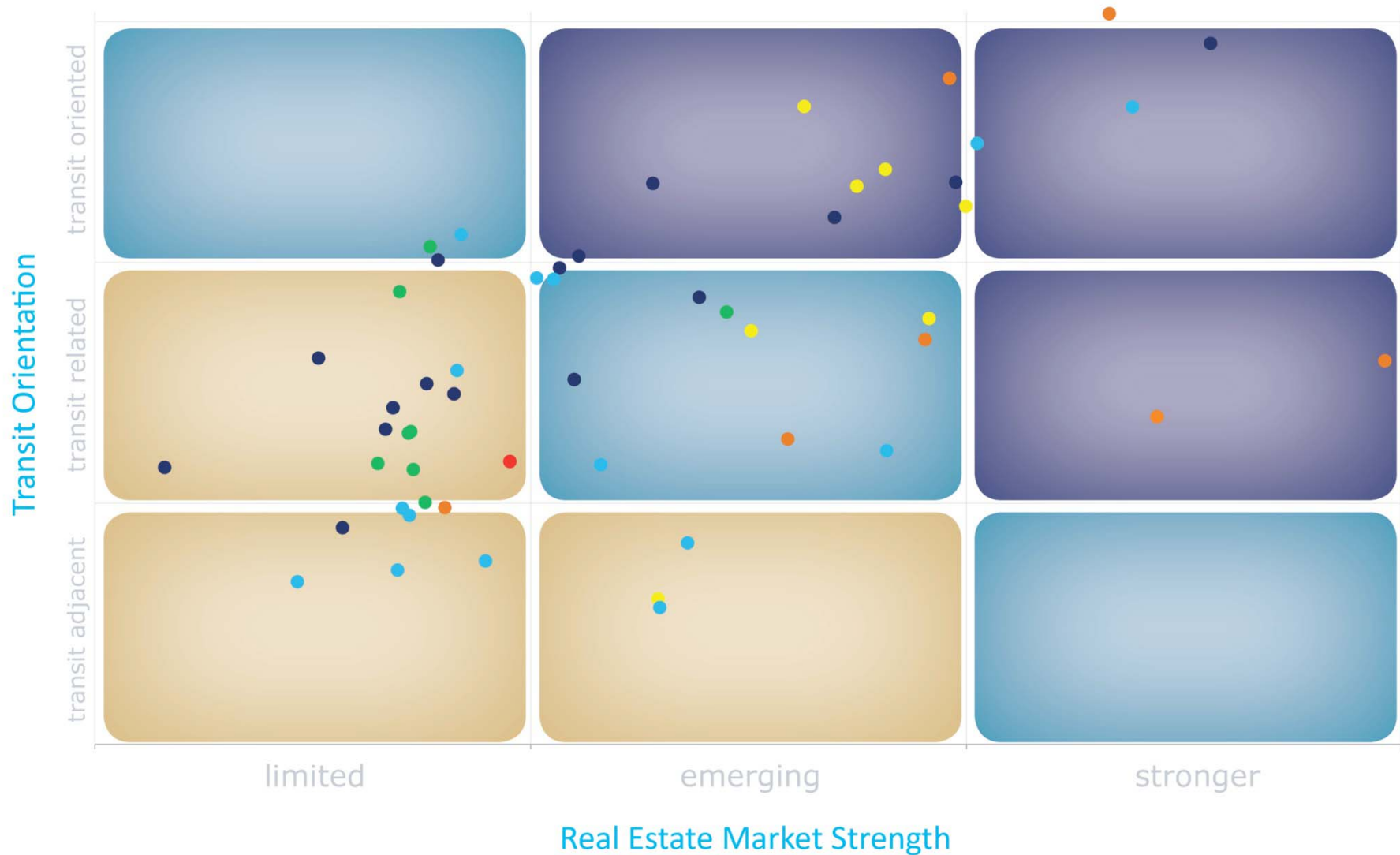
Station Community Typology

(market + TOD Score)



Station Community Typology

(market + TOD Score)



3/3/11

● Eastside

● Westside

● Airport

● Interstate

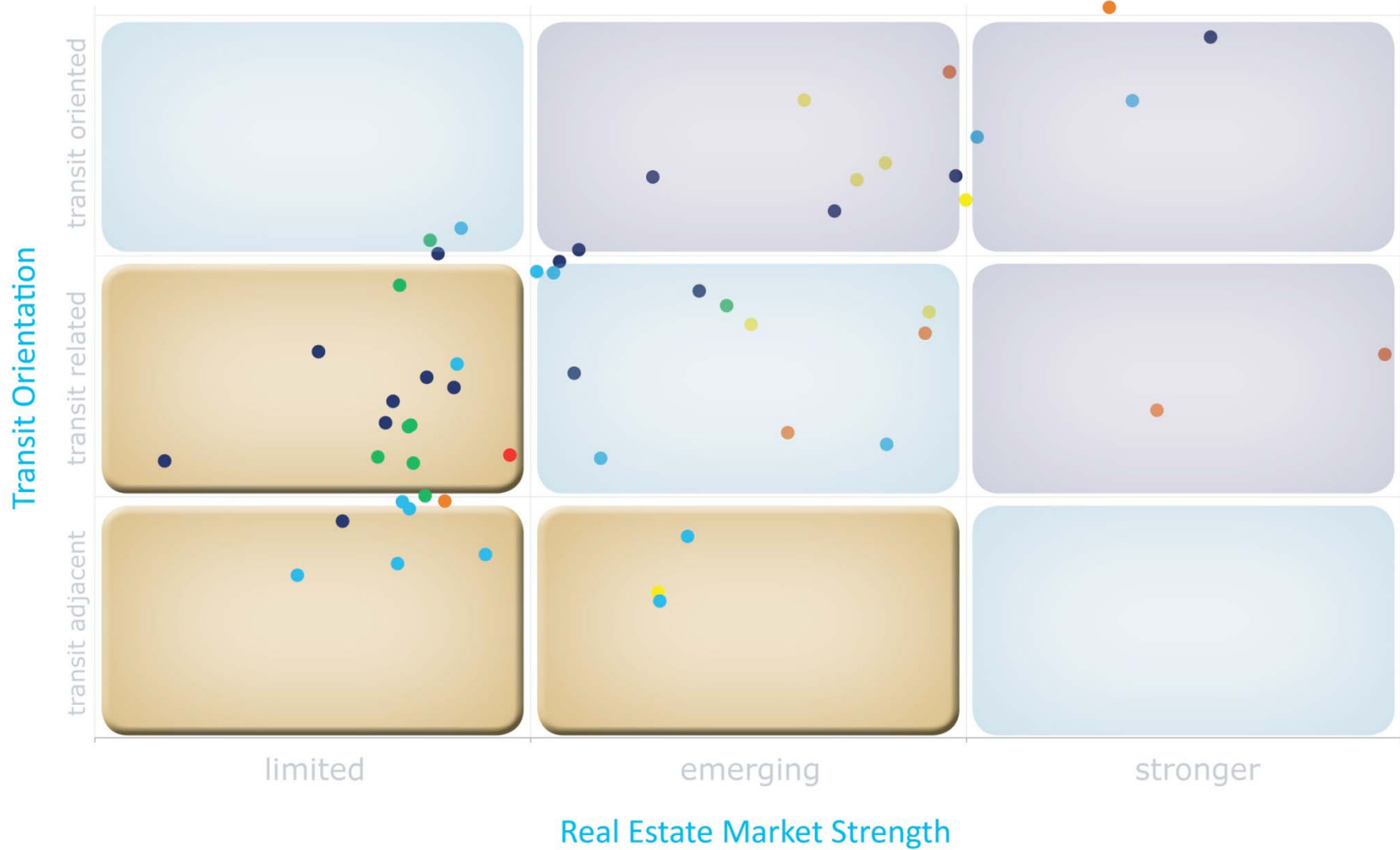
● Green

● Milwaukie

32

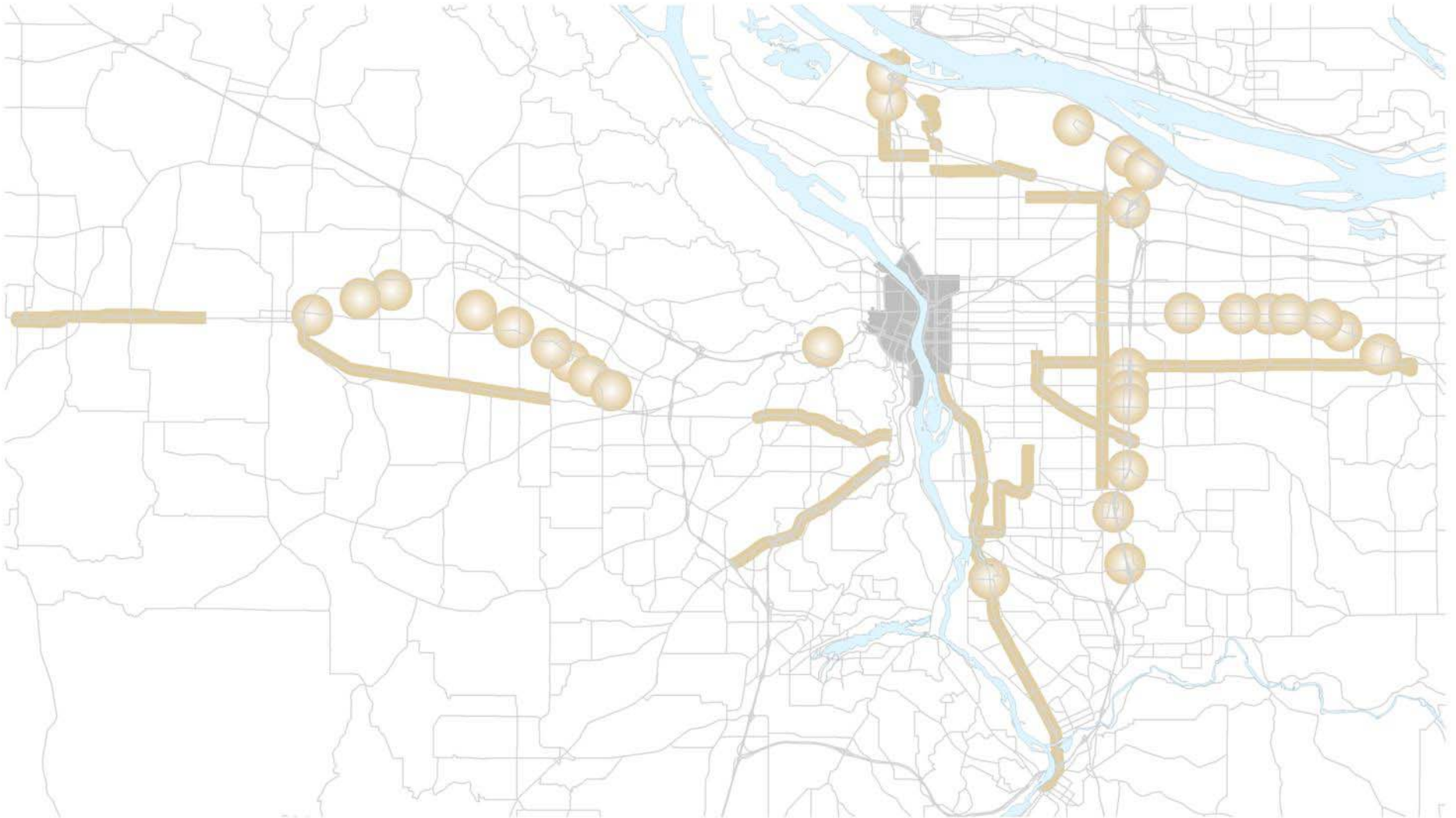
Plan + Partner

(longer term station areas)



Plan + Partner

(longer term station areas)



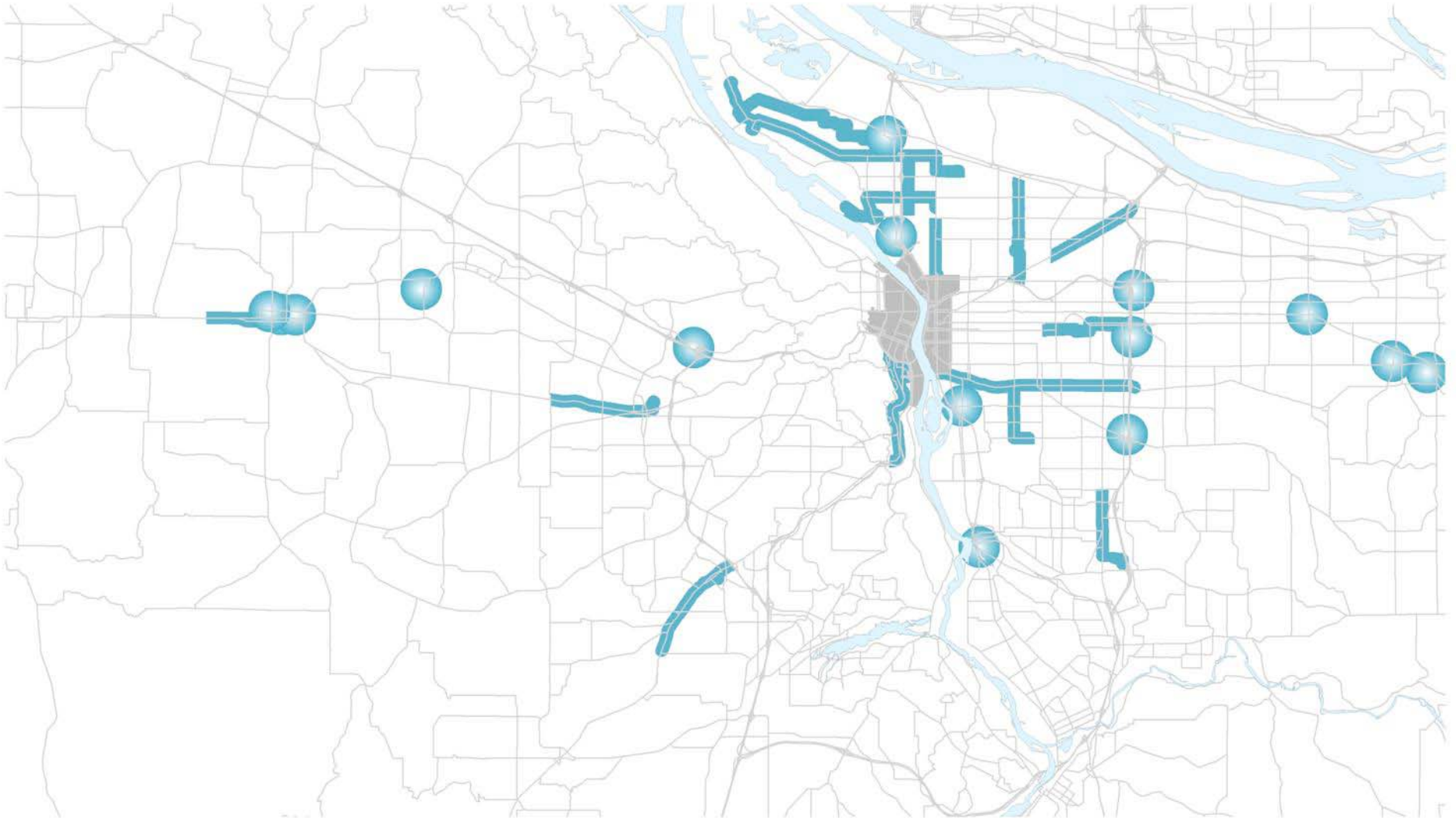
Catalyze + Connect

(emerging station areas)



Catalyze + Connect

(emerging station areas)



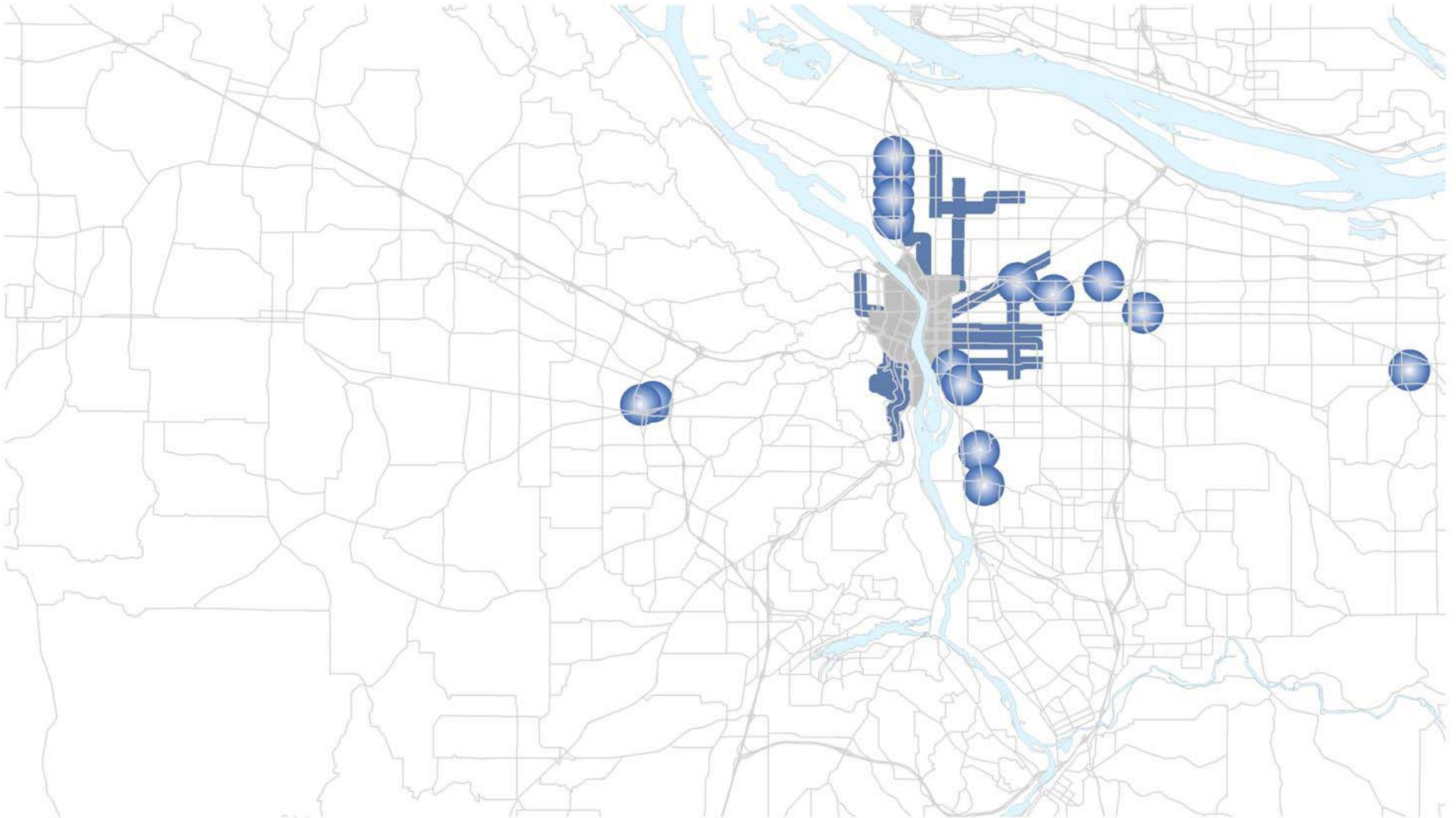
Infill + Enhance

(near term station areas)



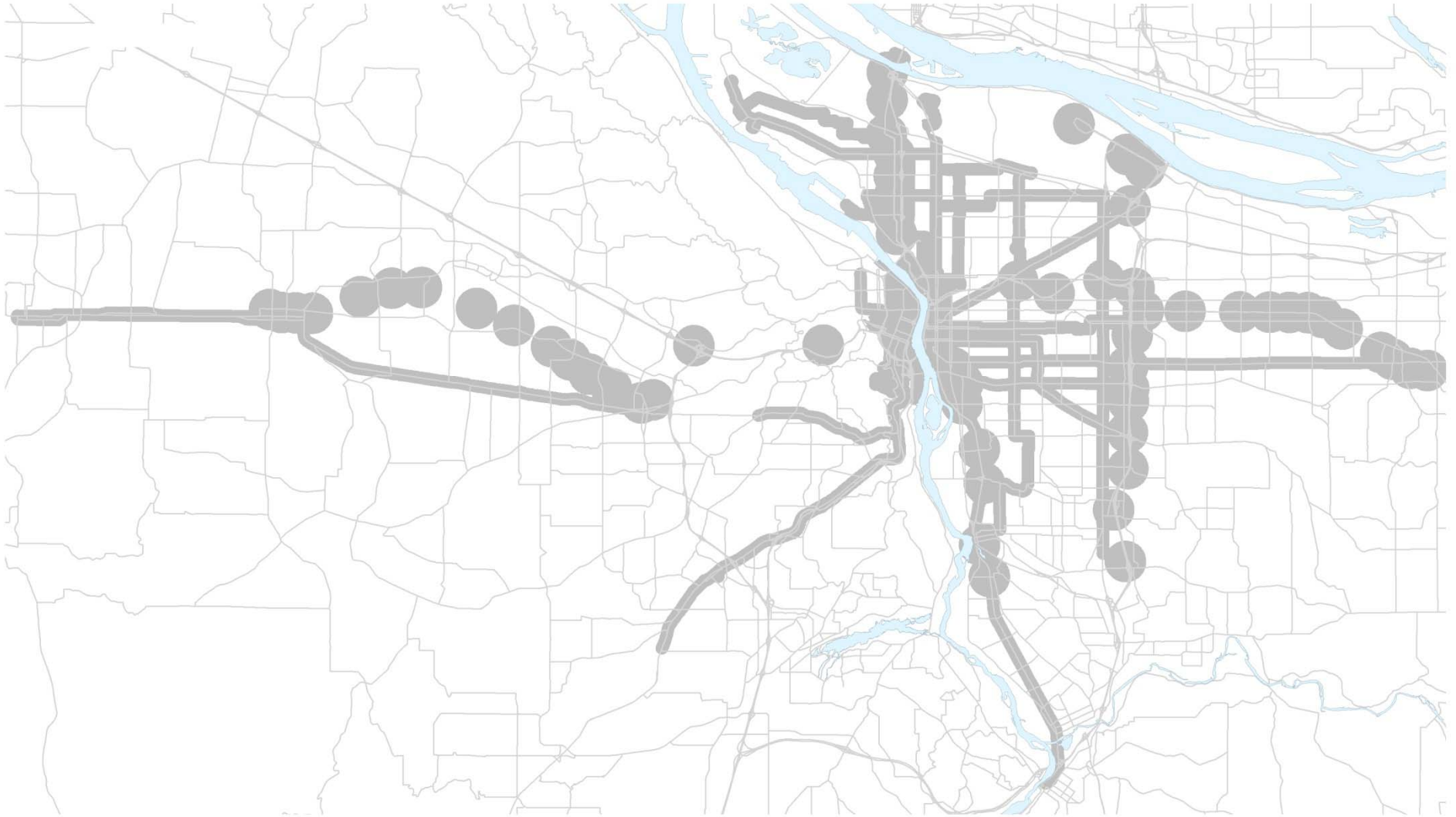
Infill + Enhance

(near term station areas)



TOD Typology Clusters

(market + urban form readiness)

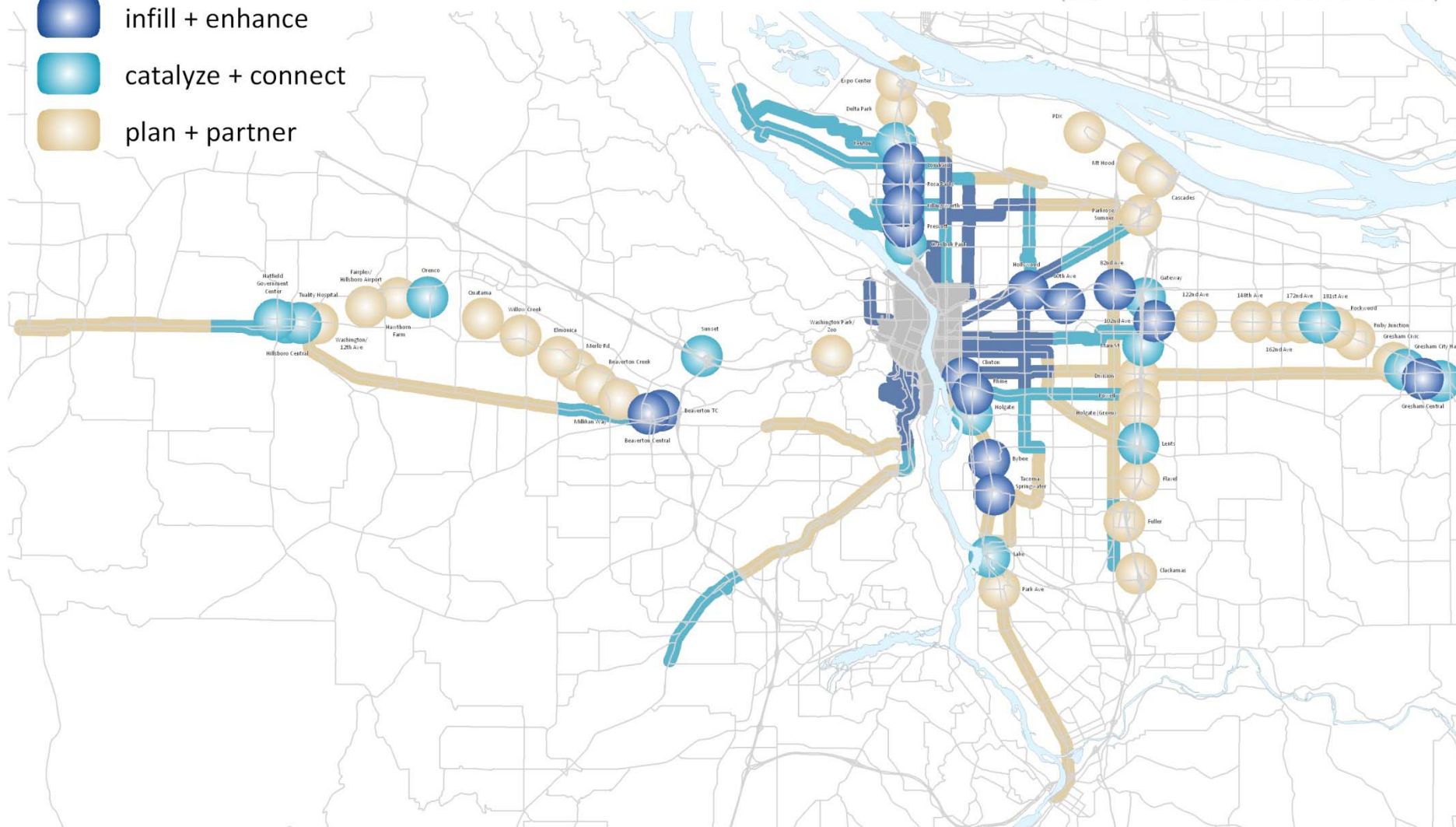


(market + urban form readiness)

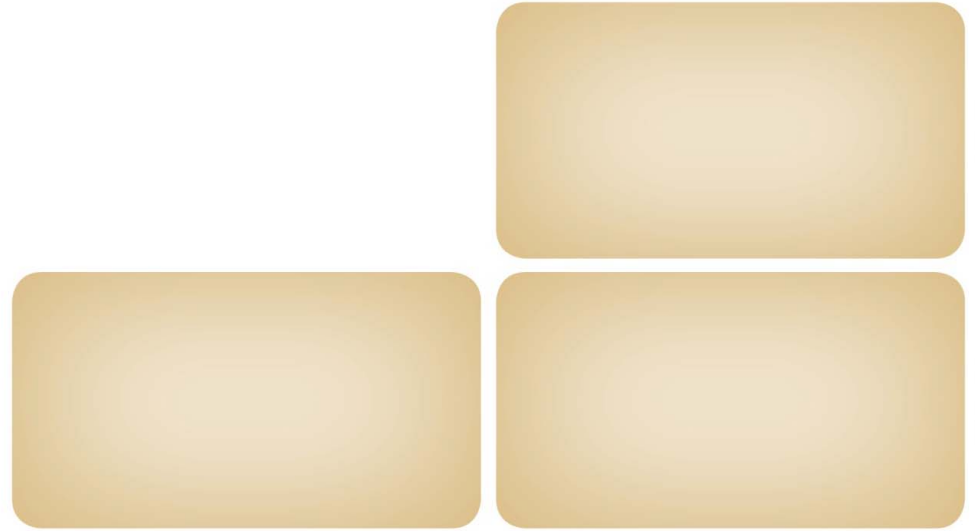
(market + urban form readiness)

- infill + enhance
- catalyze + connect
- plan + partner

- infill + enhance
- catalyze + connect
- plan + partner



next steps



- Finalize TOD Corridor and Station Area Typology
- Further develop phasing strategy linked to typology
- Update data on annual basis
- Final TOD Strategic Plan & Investment Strategy



q + a

3/3/11

christopher.yake@oregonmetro.gov