



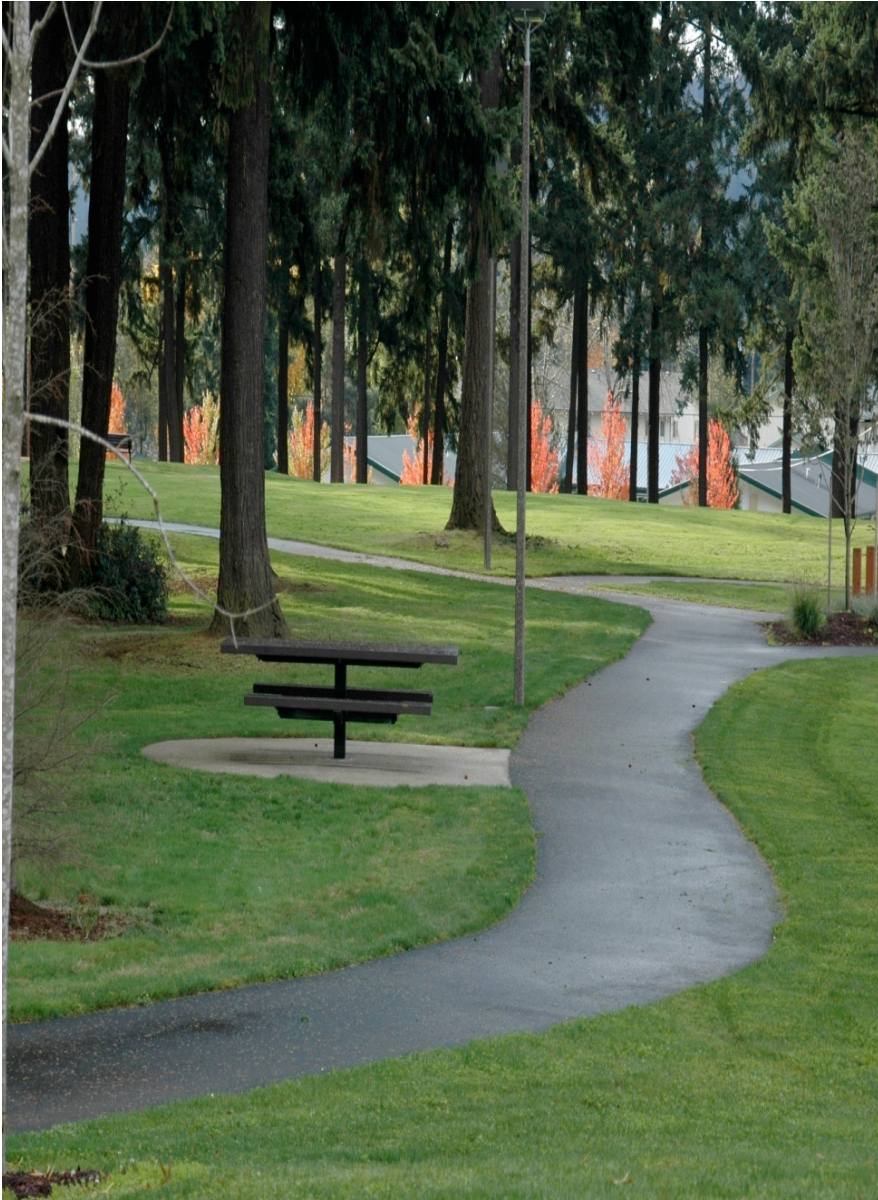
tomorrow's health today

New Partners in
Smart Growth

February 3, 2011



oregon
**public
health**
institute



Strategic Focus on the Prevention of Childhood Obesity

Healthy Community Planning

Access to Healthy Food

Active Living

Nutrition Policy

Breastfeeding

Transportation HIAs in PDX-Vancouver Region

Lake Oswego to Portland Transit Project (project)

Statewide Policies to Reduce Vehicle Miles Travelled (policy)

Eugene Climate Energy Action Plan (policy)

Clark County Bike/Pedestrian Master Plan (policy)

Columbia River Crossing Interstate Bridge Replacement (project)

Sellwood Bridge Replacement (project)

www.oregon.gov/DHS/ph/hia/completedhias.shtml

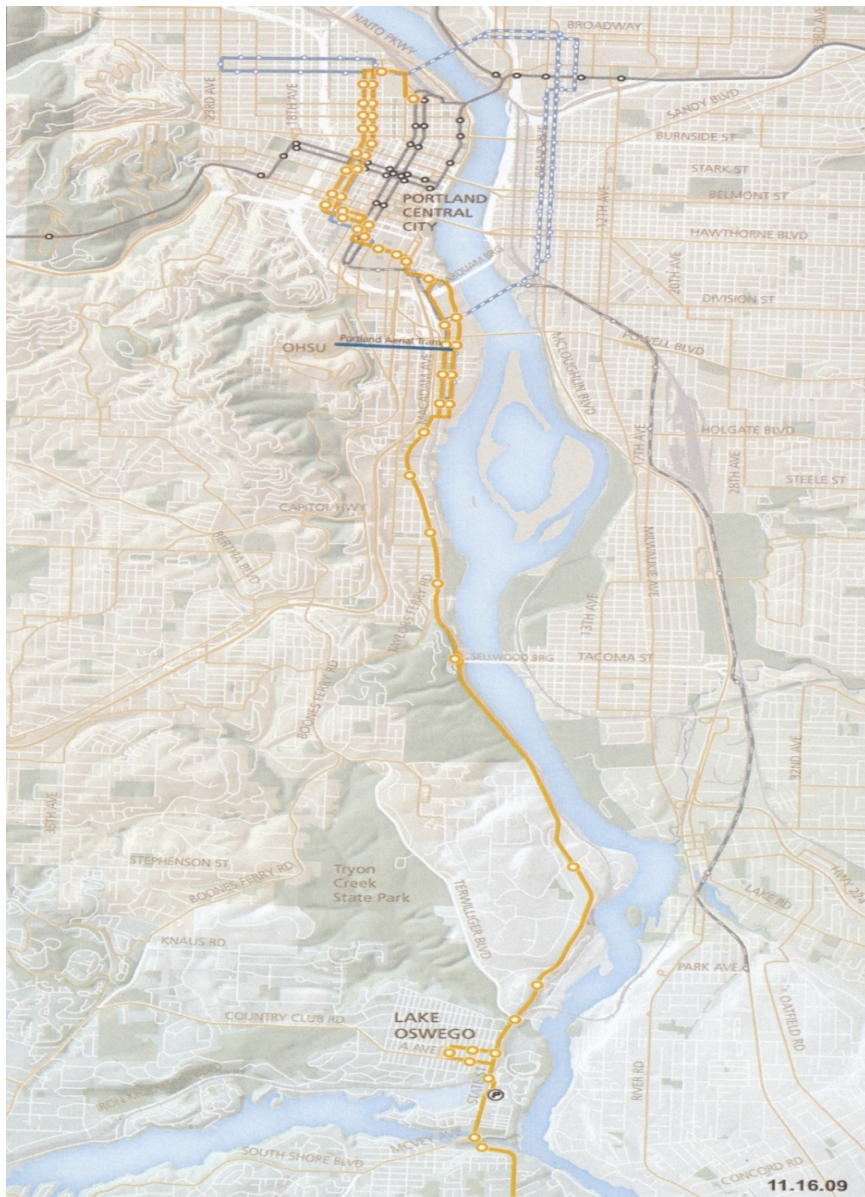


oregon
public
health
institute



compact decision making

- Comment on DEIS
- Prioritize transpo project lists based on health impact
- Request funding for projects
- Inform policy debates, impact long-range planning
- Promote mitigation strategies for projects
- Advance modeling and forecasting methods



Lake Oswego to Portland Transit Project

HIA on 3 transit alternatives considered in the Draft Environmental Impact Statement:

- No Build
- Enhanced Bus
- Streetcar

www.orphi.org/healthy-community-planning/health-impact-assessments

Primary Objectives:

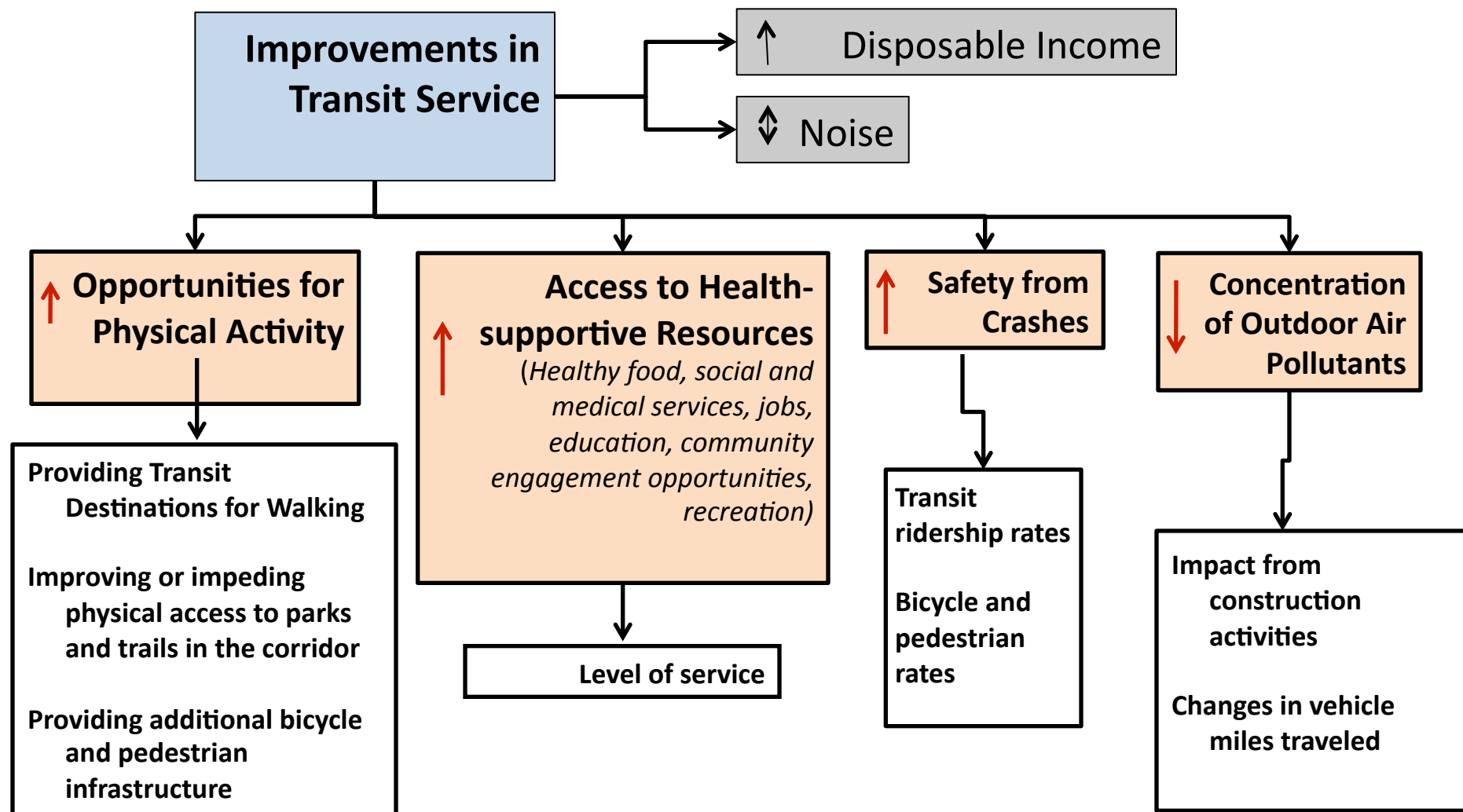
1. Complement DEIS by more fully assessing the impacts of the different transit scenarios on health determinants in the social and built environments.
2. Assess health impacts of projects with potential to impact greenhouse gas emissions.
3. Build capacity of regional government and non-profit partners to integrate health assessment into policy and project development.





Screening Criteria

- Topic Area
- Timeliness
- Policy Impact
- Sustainability
- Technical Capacity Building
- Replicability
- Feasibility



Summary Scenario Comparison		No-Build	Enhanced Bus	Streetcar
Physical Activity	How much more physical activity will people get as a result of walking to and from transit?		+	++
	How will the resulting infrastructure impact access to parks and trails in the corridor?		-/+	-/++
	What additional bicycle and pedestrian infrastructure will accompany the two build scenarios?		+	++
Air Pollution	How will construction activities impact temporary air toxics levels in the corridor?		(-)	(--)
	How will long-term changes in VMT impact local and regional air toxics levels (2010-2035)?		+	++
Traffic Safety	How will the different scenarios impact the numbers of injuries and deaths resulting from traffic crashes?		+	++
	How will the different scenarios impact bicycle and pedestrian activity in the corridor?		+	++
HSR	How do the scenarios impact access to health-supportive resources?		+	++



Evaluation Goals

- Create a set of best practices and lessons learned
- Document how HIA influenced decision making
- Record benefits of the HIA in increasing HIA capacity at Metro government
- Add to literature on HIA evaluations

Transportation Equity

vulnerable populations

ing priorities, project design

equity integrated into Portland
advocacy





oregon **public health** institute

tomorrow's health today

Noelle Dobson, Steve White

(503) 227-5502

noelle@orphi.org, steve@orphi.org

www.orphi.org



oregon
**public
health**
institute