

From Dustbowl Days to a Smarter Future-Part One

Presentation for the New Partners for Smart Growth Conference

*Charlotte, NC
February 4, 2011*

Larry Hopper, AICP

Urban Retrofit + Health + Sustainability



OVERVIEW

- Smart Growth Taking Root in a Former Dustbowl
- MAPS3 and its Smart box of retrofits for OKC
- Why urban retro-fits, layout, transit, and tax initiatives are so important to public health and smart growth
- Public Health and Urban Planning: Frat. Twins
- Mainstream Partnerships are key: health equity, disability advocates, Q.O.L. promoters
- Leadership and building alliances
- Fixed Guideway Transit Plan & Okla. Streetcar
- The Path Ahead

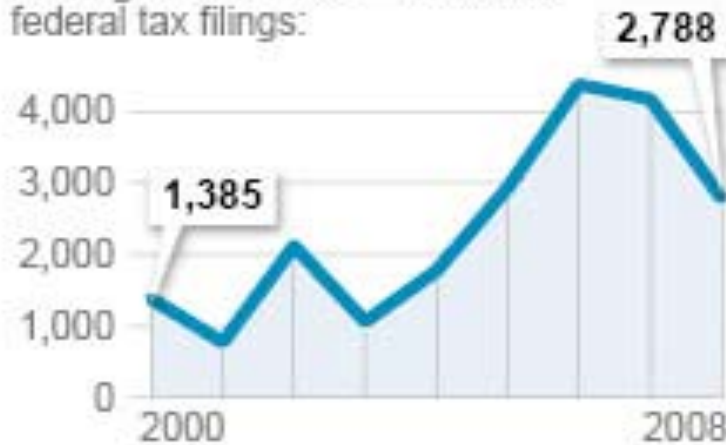
Urban Retrofit + Health + Sustainability

USA Today, October 12, 2010

More Californians reverse course and head to Oklahoma

- Reverse Migration: Moving from CA to OK!

Net migration — Californians moving to Oklahoma minus Oklahomans moving to California — based on federal tax filings:



Source: IRS
By Karl Gelles, USA TODAY

Urban Retrofit + Health + Sustainability

METRO Transit



MAPS 3- What is It?

It's about TRUST: Revenue over 7 Yrs=\$750+m

Modern Streetcar \$120 Million

70 acres Grand Park \$130 Million

57 mi of paved trails & 70 mi of sidewalks \$50 M

Rail/bus Transit Hub, etc. \$10 M

Senior Wellness Centers \$50 M

Convention Center \$280 M

River/kayak projects \$60 M

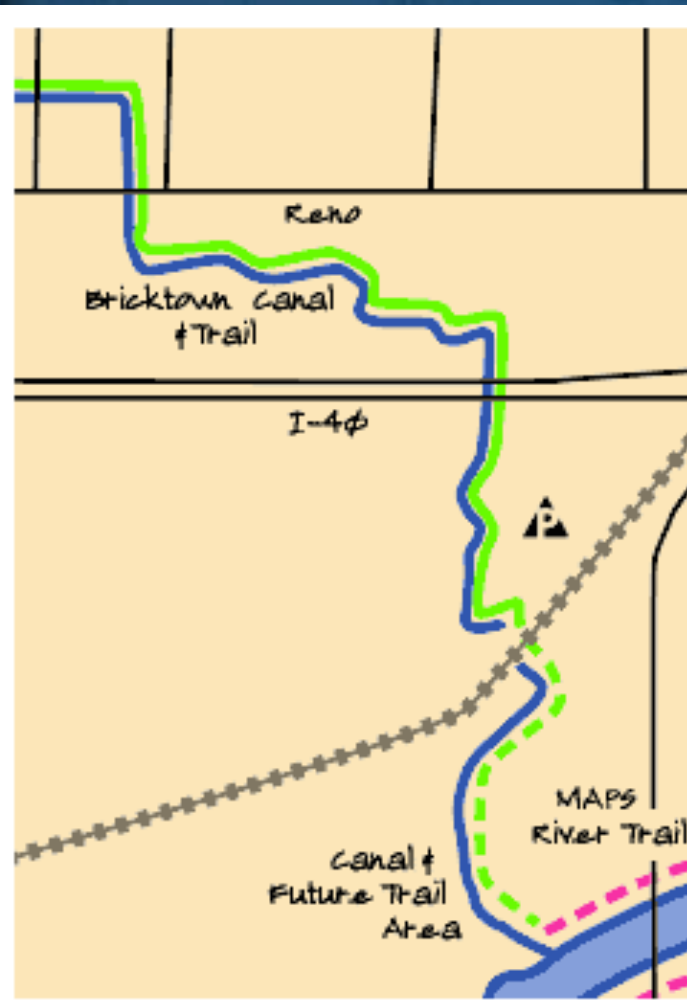
Fairgrounds Additions \$60 M



Urban Retrofit + Health + Sustainability

METRO Transit

Can City Retro-fit Promote Health?



- Yes, Bricktown in OKC as an example
- Addition of trails and sidewalks
- Adaptive reuse of buildings: cleaner/greener
- Transit and clean air
- Health is not just about obesity, hearts, diabetes:
 - Add arthritis
 - Add depression/mental health
- Retrofit for all: universal design/disabilities

Urban Retrofit + Health + Sustainability



Could Disciplines Promote a Shared Aim?

- Many groups promoted MAPS
- Planning and Public Health: fraternal twins
- They evolved differently
- Note the reconvergence
- Be creative and find partners who gain sympathy or are seen as mainstream
- Communicate

Urban Retrofit + Health + Sustainability



Public Transportation: "Centsible" Vehicle for Sustainability

- Such as MAPS 3
- Social justice benefit
- Environmental benefit
- Transit Health Benefits: walking, clean air, etc.
- Transit + Sustainability+Health = T.O.D.
- Funding for transit=Equity

Urban Retrofit+Health+Sustainability



Oklahoma City Metro

- “I’ve never been to Spain, but I’ve been to Oklahoma...”
- Innovation: invention and first use of parking meter
- 600+ sq miles in one city! The value to the sustainability movement
- Birthplace of the shopping cart
- Big oil and gas companies
- Pioneer culture, and Native/Tribal influences
- America’s Olympic Training Site
- 2005 Fixed Guideway Plan; 2010 Plan OKC



Bricktown
Before
and After



Urban Retrofit + Health + Sustainability

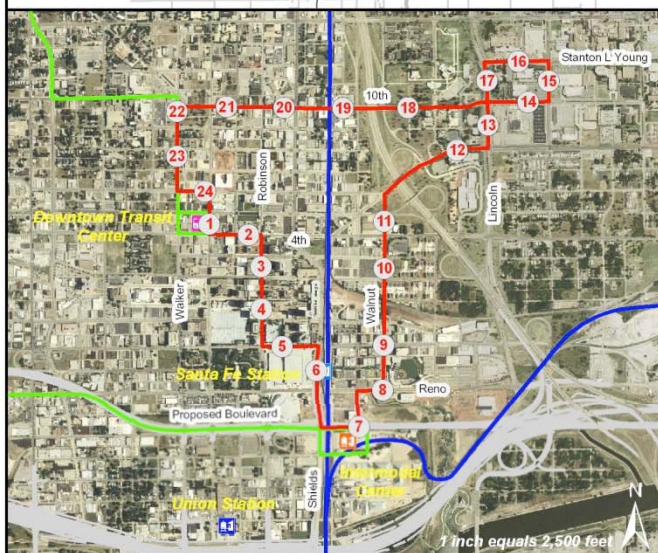
NOTE: Stations shown are general areas and do not represent specific stop locations



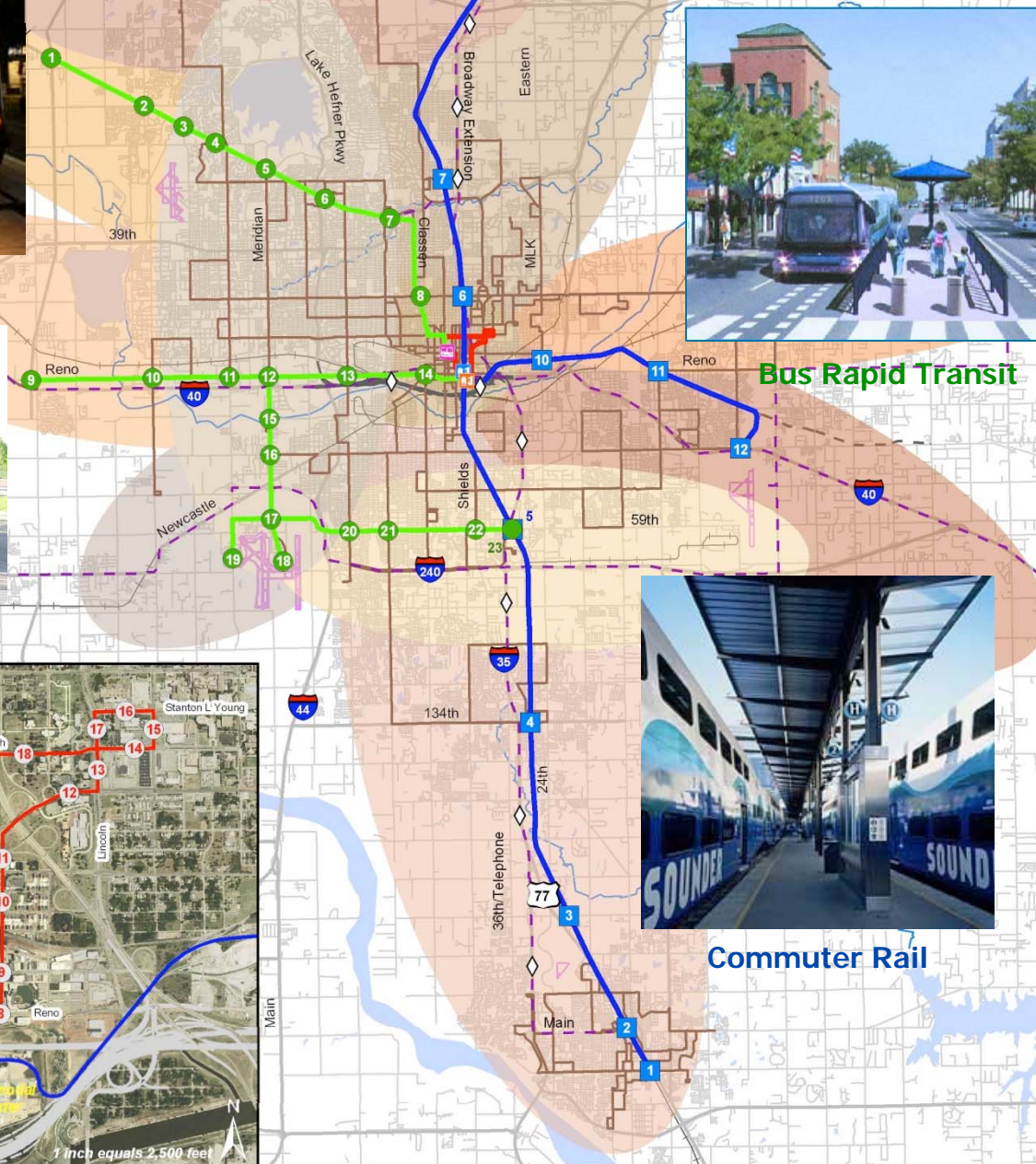
Modern Streetcar



Enhanced Bus



Fixed Guideway System Plan



Fixed Guideway Stations

Bus Rapid Transit Stations

1. Kilpatrick Station
2. Council Station
3. Rockwell Station
4. Brookside Station
5. Meridian Station
6. Integris Baptist
7. Penn Square Mall Station
8. Classen Station
9. Sara Station
10. Council Station
11. MacArthur Station
12. Meridian/Reno Station
13. Fairgrounds Station (Special Event)
14. Western Station
15. 15th Street Station
16. 29th Street Station
17. 54th/Meridian Station
18. Airport Station
19. FAA Station
20. May Station
21. Pennsylvania Station
22. Shields Station
23. 59th Street Intermodal Station

Commuter Rail Stations

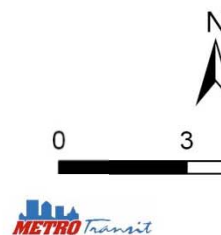
1. OU Station (Special Event)
2. Norman Station
3. Tecumseh Station
4. 4th Street Station
5. 59th Street Intermodal Station
6. 23rd Station
7. 63rd Street Station
8. Memorial Station
9. Edmond Station
10. MLK Station
11. Sooner Station
12. Tinker Station

Modern Streetcar Stations

1. METRO Downtown Transit Station
2. Memorial Station
3. Robert S. Kerr Station
4. Park Station
5. Convention Center Station
6. Santa Fe Station
7. Intermodal Station
8. Ballpark Station
9. Sheridan Station
10. Deep Deuce Station
11. Flat Iron Station
12. PHF Station
13. Lincoln Station
14. OU Medical Center South
15. OU Medical Center East
16. OU Medical Center North
17. OU Medical Center West
18. 10th Street Station
19. Oklahoma Station
20. Broadway Station
21. Harvey Station
22. St. Anthony Station
23. Walker Station
24. Federal Station

Legend

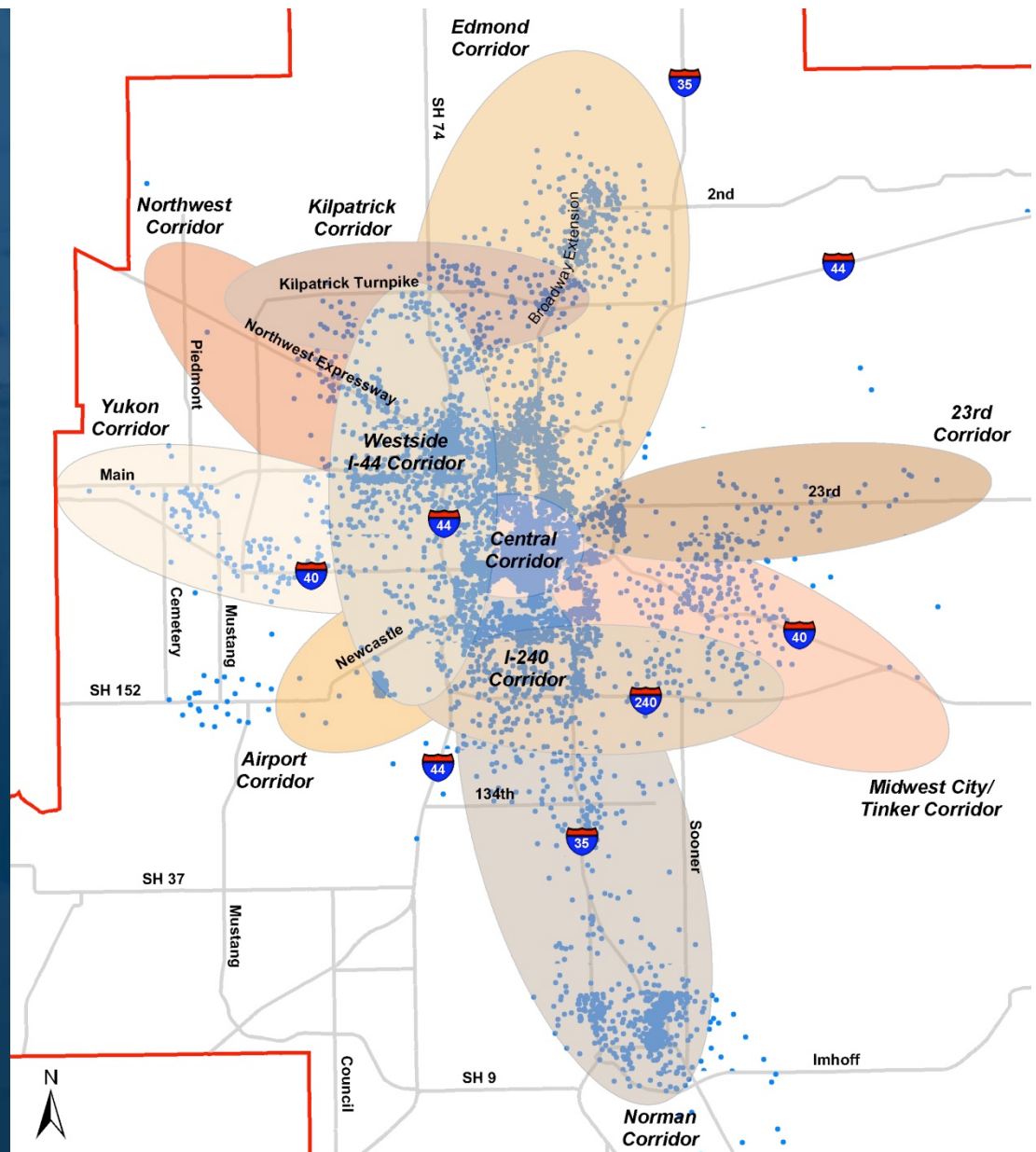
- ◇ HOV/Managed Lane
- Bus Rapid Transit
- Commuter Rail
- Modern Streetcar
- Intermodal Station
- Downtown Station
- Santa Fe Station
- Commuter Rail
- Bus Rapid Transit
- Modern Streetcar
- Enhanced Bus
- Express Bus
- Future I-44
- 23rd Corridor
- Airport Corridor
- Central Corridor
- Edmond Corridor
- I-240 Corridor
- Kilpatrick Corridor
- Midwest Corridor
- Norman Corridor
- Northwest Corridor
- Westside I-40
- Yukon Corridor



1 Dot = 200 Employees/Square Mile




- 2030 Employment Density

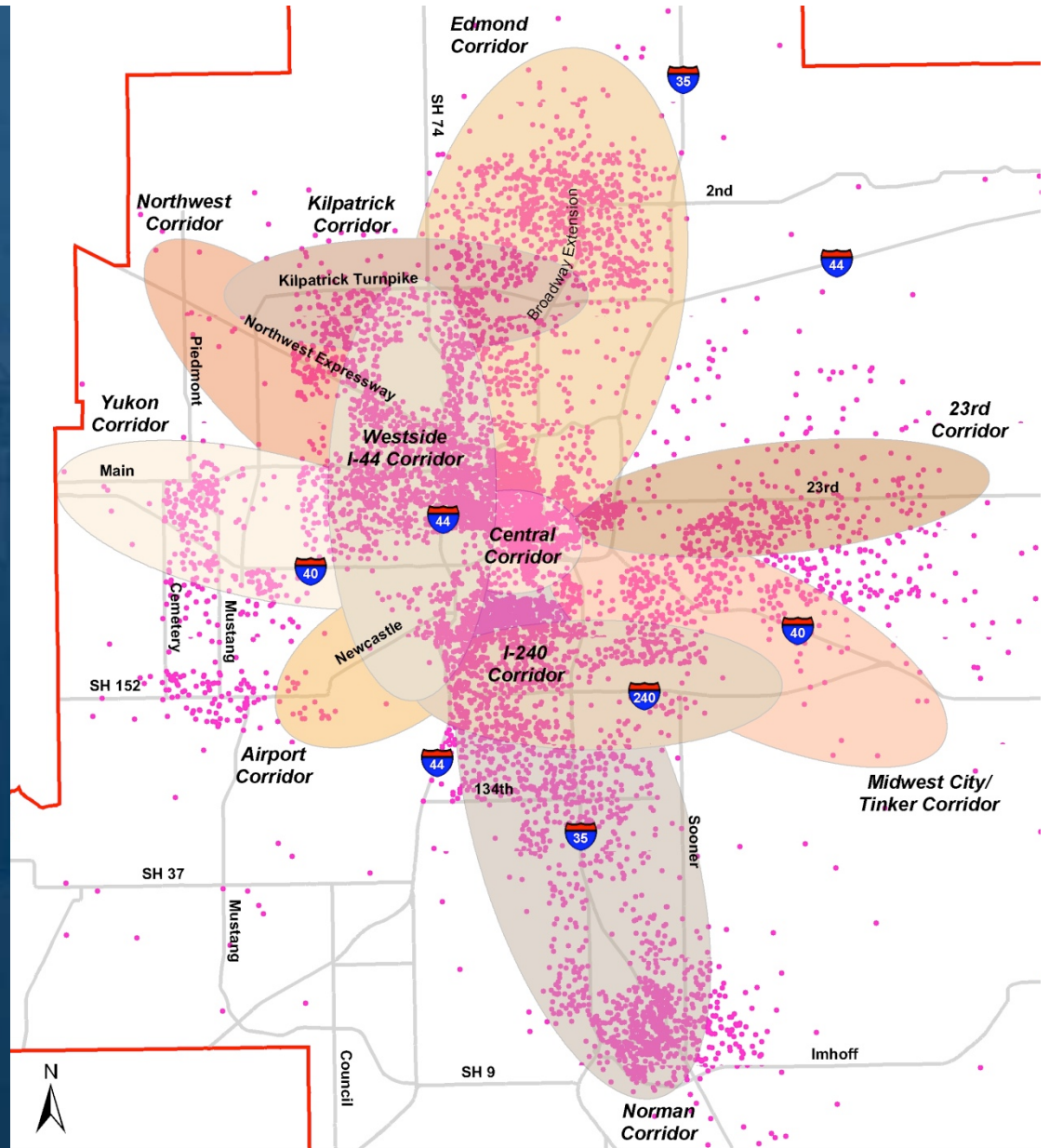
Urban Retrofit+Health+Sustainability



2030 Population Density

Legend

-  OKC Metro Area
-  1 Dot = 200 Persons/Square Mile
-  2030 Population Density



Source: Association of Central Oklahoma Governments

Urban Retrofit + Health + Sustainability

METRO Transit

Enhanced Bus Service

- More frequent bus service
- Extend span of service hours
- Expand service area and paratransit
- More express routes
- Bring region up to par
- Rubber Tire Helps Rail



Urban Retrofit + Health + Sustain

METRO Transit

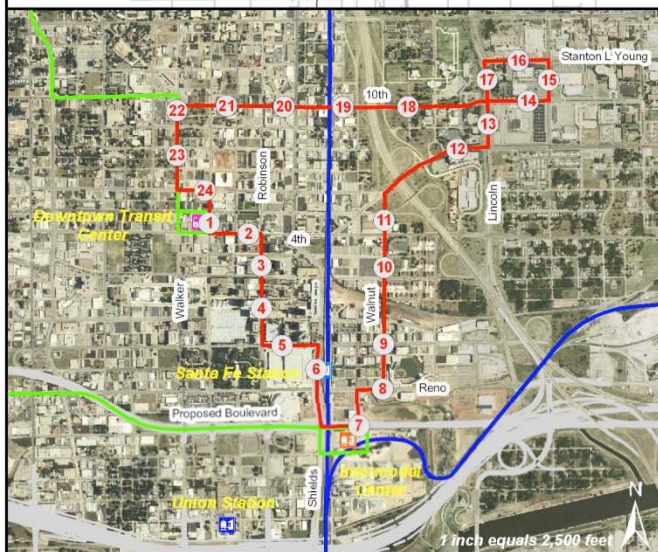
NOTE: Stations shown are general areas and do not represent specific stop locations



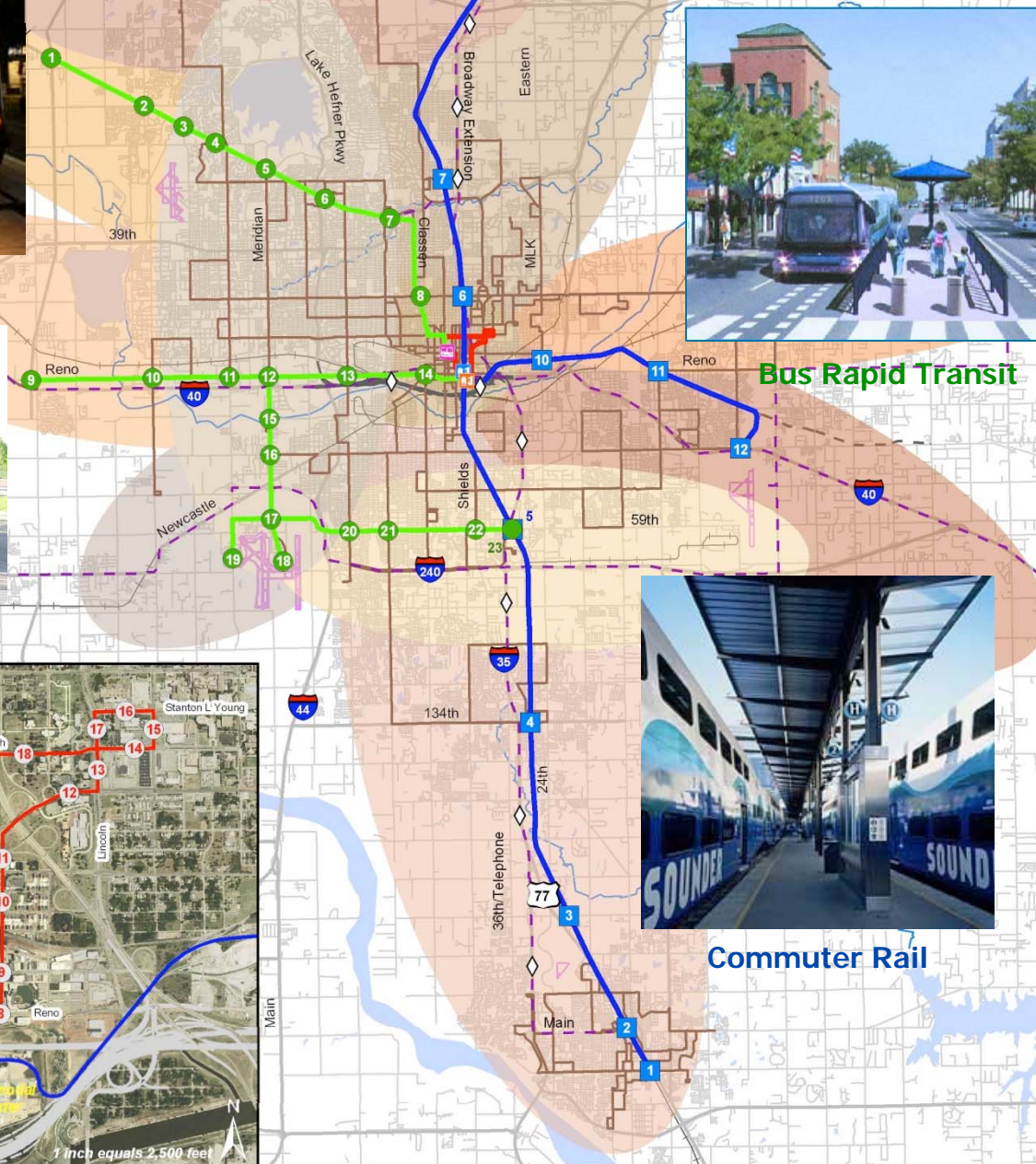
Modern Streetcar



Enhanced Bus



Fixed Guideway System Plan



Fixed Guideway Stations

Bus Rapid Transit Stations

1. Kilpatrick Station
2. Council Station
3. Rockwell Station
4. Brookside Station
5. Meridian Station
6. Integris Baptist
7. Penn Square Mall Station
8. Classen Station
9. Sara Station
10. Council Station
11. MacArthur Station
12. Meridian/Reno Station
13. Fairgrounds Station (Special Event)
14. Western Station
15. 15th Street Station
16. 29th Street Station
17. 54th/Meridian Station
18. Airport Station
19. FAA Station
20. May Station
21. Pennsylvania Station
22. Shields Station
23. 59th Street Intermodal Station

Commuter Rail Stations

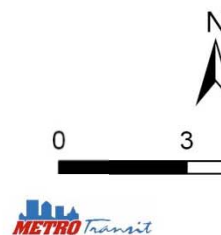
1. OU Station (Special Event)
2. Norman Station
3. Tecumseh Station
4. 4th Street Station
5. 59th Street Intermodal Station
6. 23rd Station
7. 63rd Street Station
8. Memorial Station
9. Edmond Station
10. MLK Station
11. Sooner Station
12. Tinker Station

Modern Streetcar Stations

1. METRO Downtown Transit Station
2. Memorial Station
3. Robert S. Kerr Station
4. Park Station
5. Convention Center Station
6. Santa Fe Station
7. Intermodal Station
8. Ballpark Station
9. Sheridan Station
10. Deep Deuce Station
11. Flat Iron Station
12. PHF Station
13. Lincoln Station
14. OU Medical Center South
15. OU Medical Center East
16. OU Medical Center North
17. OU Medical Center West
18. 10th Street Station
19. Oklahoma Station
20. Broadway Station
21. Harvey Station
22. St. Anthony Station
23. Walker Station
24. Federal Station

Legend

- ◇ HOV/Managed Lane
- Bus Rapid Transit
- Commuter Rail
- Modern Streetcar
- Intermodal Station
- Downtown Station
- Santa Fe Station
- Commuter Rail
- Bus Rapid Transit
- Modern Streetcar
- Enhanced Bus
- Express Bus
- Future I-44
- 23rd Corridor
- Airport Corridor
- Central Corridor
- Edmond Corridor
- I-240 Corridor
- Kilpatrick Corridor
- Midwest Corridor
- Norman Corridor
- Northwest Corridor
- Westside I-40
- Yukon Corridor





Modern Streetcar

- On-street with mixed traffic, ADA Accessible
- Electric Powered (LRT Style) Vehicles: CNG?
- Sustains air quality
- Portland, Tacoma, Seattle, OKC (Max.Speed Needed= **45mph**)
- Designed for Urban Downtown Areas
- Supports Many Uses and Visitor Destinations



Urban Retrofit+Health+Sustainability

METRO Transit



Streetcar: Transformational

- Economic Development
- Attracts the hip and creative
- A boost to people with disabilities
- Helps unify people as they talk and travel
- Needs bus service support
- Extends walkability
- More

Urban Retrofit + Health + Sustainability

Bus Rapid Transit (BRT)

- BRT lane on-street
- Signal priority
- Alternative fuels
- Short stops



Urban Retrofit + Health + Sustain

Bus Rapid Transit



Urban Retrofit + Health + Sustainability

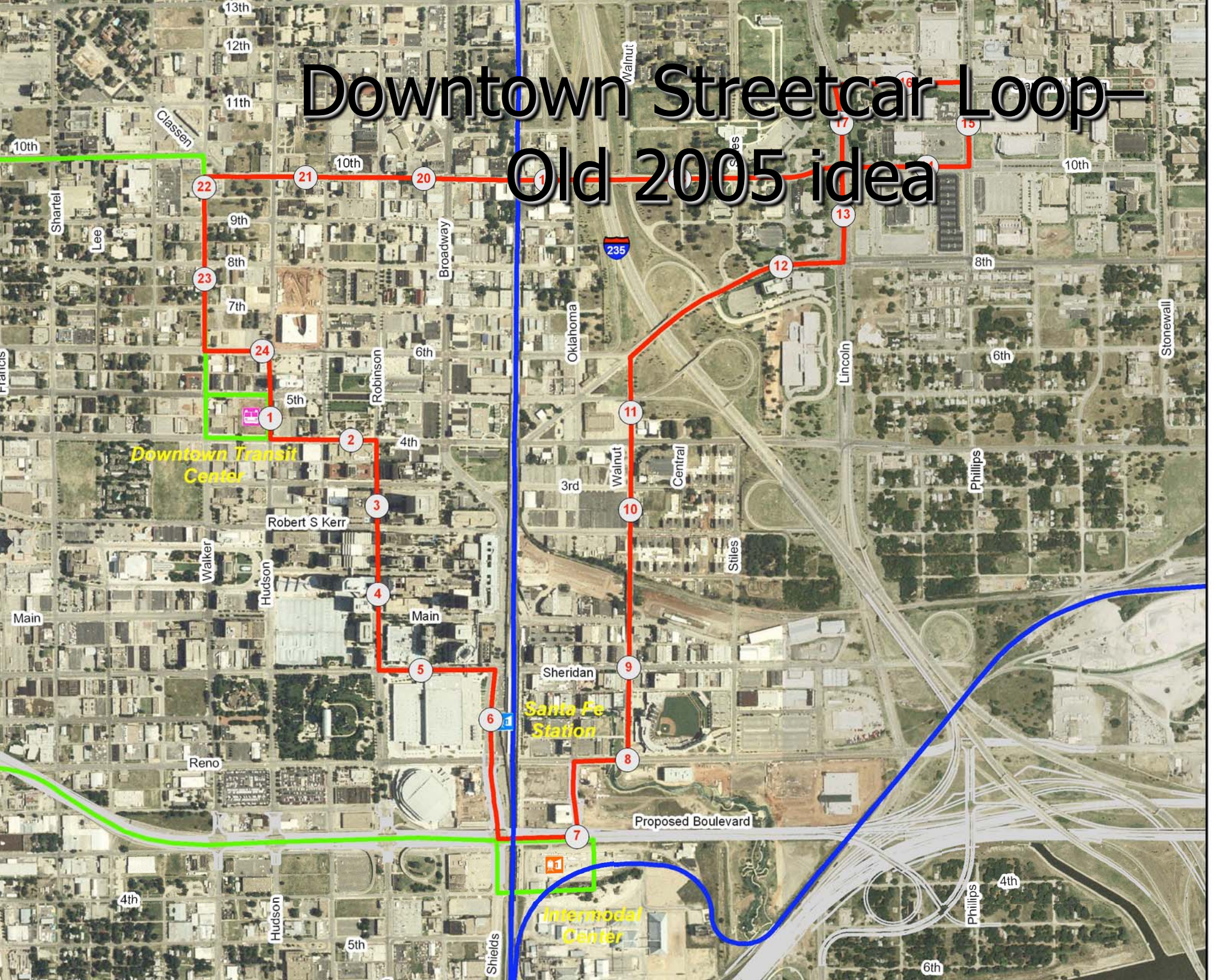
Potential Financial Strategy

- All Require Alliances and Trust
- Modern Streetcar
 - Local Benefits; Local Implementation
 - Up to 50% Federal (for Construction)
 - Requires Local Match Funding Source
- Enhanced Bus, BRT, and Commuter Rail
 - Regional Benefits; Regional Implementation
 - Funded by Multi-jurisdictional Tax Initiative
 - Some Federal Funds for Capital Costs



Urban Retrofit + Health + Sustainability

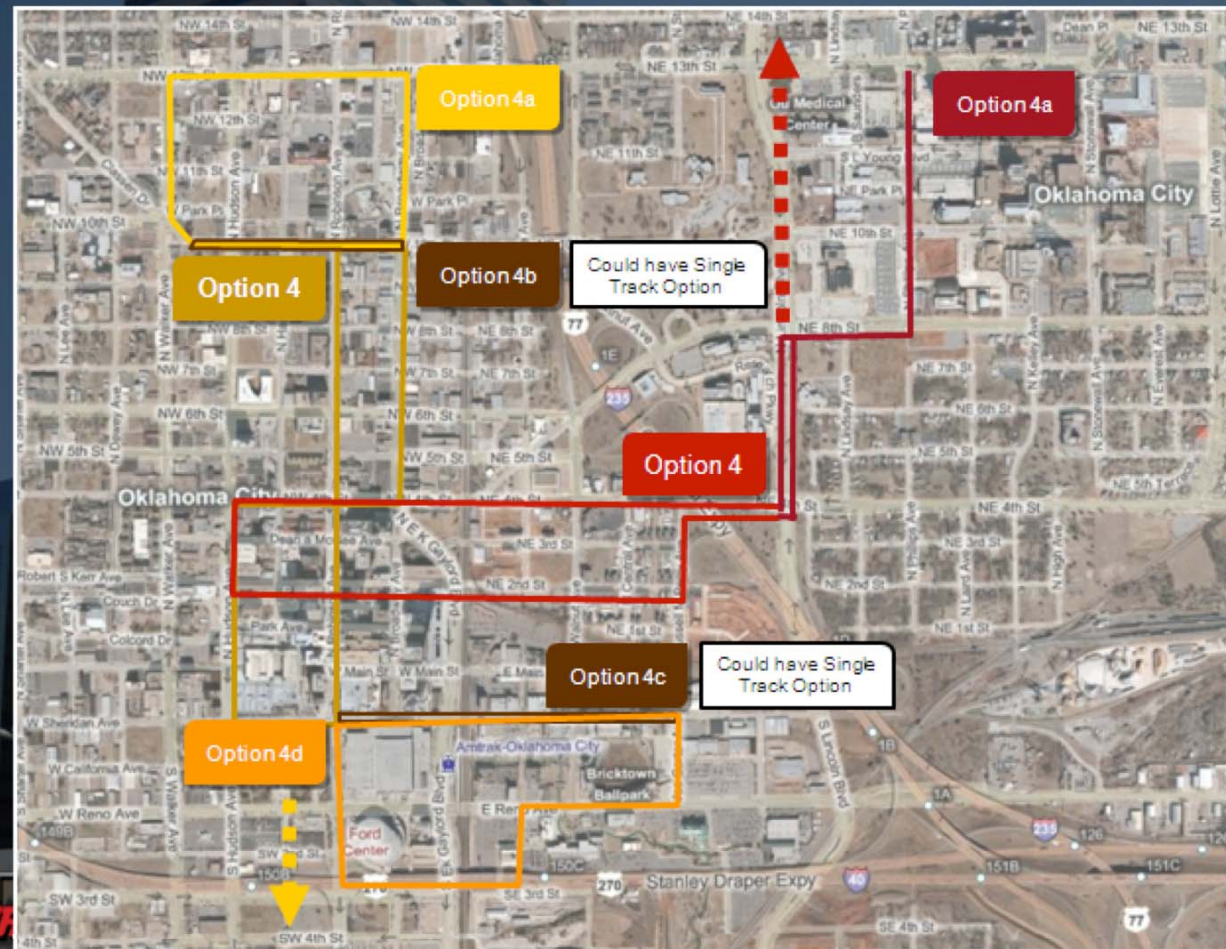
Downtown Streetcar Loop— Old 2005 idea



1. ME
2. Mer
3. Rob
4. Par
5. Con
6. San
7. Inte
8. Ball
9. She
10. Dee
11. Flat
12. PH

2010 Streetcar Route Concept

Example: Phased Implementation of Tier 2 Option 4 and Option 5 (4thth and Kerr Couplet)



Urban Retrofit

METRO

COBS

Report Card on Next Steps Identified in Late 2005

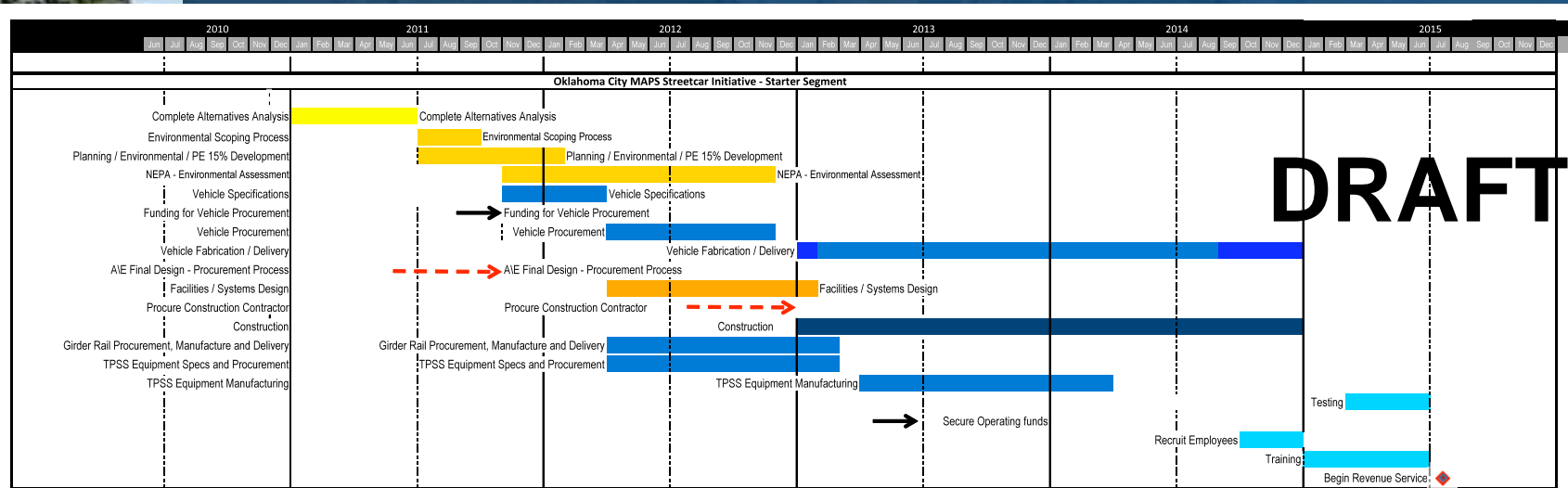
- Upgrade MPO's Regional Travel Demand Model
- Initiate "Starter Corridor" Alternatives Analysis (AA) Study
- Plan for a MAPS 3
- Seek Federal \$ for Preliminary Engineering Phase
- Develop Regional Citizen Support for \$



Urban Retrofit + Health + Sustainability

METRO Transit

Estimated Implementation Schedule for Downtown Circulator Project



Urban Retrofit + Health + Sustainability

Closing Thoughts

- OKC is doing it-You can too!
- Plan to address existing “gap” in service, equity, and future growth needs
- Some projects have local benefits; others have regional benefit
- Implementation requires vision and commitment
- Make alliances and maintain momentum
 - Each of us has an important role



Urban Retrofit + Health + Sustainability



No Resting on Past Laurels...

- Region still needs better bus service
- Health outcomes are still bottom 5
- Help people and leaders see that the work is not done
- Build alliances and collaborations with “NEW PARTNERS
- Add to regionwide citizen awareness and support

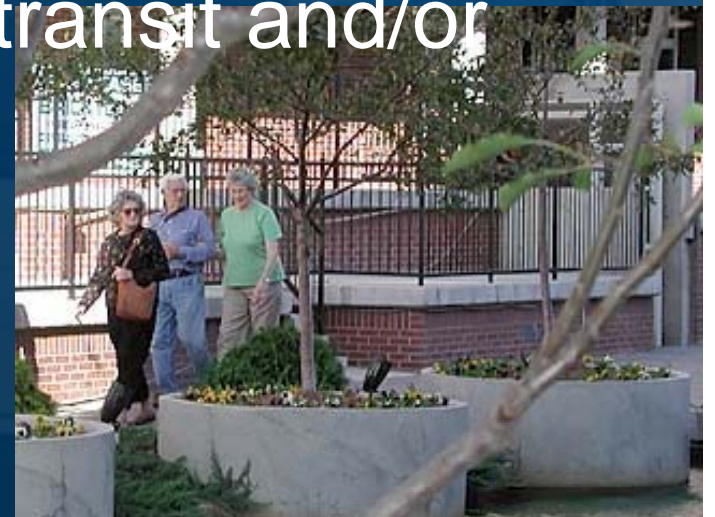
Urban Retrofit + Health + Sustainability

The Path Ahead

- Read more : www.letstalktransit.com
www.planning.org
or www.apta.com
- Know your Planning Commissioner!
- Get involved in Pro-Health Groups and pro-community groups
- Start networking for transit and/or Livability
- **Move Mainstream**



Urban Retrofit + Health + Sustainability





Even if you are on the right track,
you will get ran over if you sit there
long enough.

Will Rogers, Oracle and Oklahoma Humorist

Urban Retrofit + Health + Sustainability





Thank You

larry.hopper@okc.gov

Urban Retrofit + Health + Sustainability

