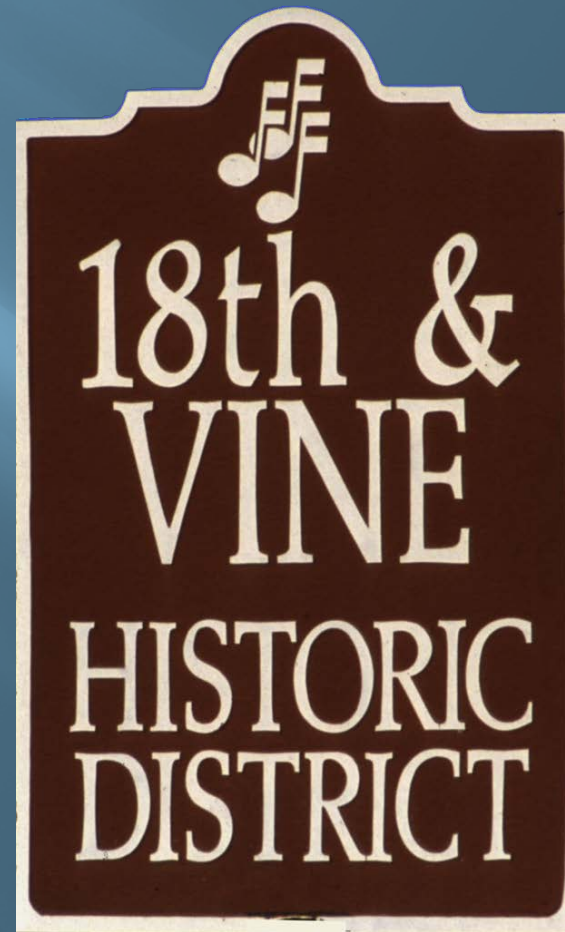


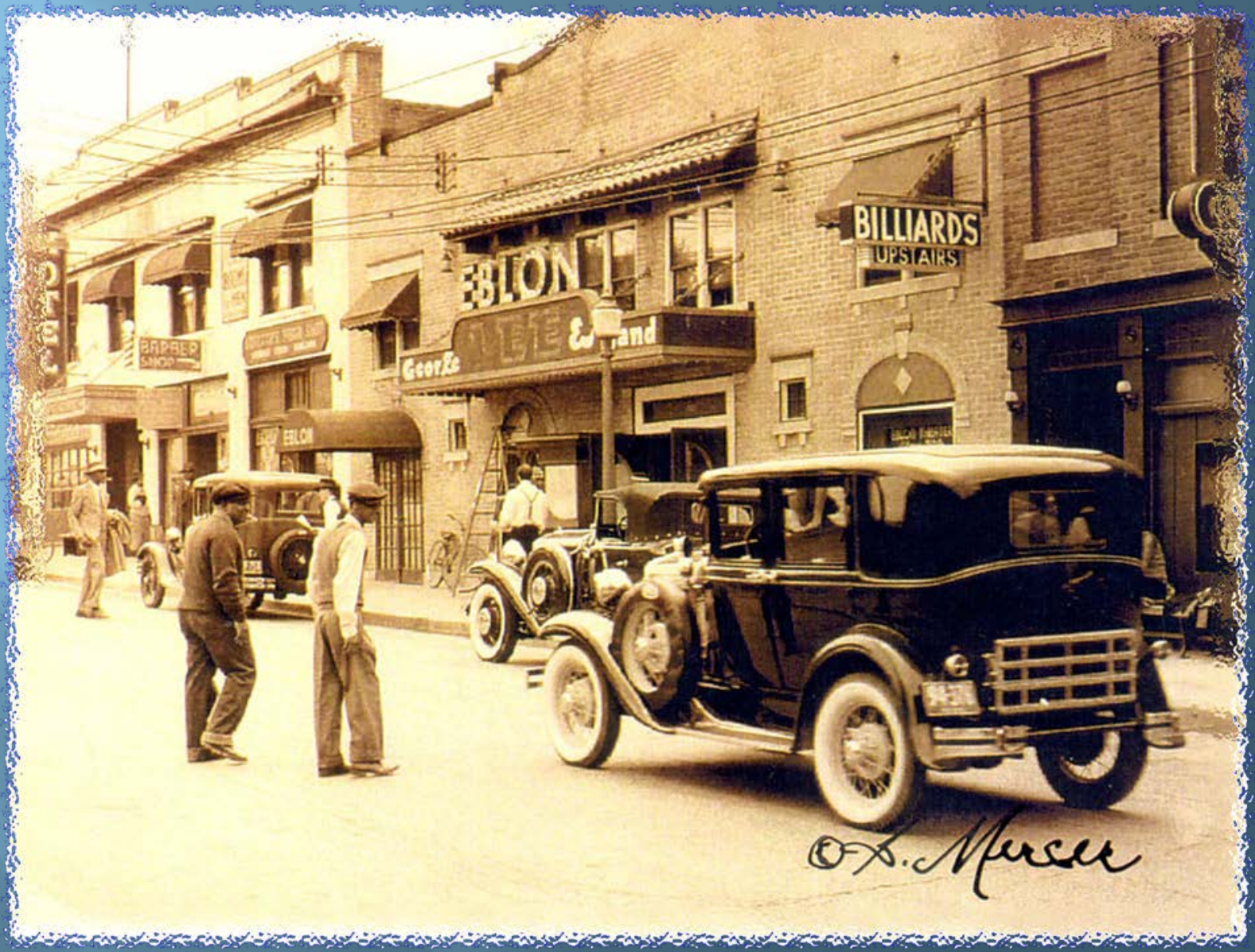
CULTURAL SUSTAINABILITY: HERITAGE PRESERVATION AND PLACE-MAKING

Presented by Denise E. Gilmore



How It All Got Started





© A. Mercer

Jazz Jazz

Cherry Blossom

Chez Paree

Fox's

Lucille's Paradise

Ol' Kentuck' Bar B-Q

The Subway Club



Kansas City Great: Jay McShann



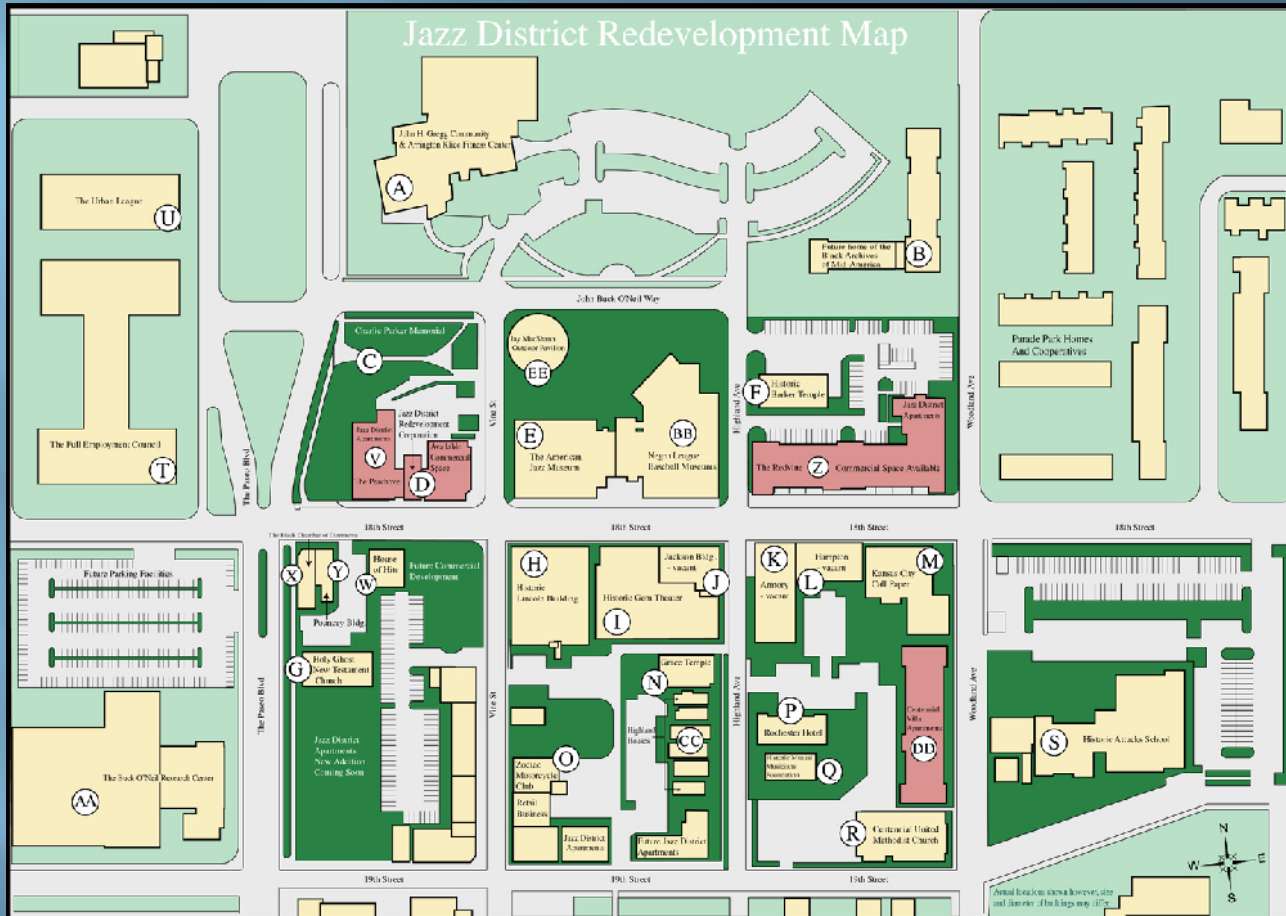
Count Basie – on 18th & Vine

Heritage Preservation- Never Forget Your Past

LOOK TO THE EXPERIENCES
OF THE PAST

ON HOW TO MOVE INTO THE
FUTURE





- A. John H. Gregg Community & Arington Klice Fitness Center
- B. Future home of the Black Archives of Mid-America
- C. Charlie Parker Memorial
- D. Jazz District Redevelopment Corporation
- E. The American Jazz Museum
- F. Historic Barker Temple
- G. Holy Ghost New Testament Church
- H. Historic Lincoln Building
- I. Historic Gem Theater
- J. Jackson Bldg. - vacant

- K. Amory - vacant
- L. Hampton - vacant
- M. Kansas City Call Paper
- N. Grace Temple
- O. Zodiac Motorcycle Club
- P. Rochester Hotel
- Q. Historic Mutual Musicians Foundation
- R. Centennial United Methodist Church
- S. Historic Atchafalps School
- T. The Full Employment Council

- U. The Urban League
- V. The Peachtree
- W. House of Hits
- X. The Black Chamber of Commerce
- Y. Pouncey Bldg.
- Z. Redvine
- AA. The Buck O'Neil Research Center
- BB. The Negro League Base Ball Museum
- CC. Highland Houses
- DD. Centennial Villa Apartments
- EE. Jay McShann Outdoor Pavilion

The American Jazz Museum

The Negro Leagues Baseball Museum



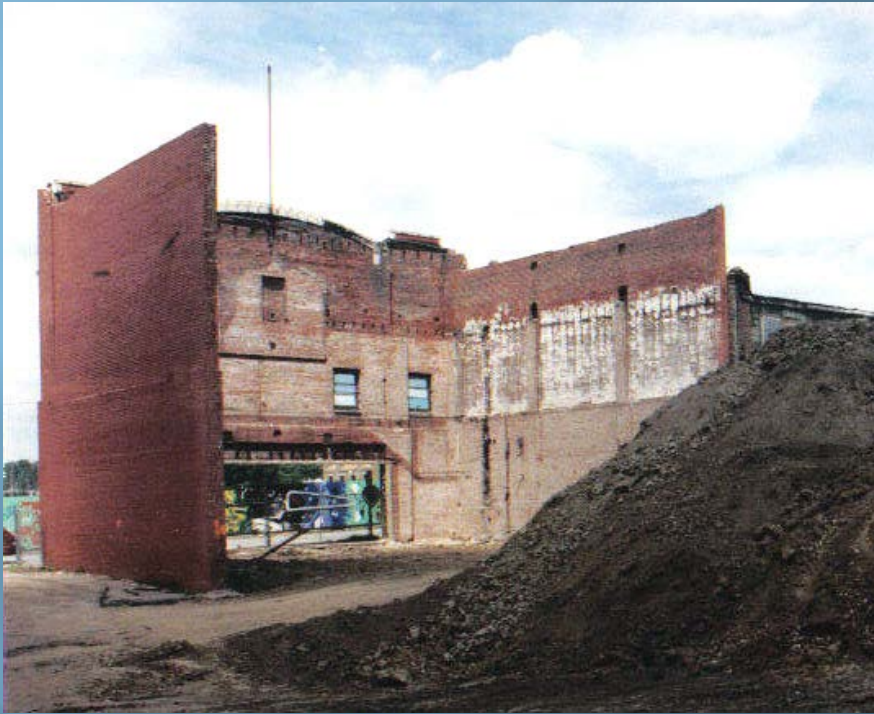


*American Jazz Museum
and Blue Room*

Jazz Storytelling at the American Jazz Museum



Reconstruction of the Historic Gem Theater



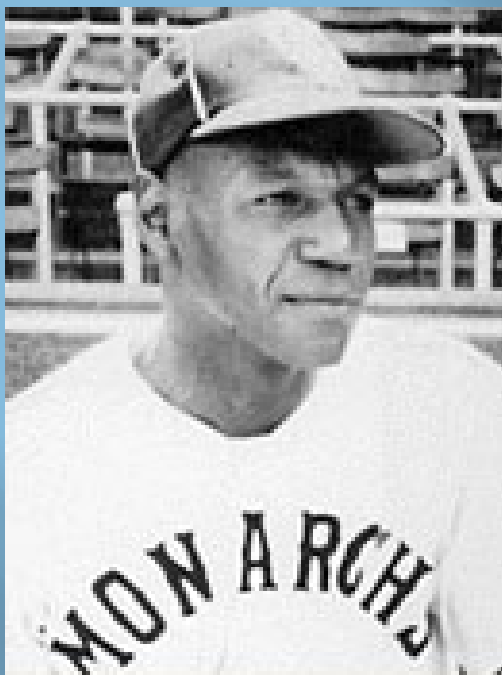


Completed – 500 Seat State-of-the-Art Theater



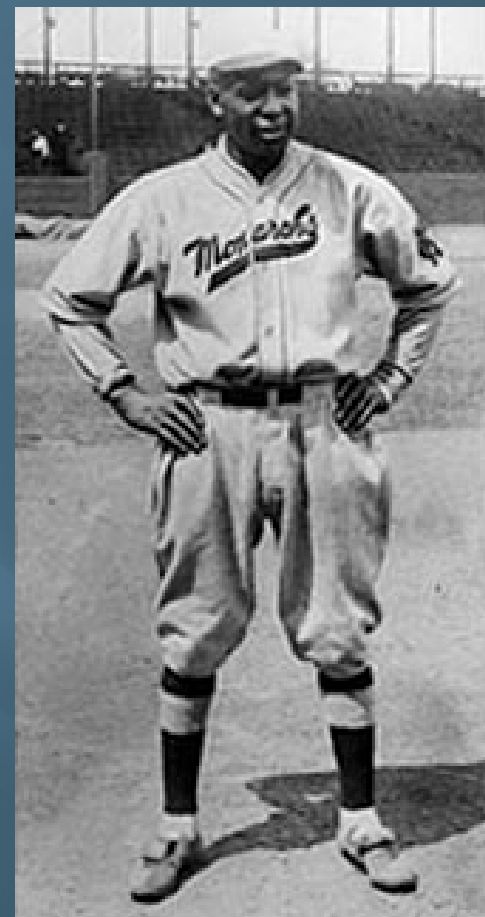
The Historic Gem Theater - Ready To Go!

Legendary Kansas City Monarchs



"Buck" O'Neil

"Satchel" Paige



"Bullet Joe" Rogan



“Coors’ Field of Legends”

Buck O'Neil Research Institute



Redevelopment Partners

- ▣ City of Kansas City Missouri
 - EDC, TIF, CDBG, Housing
- ▣ State: Missouri Housing Development Corp. , Housing Tax Credits, Historic Tax Credits
- ▣ Federal: HUD, EPA Brownfields, Historic Tax Credits
- ▣ Philanthropic and Corporate Community
 - Hallmark Family Foundation
 - Kauffman Foundation
 - Greater Kansas City Community Foundation
- ▣ Local Initiatives Support Corporation
- ▣ McCormack Baron Salazar
- ▣ Dromara Development

Redevelopment Plan

- ▣ Developer Team
 - Design/Planning
 - Legal
 - Financing
 - Environmental Assessment
 - Historic Preservation
 - Construction
- ▣ Development Incentives
 - Tax Increment Financing
 - Chapter 353 Incentive
 - Planned Industrial Expansion Authority
 - Urban Redevelopment Plan
 - Tax Credit Programs
 - Enterprise Zone
 - Brownfield Remediation

Apartments at Highland Place Groundbreaking December 2011



Apartments at Highland Place

You are cordially invited to Missouri's
2014
STATEWIDE PRESERVATION
HONOR AWARDS



**MISSOURI
PRESERVATION**
*Preserving Place And Community
For Future Generations*

Missouri State Capitol Rotunda
Jefferson City
Thursday March 6, 2014 - 11:00 a.m.
Luncheon reception following ceremony



Redevelopment will provide 22 new housing units
Listed on National Register of Historic Places

Apartments at Highland Place

6 Remaining Historic Houses, built 1880 - 1920



Historic Homes - After



Apartments at Highland Place

Historic Rochester Hotel - Before



Apartments at Highland Place

Rochester Hotel - After



Place-making Jazz District Patio Terrace Before



In Collaboration with:
City of Kansas City Missouri
Capital Improvements Management Office
Parks and Recreation Department

Place-making

Jazz District Patio Terrace

After



Charlie “Yardbird” Parker



Iconic 18th & Vine Gateway Sign

Completed 2010



Jazz District Benefits

- ▣ **Cost \$500,000 Design and Construction**
Funding Source – Public Improvement Funds
General Obligations Bonds

- ▣ **Community Gathering Place – link to other attractions**

- ▣ **Green Features – Sustainable Initiatives:**
 - **Rain Garden – absorbs rain water runoff, prevents erosion**
 - **Seating Benches – special material with water retention and filtration abilities.**
 - **Stage – constructed from recycled materials**
 - **Natural Plantings – require less watering**
 - **Pervious Pavers**

Jazz District at Night



Contact Information

**Denise E. Gilmore, President/CEO
Jazz District Redevelopment Corporation
(816) 221-1719**

dgilmore@kcjazzdistrict.org

www.kcjazzdistrict.org

Photos Courtesy of: Rex Purefoy, American Jazz Museum, Negro Leagues Baseball Museum, Pat Jordan & Associates, Don Gardner, Carlton Eley, Jazz District Redevelopment Corporation.