



The
City
Project

US EPA New Partners for Smart Growth

A Vision for Sustainable and Healthy Communities
Executive Order 12898 at 20
Title VI at 50

Robert Garcia
Founding Director and Counsel
rgarcia@cityprojectca.org

Celebrate results under:

President's Order on Environmental Justice and Health @ 20

Title VI of the Civil Rights Act of 1964 @ 50

War on Poverty @ 50

Brown v Board of Education @ 60

It takes a movement

The Civil Rights Movement

The Environmental Justice Movement

The Green Justice Movement







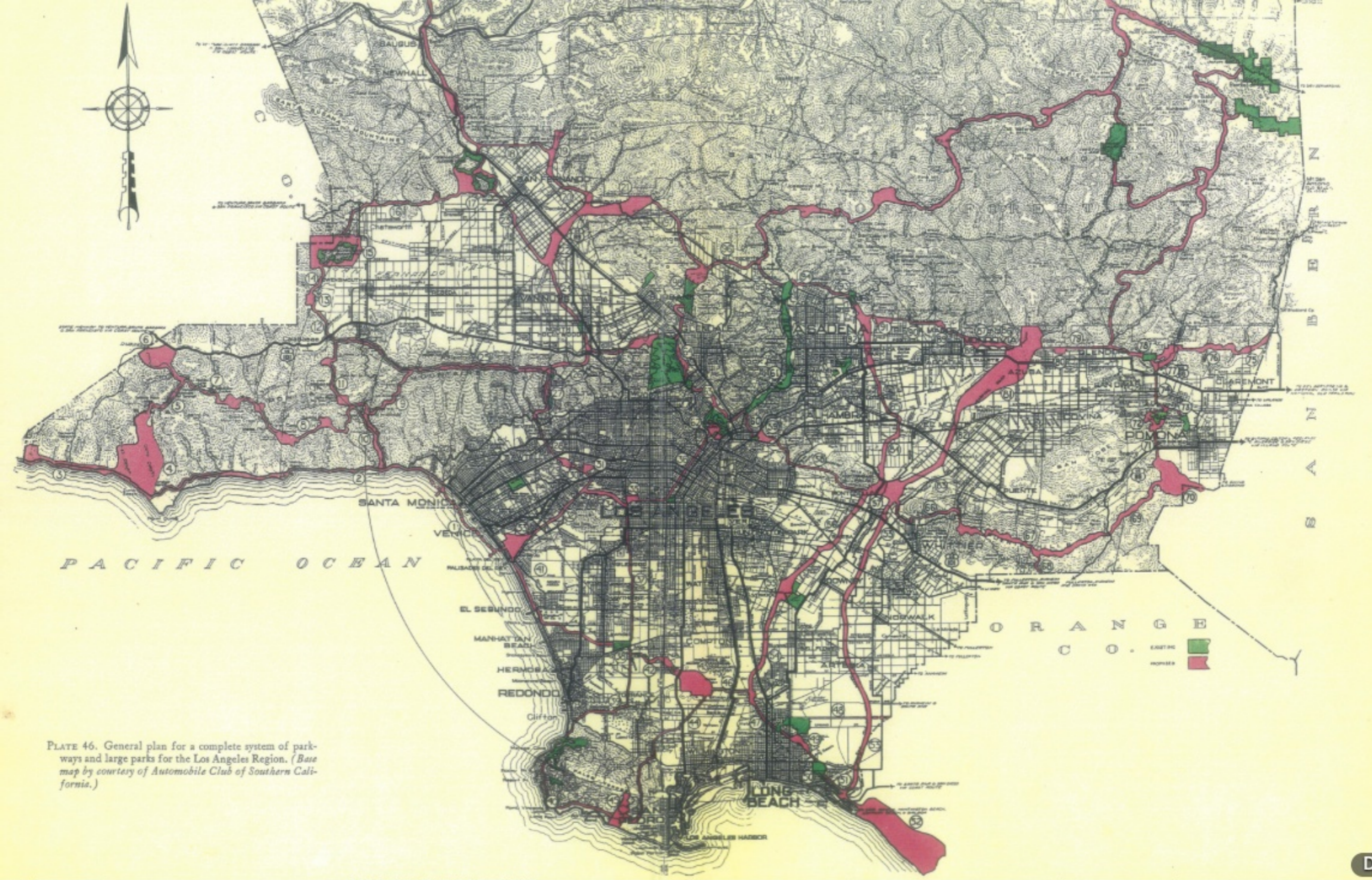


PLATE 46. General plan for a complete system of parkways and large parks for the Los Angeles Region. (Base map by courtesy of Automobile Club of Southern California.)







The Olmsted Vision

Parks, Playgrounds and Beaches for the Los Angeles Region

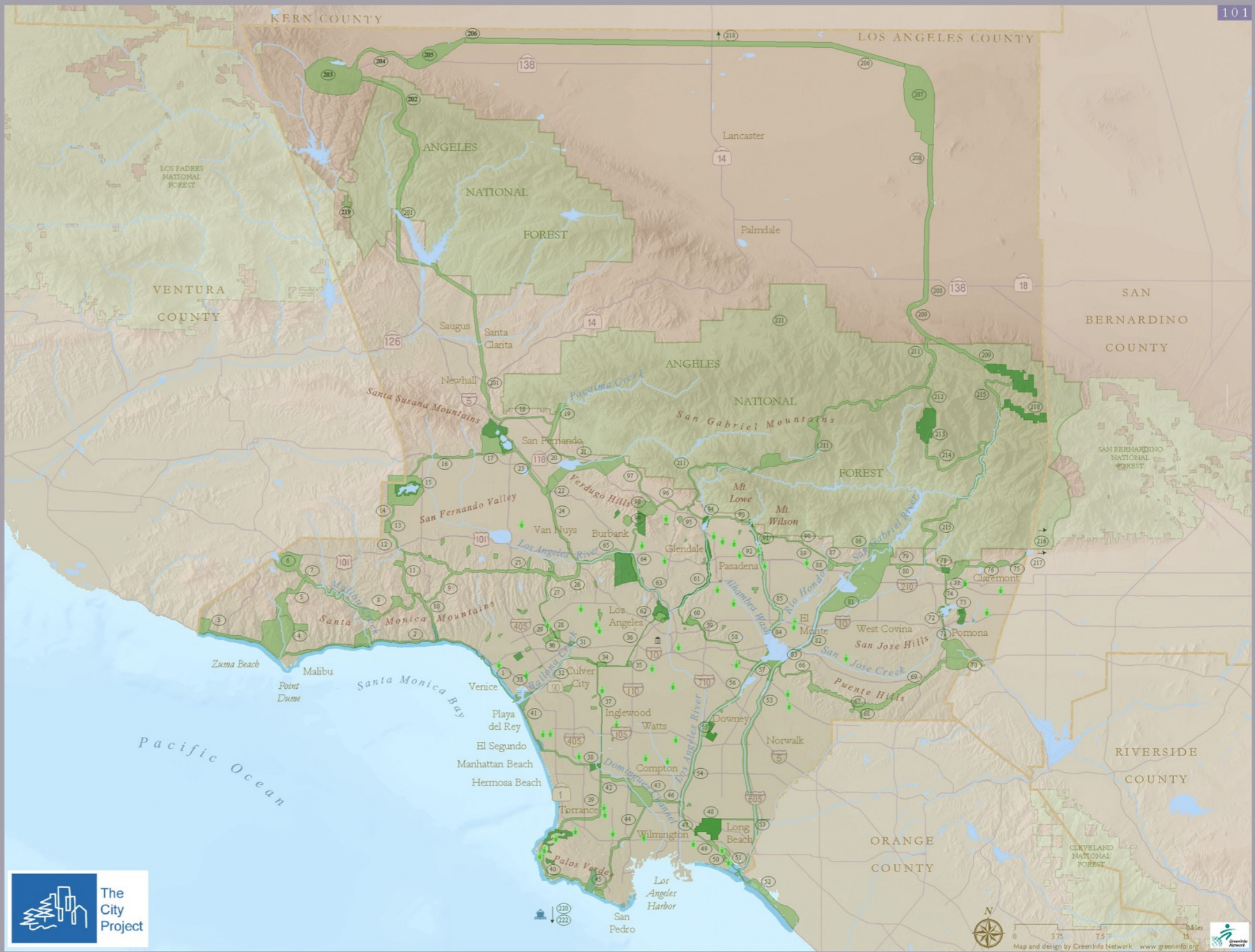
In 1930, the firm started by the sons of the great landscape architect Frederick Law Olmsted proposed a comprehensive and coherent network of parks, playgrounds, schools, beaches, forests, and transportation to promote the social, economic and environmental vitality of Los Angeles and the health of its people. According to the Olmsted Report in words that remain true today:

Continued prosperity [in Los Angeles] will depend on providing needed parks, because, with the growth of a great metropolis here, the absence of parks will make living conditions less and less attractive, less and less wholesome. . . . In so far, therefore, as the people fail to show the understanding, courage, and organizing ability necessary at this crisis, the growth of the Region will tend to strangle itself.

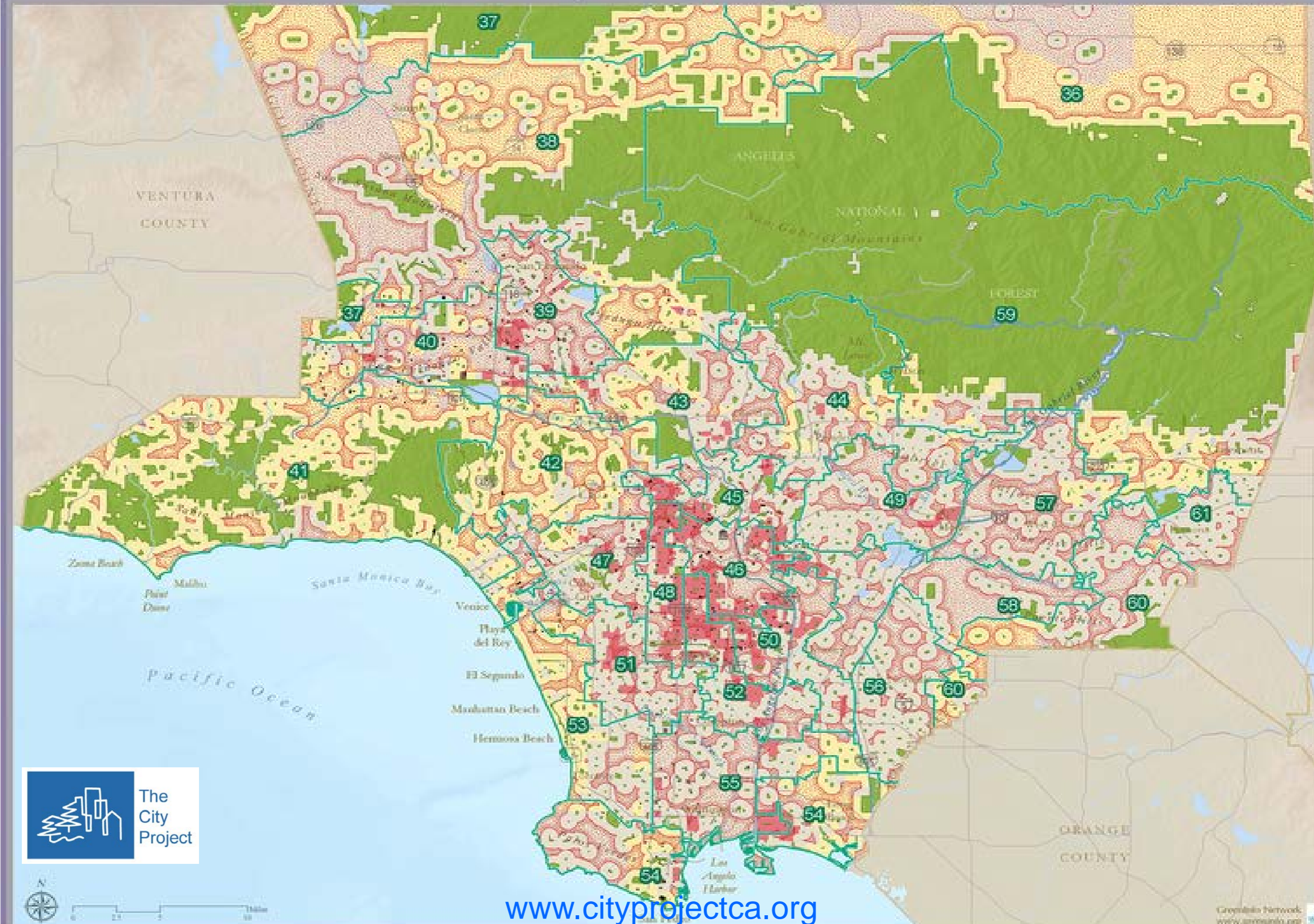
The Olmsted Report recommended 71,000 acres of parkland, and another 92,000 acres in outlying areas, with 440 miles of connecting parks and parkways, including a parkway along the Los Angeles River. The Olmsted Report proposed the joint use of parks, playgrounds, and schools to make optimal use of land and public resources, and called for the doubling of public beach frontage. Implementing the Olmsted vision would have made Los Angeles one of the most beautiful and livable regions in the world. Civic leaders killed the Report because of politics, bureaucracy, and greed in a triumph of private power over public space and social democracy. Activists today are restoring a part of the vision and the lost beauty of Los Angeles.

-  Existing parks in 1930
-  Proposed natural lands - parks, greenways, parkways, and reservations
-  Beaches
-  Angeles National Forest - 1926 Boundary
-  School with five or more acres of playground space
-  Proposed natural lands as numbered and described in the Olmsted Report

Lakes, reservoirs, rivers, marinas, and other waterways are shown in their current condition. The present day road and freeway network, and national forests besides the Angeles, are shown for reference only.

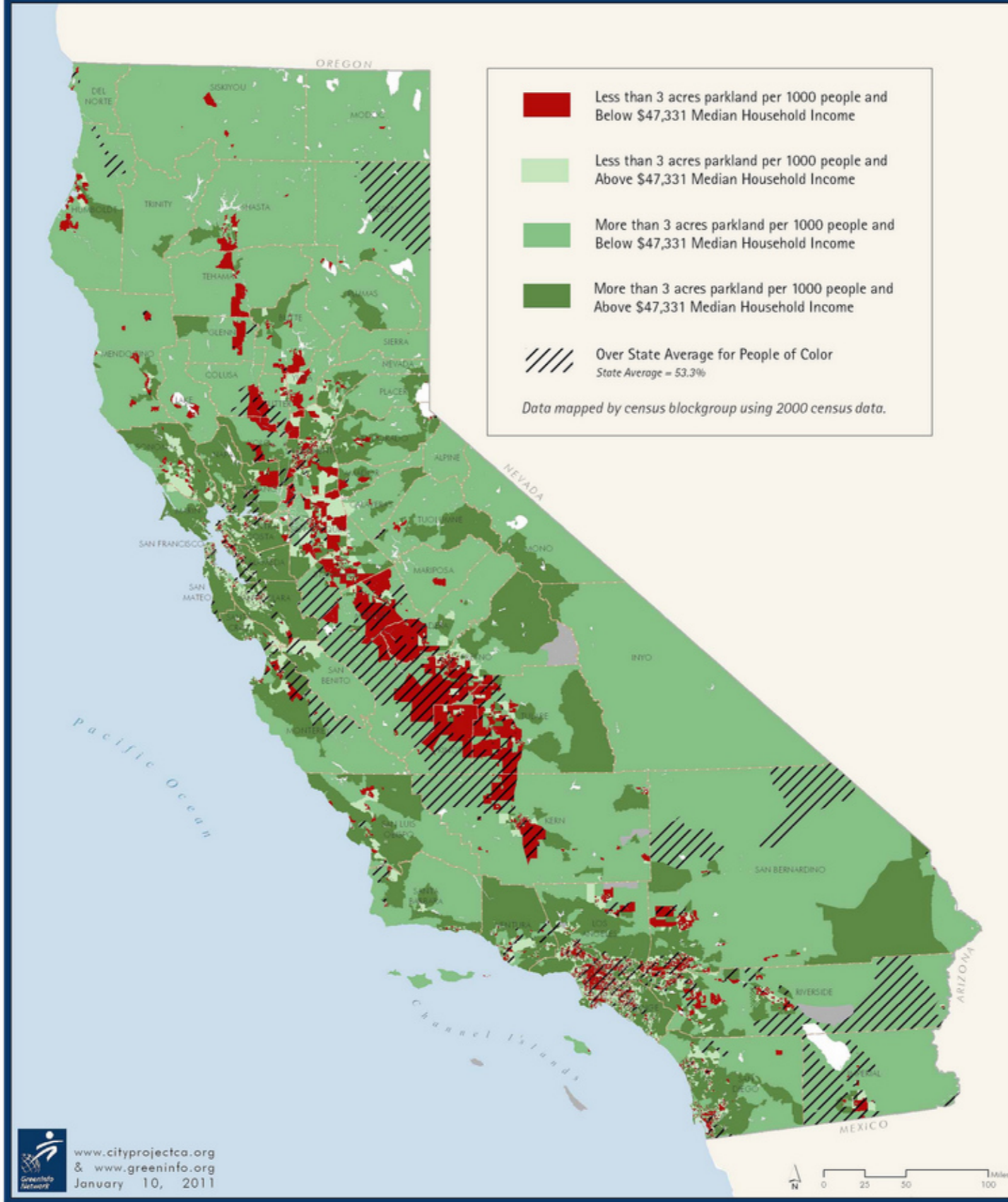


Park Access and Schools for Children of Color Living in Poverty with No Access to a Car





Park Poor, Income Poor and People of Color







“A heroic monument” and “a symbol of hope”

Los Angeles Times

The City Project with diverse allies

“organized a civil rights challenge that claimed the project was the result of discriminatory land-use policies that had long deprived minority neighborhoods of parks.”

Los Angeles Times

Secretary Andrew Cuomo US HUD

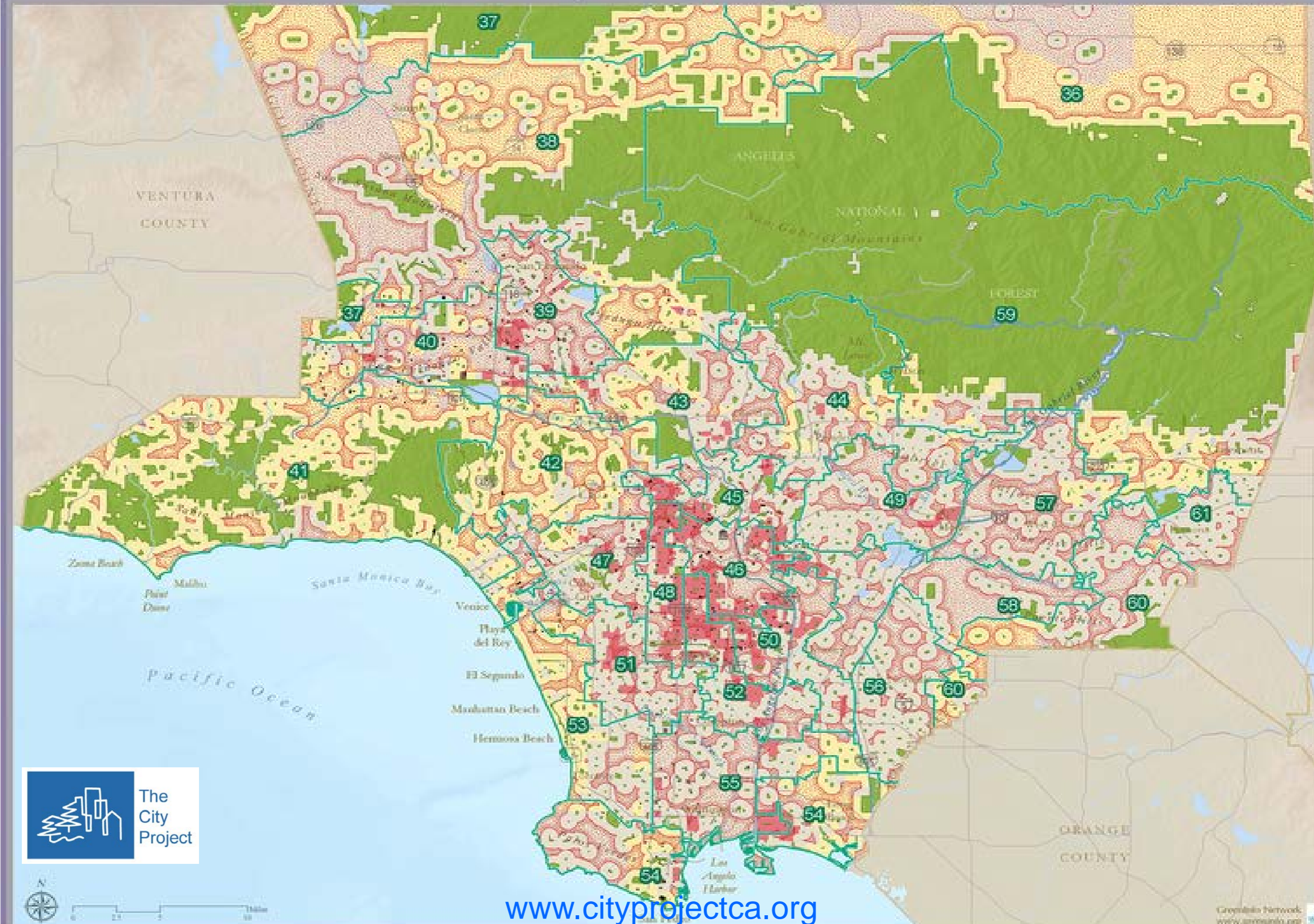
Withheld any federal subsidies for the proposed warehouse project unless there was a full environmental study that considered the park alternative and the impact on people who were of color or low income.

Citing the President's Order on Environmental Justice and Title VI

Civil rights compliance and Equity Plan positive terms

1. What do you plan to do
2. Analyze burdens and benefits on all people
3. Analyze alternatives
4. Include minority and low-income people in the planning process
5. **Implement** a plan to distribute benefits and burdens fairly

Park Access and Schools for Children of Color Living in Poverty with No Access to a Car



Unjustified Discriminatory Impacts Title VI Regulations

1. Are there numerical disparities?

Data collection and analysis, anecdotal evidence, statistical studies, GIS

2. Are the disparities justified by business necessity?

3. Are there less discriminatory alternatives to accomplish similar goals?



Intentional Discrimination Title VI Statute

Circumstantial evidence

1. Numerical impact is the starting point for analysis.
2. Is there a history of discrimination?
3. Are there departures from substantive values?
4. Are there departures from normal procedures?
5. Is there a pattern of discrimination?
6. Do decision makers know the harm they will cause











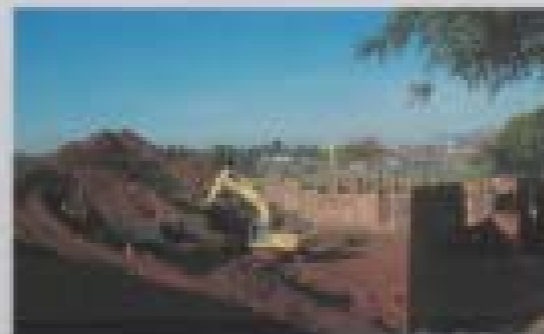




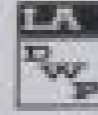
WHAT'S HAPPENING UNDER GROUND?



Two large concrete vaults have been installed to capture water from the city's mainlines. The concrete was made up of reusable units shown here during installation.



The Garvanza Park Stormwater BMP Project





Bringing the San Gabriel Mountains Closer to the People

By **Robert Garcia** | on February 9, 2012



Schools of Hope

\$27 Billion School Bonds LAUSD

Build 130 new schools & modernize hundreds more

Joint use of schools, pools, and parks

Meaningful Work

Each \$50 million = 935 annual jobs, \$43 million wages, \$130 million local business revenue

Apprenticeships; careers; contracts Women Minority Veteran Small

School Bond Oversight Committee Planning, Implementation, Ballots

Physical Education Compliance Statewide

HUD decision was a seminal act that has inspired real change –

Green justice movement creating parks on the ground

Over 1,000 acres of multibenefit green space in L.A.

\$10 Billion in state wide park bond measures

Supported by voters of color & low income voters

They passed the bonds, they need their fair share of the benefits

HUD decision was a seminal act that has inspired real change –

At the policy level other federal agencies address civil rights compliance in the planning process

Army Corps of Engineers **Los Angeles River Study** EJ Order

NPS **Healthy Parks, Healthy People US** Strategic Action Plan

NPS **San Gabriel National Recreation Area** EJ Order

NPS Santa Monica Mountains NRA citing disparities

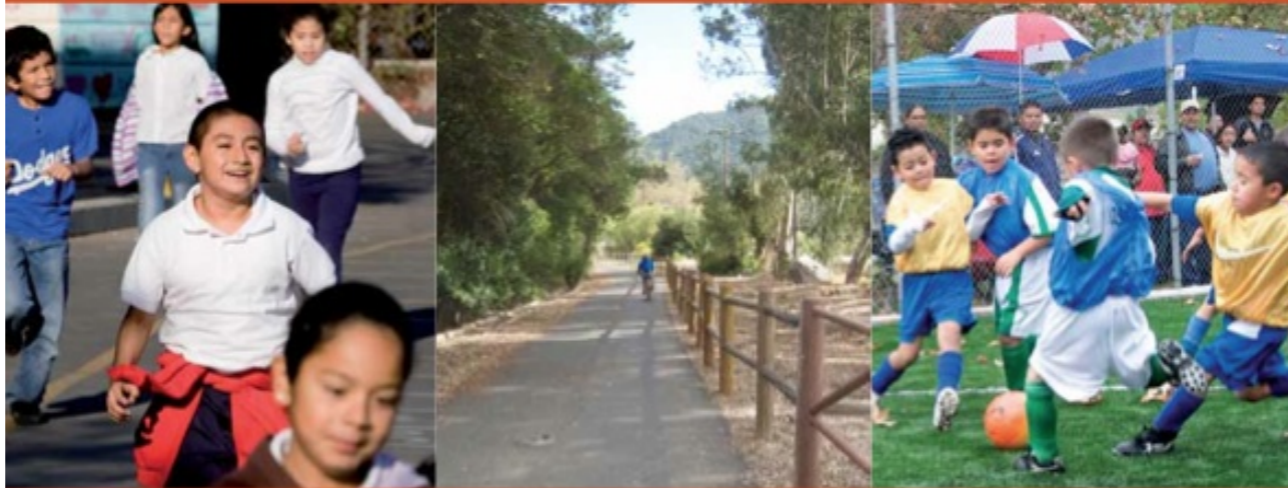
CA State Parks Forward Initiative

Green Jobs 21st Century Civilian Conservation Corps



HEALTHY PARKS, SCHOOLS AND COMMUNITIES: Mapping Green Access and Equity for Southern California

Los Angeles County | Orange County | Ventura County | San Bernardino County | San Diego County | Riverside County | Kern County | Santa Barbara County | Imperial County



Healthy Parks, Schools and Communities

Green Access and Equity for Southern California



Green Access and Equity Reports

- [Comprehensive Report for Southern California](#)
- [Los Angeles County](#)
- [Orange County](#)
- [Ventura County](#)
- [San Bernardino County](#)
- [San Diego County](#)
- [Riverside County](#)
- [Kern County](#)
- [Santa Barbara County](#)
- [Imperial County](#)

Click on a county to review the report, maps, tables, and charts.

LOS ANGELES Conserve History, Restore Nature, and Achieve Environmental Equity

MISSION: History, Memory, Science, and Education
Environmental Science, Los Angeles, California



THE HISTORY OF THE WORLD

In a world very beautiful
where the sun and moon
illuminate the face
of a magnificent
landscape.

The landscape was better than the first
the sun, the moon, the stars
illuminate the face, and the children
with their love. For when the children
bring their gifts of love, water to the water, and
the sun, the moon, the stars.

The sun, the moon, the stars
illuminate the face, and the children
with their love. For when the children
bring their gifts of love, water to the water, and
the sun, the moon, the stars.

From the first spring through the young, old, and
the young, old, and the young, old, and the young,
the sun, the moon, the stars, and the children
illuminate the face, and the children
with their love. For when the children
bring their gifts of love, water to the water, and
the sun, the moon, the stars.

The sun, the moon, the stars
illuminate the face, and the children
with their love. For when the children
bring their gifts of love, water to the water, and
the sun, the moon, the stars.

The sun, the moon, the stars
illuminate the face, and the children
with their love. For when the children
bring their gifts of love, water to the water, and
the sun, the moon, the stars.

The sun, the moon, the stars
illuminate the face, and the children
with their love. For when the children
bring their gifts of love, water to the water, and
the sun, the moon, the stars.





Values at Stake

Human Health and Development

Jobs, Contracts, Economic Vitality

Change Renters to Buyers

Conservation Values

Culture, Heritage and Spirituality

Equal Justice, Democracy, Livability for All

Civil Rights Laws

Apply to programs or activities by recipients of federal funding

Voluntary compliance is the preferred way of achieving the goals of the civil rights laws

Equal access to public resources

Prohibit intentional discrimination

Prohibit unjustified and unnecessary discriminatory impacts

Combine with other laws – e.g., environmental laws, education laws

Civil Rights Laws

Title VI of the Civil Rights Act of 1964 and Regulations

Race, color, national origin

President's Order 12898 on Environmental and Health Justice 1994

Minority, low income

Affordable Care Act section 1557

Race, color, national origin, sex, disability, age

Applies to recipients *and* federal agencies

Wellness and prevention

Parallel State Laws - California 11135 and Regulations

Civil rights compliance and Equity Plan positive terms

1. What do you plan to do
2. Analyze burdens and benefits on all people
3. Analyze alternatives
4. Include minority and low-income people in the planning process
5. **Implement** a plan to distribute benefits and burdens fairly

Unjustified Discriminatory Impacts

1. Numerical disparities -- anecdotal evidence and statistical studies
2. No business necessity justifies disparities
3. There are less discriminatory alternatives

Intentional Discrimination

Circumstantial evidence

1. Numerical impact is the starting point for analysis.
2. Is there a history of discrimination?
3. Are there departures from substantive values?
4. Are there departures from normal procedures?
5. Is there a pattern of discrimination?
6. Do decision makers know of impact

Legal, Policy and Planning Framework

Voluntary compliance with civil rights and related laws

Creative problem solving

Data collection and analysis

Coalition building grass roots to tree tops

Multidisciplinary research and analysis

Planning and administrative process

Access to justice through the courts

Civic Engagement

Full and fair information, data collection, analysis

Full and fair community participation



The
City
Project

Equal Justice, Democracy, and Livability for All!

Robert Garcia
Founding Director and Counsel
rgarcia@cityprojectca.org

Donations Are Tax Deductible!