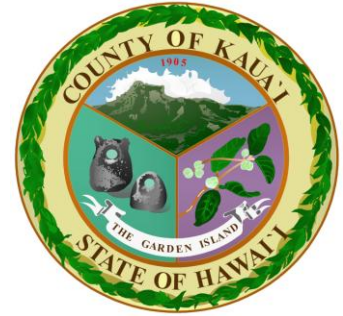
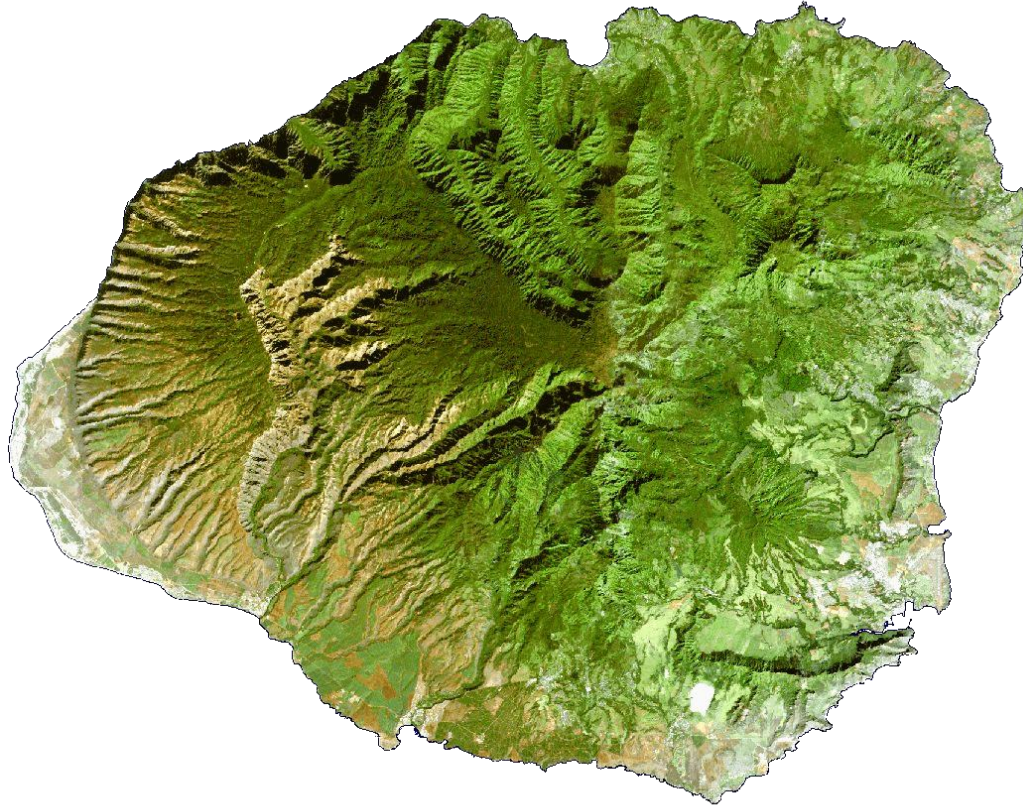


# Kaua'i's Complete Streets Journey



Kaua'i Speakers:

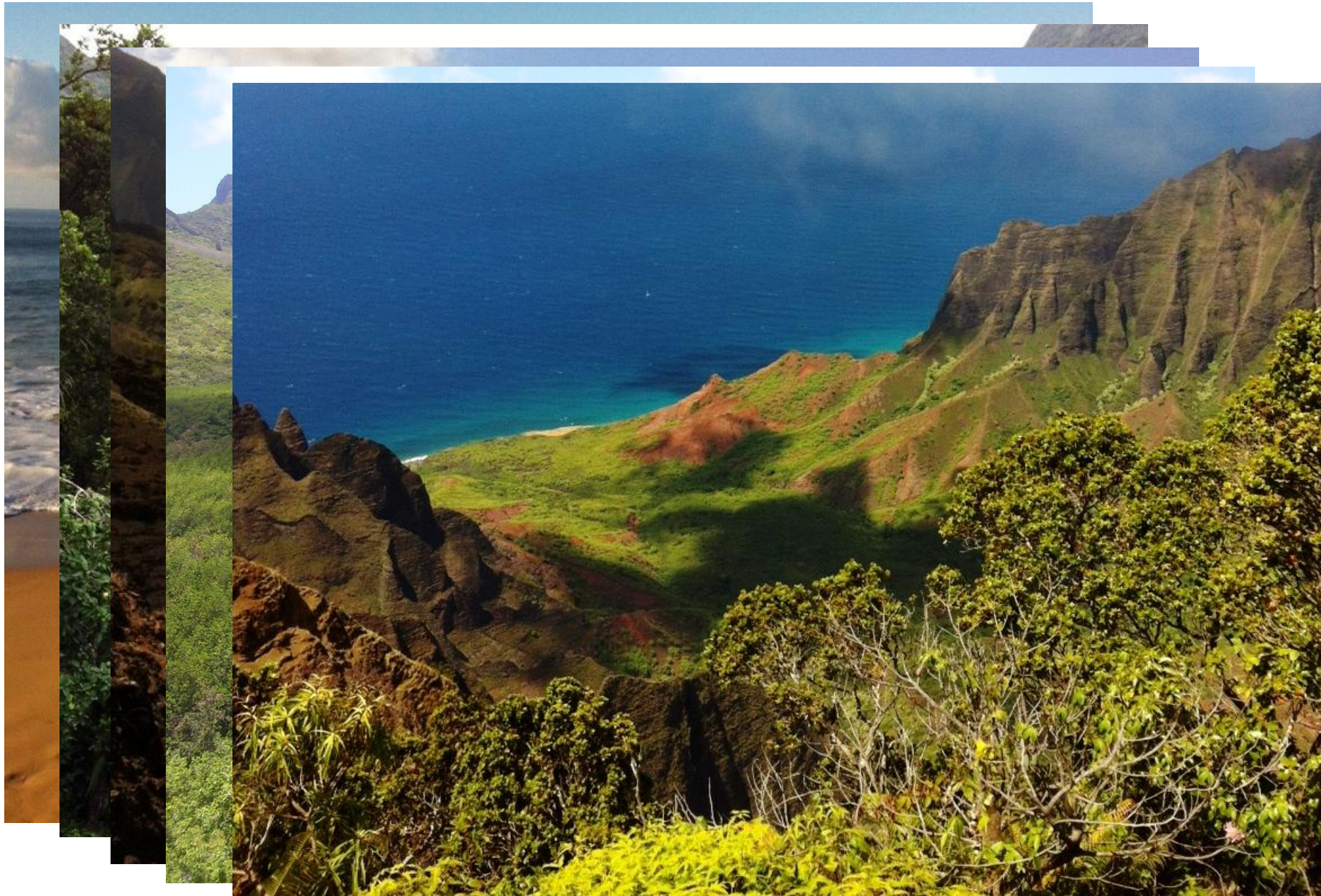
**Bev Brody**, Director, Get Fit Kaua'i

**Lee Steinmetz**, Transportation Planner, County of Kaua'i Planning Department

**Lyle Tabata**, Deputy County Engineer, County of Kaua'i Department of Public Works

**Marie Williams**, Long Range Planner, County of Kaua'i Planning Department

# Kaua'i County Introduction



# Absent Pedestrian Facilities



# Impact of Growth on Car-centric Networks



2010/11

2011/12

2012/13

2013/14



COUNTY COUNCIL  
COUNTY OF KAUAI

## Resolution

A RESOLUTION ESTABLISHING A COMPLETE STREETS POLICY FOR THE COUNTY OF KAUAI

WHEREAS, Complete Streets is a set of design principles that promotes safe streets for pedestrians, bicyclists, motorists, and public transportation users of all ages and abilities; and

WHEREAS, streets that accommodate multiple travel modes, and include safe and ample space for pedestrians, bicyclists, and public transportation users, are more conducive to community vitality and the efficient movement of people than streets designed primarily to move automobiles; and

## Policy

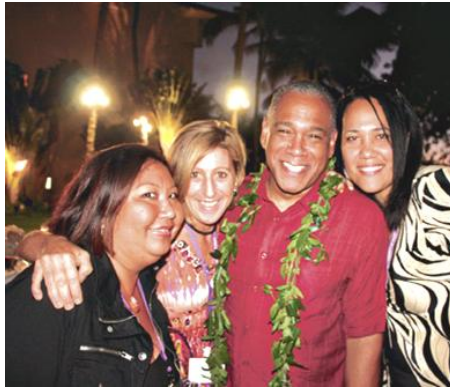


## Partnerships

# A Complete Streets Blitz!



**Training with Paul Zykofsky  
April 2011**



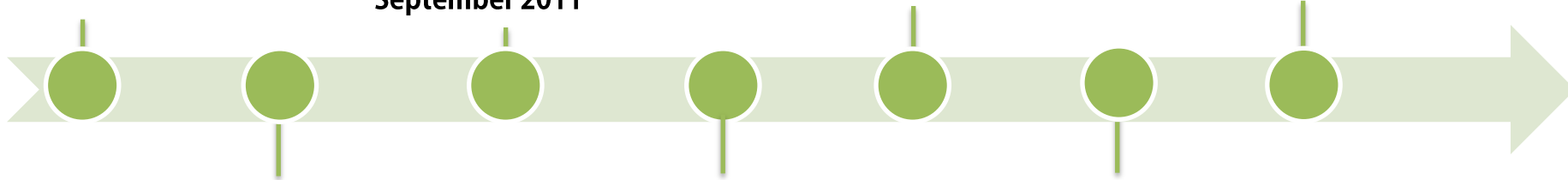
**Healthy Communities  
Conference  
September 2011**



**Training with Dan Burden  
April 2012**



**Walk Audit Training  
January 2013**



**April 2011  
Complete Streets Meeting**



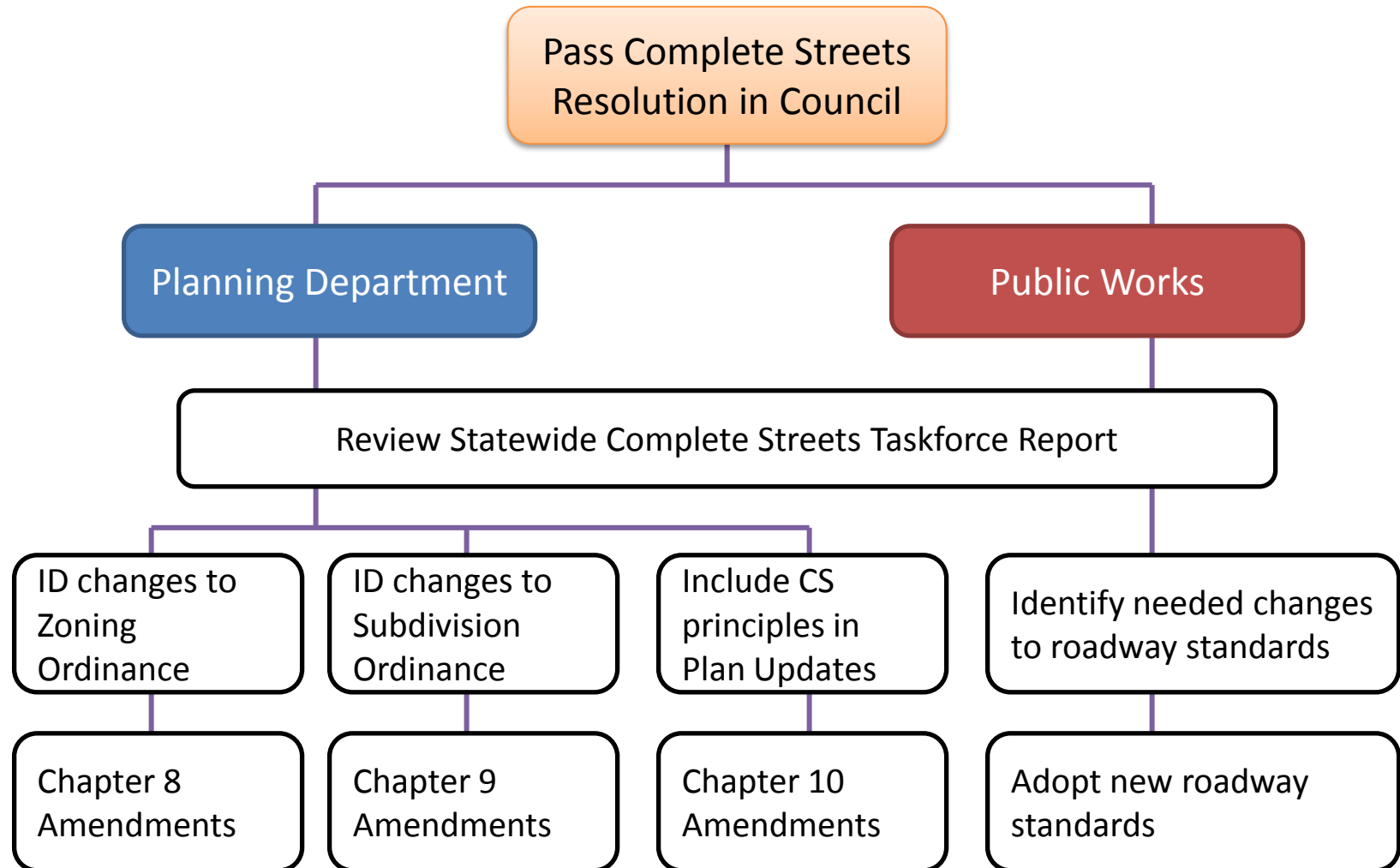
**October 2011  
Implementation with  
Michael Moule**



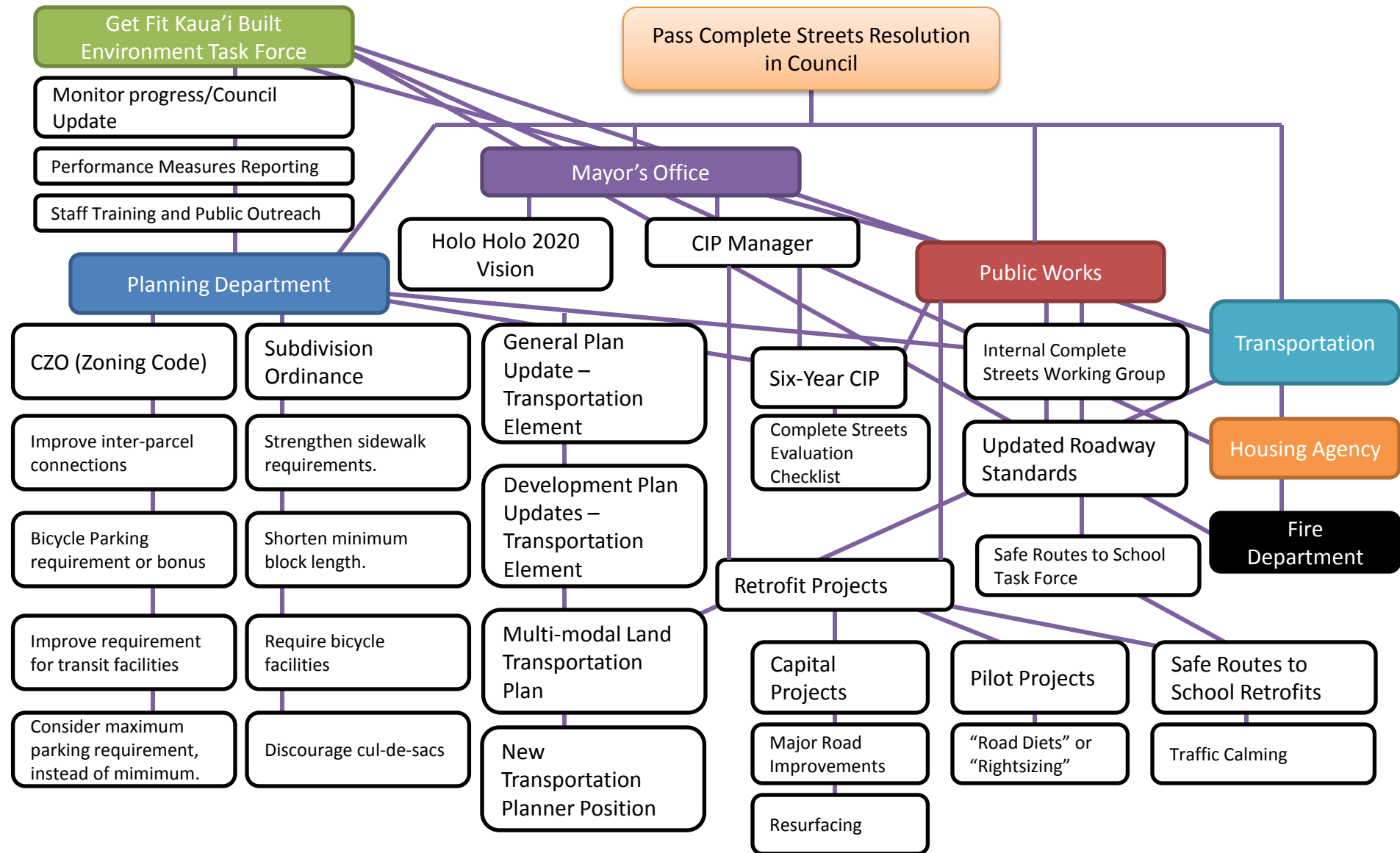
**September 2012  
Workshop with Gary Toth**



# The Initial Plan



# What Reality Looked Like



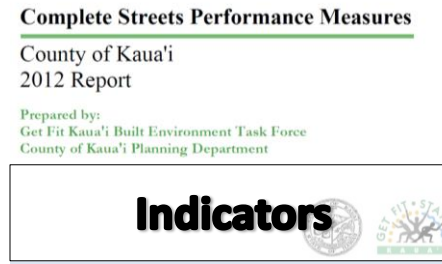
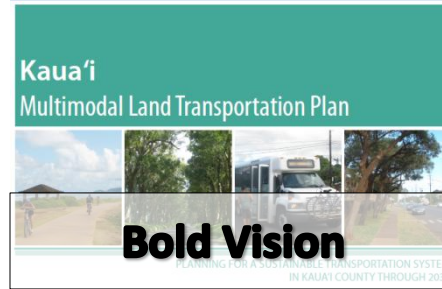


# 2010/11

# 2011/12

# 2012/13

# 2013/14



COUNTY COUNCIL  
COUNTY OF KAUAI

**Resolution** No. 2010-48, Draft 1

A RESOLUTION ESTABLISHING A COMPLETE STREETS POLICY  
FOR THE COUNTY OF KAUAI

WHEREAS, Complete Streets is a set of design principles that promotes safe  
pedestrians, bicyclists, motorists, and public transportation users of all  
ages and abilities; and

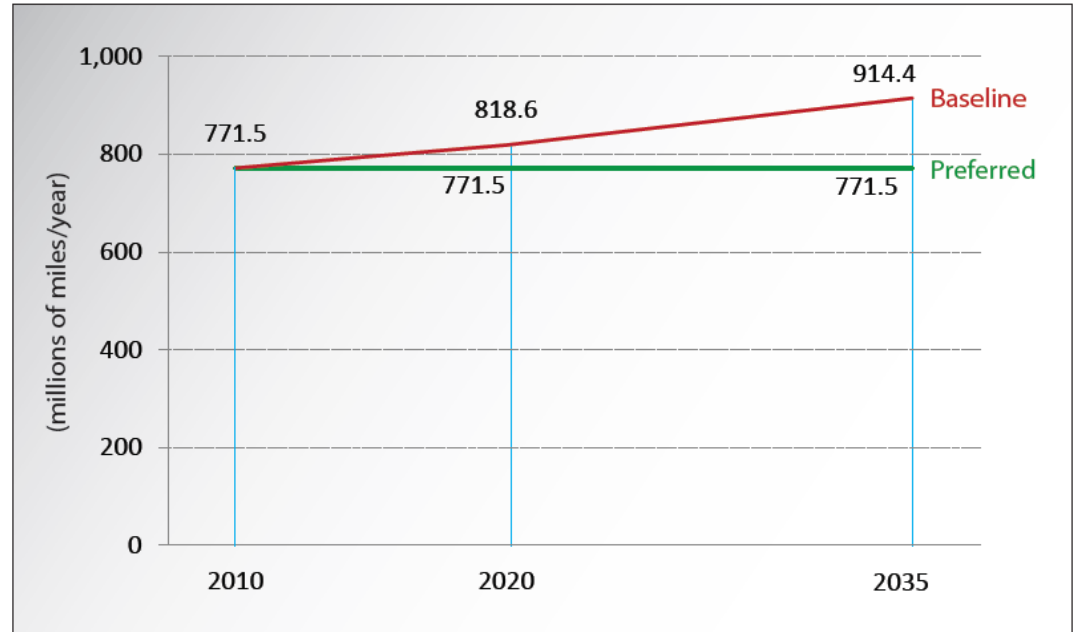
WHEREAS, streets that accommodate multiple travel modes, and  
include safe and ample space for pedestrians, bicyclists, and public transportation  
users, are more conducive to community living and the efficient movement of people  
than streets designed primarily to move automobiles; and

**Policy**



# A Bold Plan

## Annual VMT (Vehicle Miles Traveled)



Kaua'i

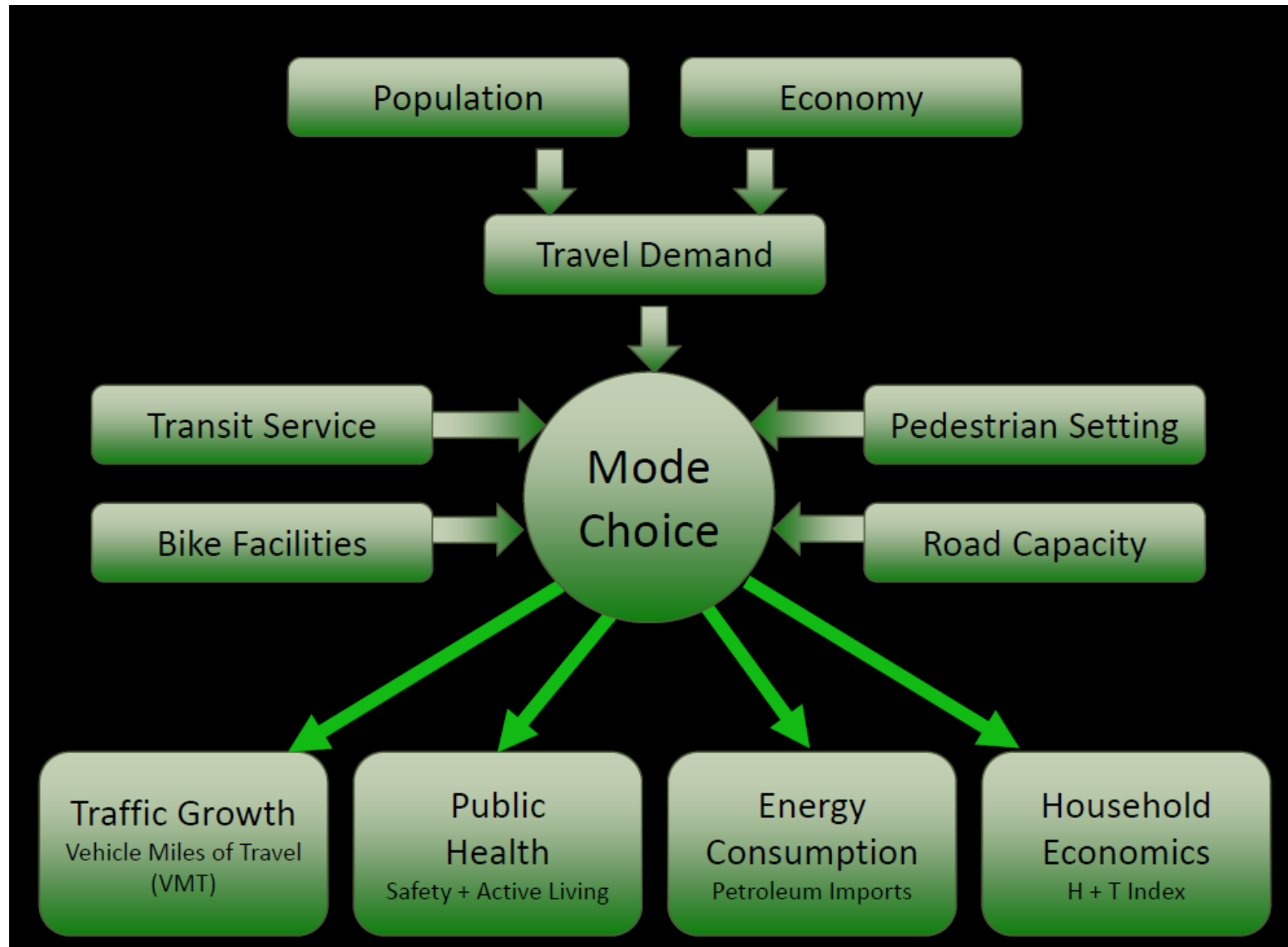
Multimodal Land Transportation Plan



**Consultant:**  
**Jim Charlier**  
**Charlier Associates**

PLANNING FOR A SUSTAINABLE TRANSPORTATION SYSTEM  
IN KAUAI COUNTY THROUGH 2035

# Accommodating Growth via Mode Shift



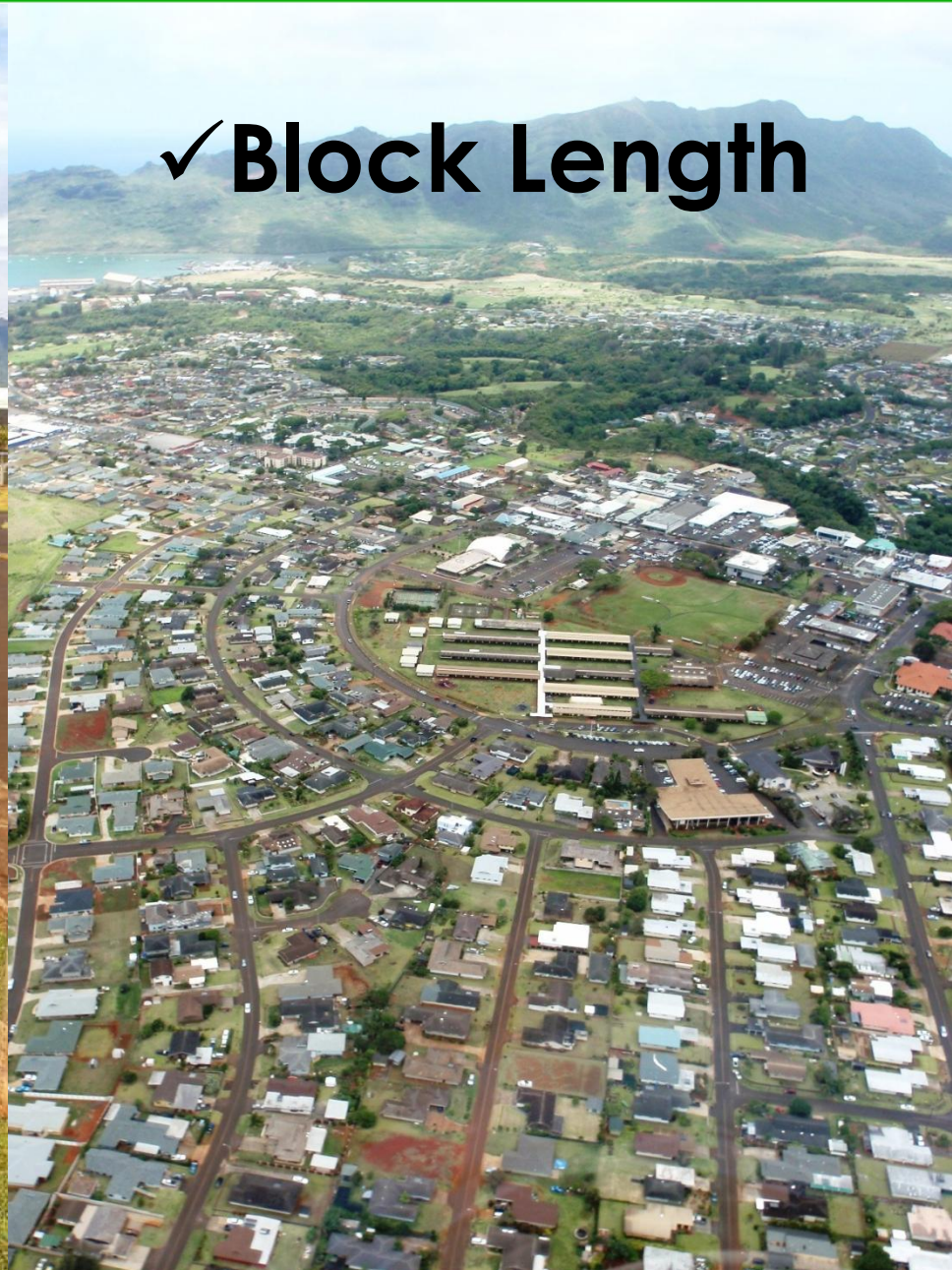
*Courtesy of Jim Charlier*

# Implementing Code Change

✓ Sidewalks



✓ Block Length



# Celebrating Every Success

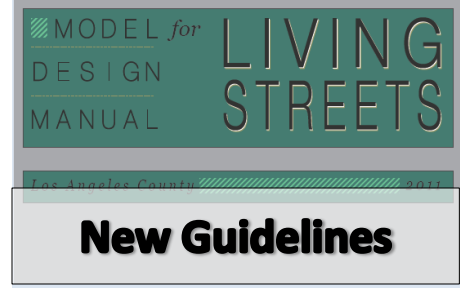
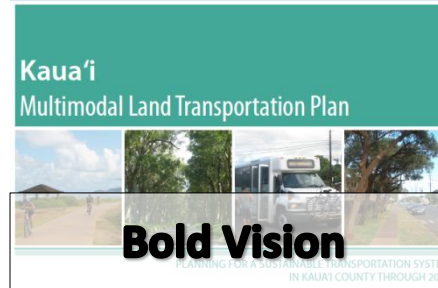


# 2010/11

# 2011/12

# 2012/13

# 2013/14



COUNTY COUNCIL  
COUNTY OF KAUAI

**Resolution** No. 2010-48, Draft 1

A RESOLUTION ESTABLISHING A COMPLETE STREETS POLICY FOR THE COUNTY OF KAUAI

WHEREAS, Complete Streets is a set of design principles that promotes safe streets for pedestrians, bicyclists, motorists, and public transportation users of all ages and abilities; and

WHEREAS, streets that accommodate multiple travel modes, and include safe and ample space for pedestrians, bicyclists, and public transportation users, are more conducive to community vitality and the efficient movement of people than streets designed primarily to move automobiles; and

**Policy**



# Partnerships Made Our Progress Possible



 **KAUAI  
FESTIVALS**  
mixed plate of fun!



Like us on Facebook:  
[www.facebook.com/kauaiplanning](http://www.facebook.com/kauaiplanning)