

SafeRoutes

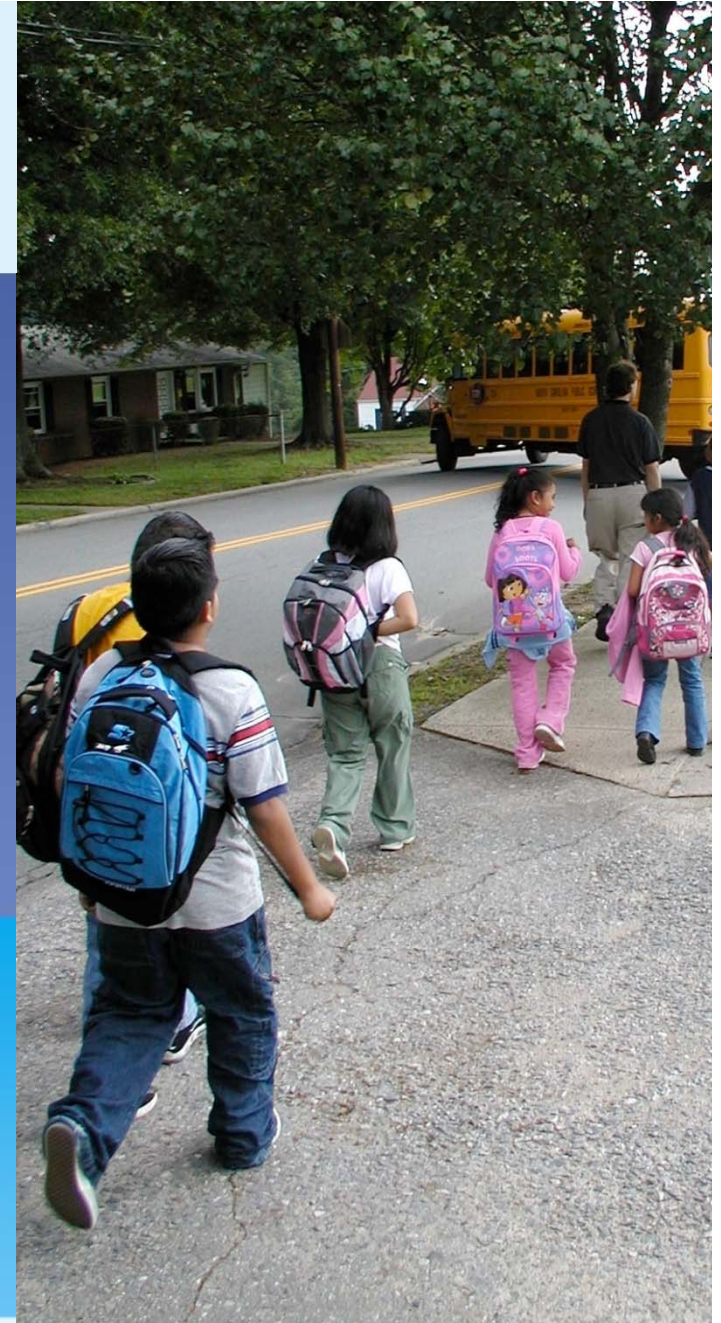
National Center for Safe Routes to School



National Safe Routes to School Program: Initial Results

Lauren Marchetti
National Center for Safe Routes to School

9th Annual New Partners for Smart Growth
Thursday, February 4, 2010
Seattle, WA



August 2005, SAFETEA-LU was passed.

This law designated \$612 million in Federal transportation funds, distributed through each State's Department of Transportation to:

- enable and encourage children to walk and bicycle to school;
- improve the safety of children walking and bicycling to school; and
- facilitate projects and activities that will reduce traffic, fuel consumption, and air pollution near schools.

Elements of Safe Routes to School programs

- Education
- Encouragement
- Enforcement
- Engineering
- Evaluation



Safe Routes to School Programs are part of the solution...

- ... to improve unsafe walking and biking conditions
- ... to increase physical activity
- ... to improve poor air quality by reducing vehicle emissions
- ... to create walking and bicycling options for an array of needs
- ... to reduce transportation costs for schools



The Good, the Bad, and the Ugly



Fewer kids are biking and walking More parents are driving



Parents driving



Parents driving their children to school account for 20%-25% of morning rush hour traffic.

(Parisi Associates; Melbourne Department of Infrastructure)

The consequences of *this*...



...instead of *this* can be alarming.



School siting issues: A generation ago

- Small (average of 127 students)*
- Located in community centers
- 42% of kids walked or biked to school**

(*EPA, 2003; **1969 Nationwide Personal Transportation Survey)



School siting issues: Today



- Mega-schools (average 538 students)
- 44% of secondary schools have 1500+ students
- Schools located on 10 to 30+ acres fringe land
- Lowest-cost construction

(U.S. Department of Education, 2005-2006)

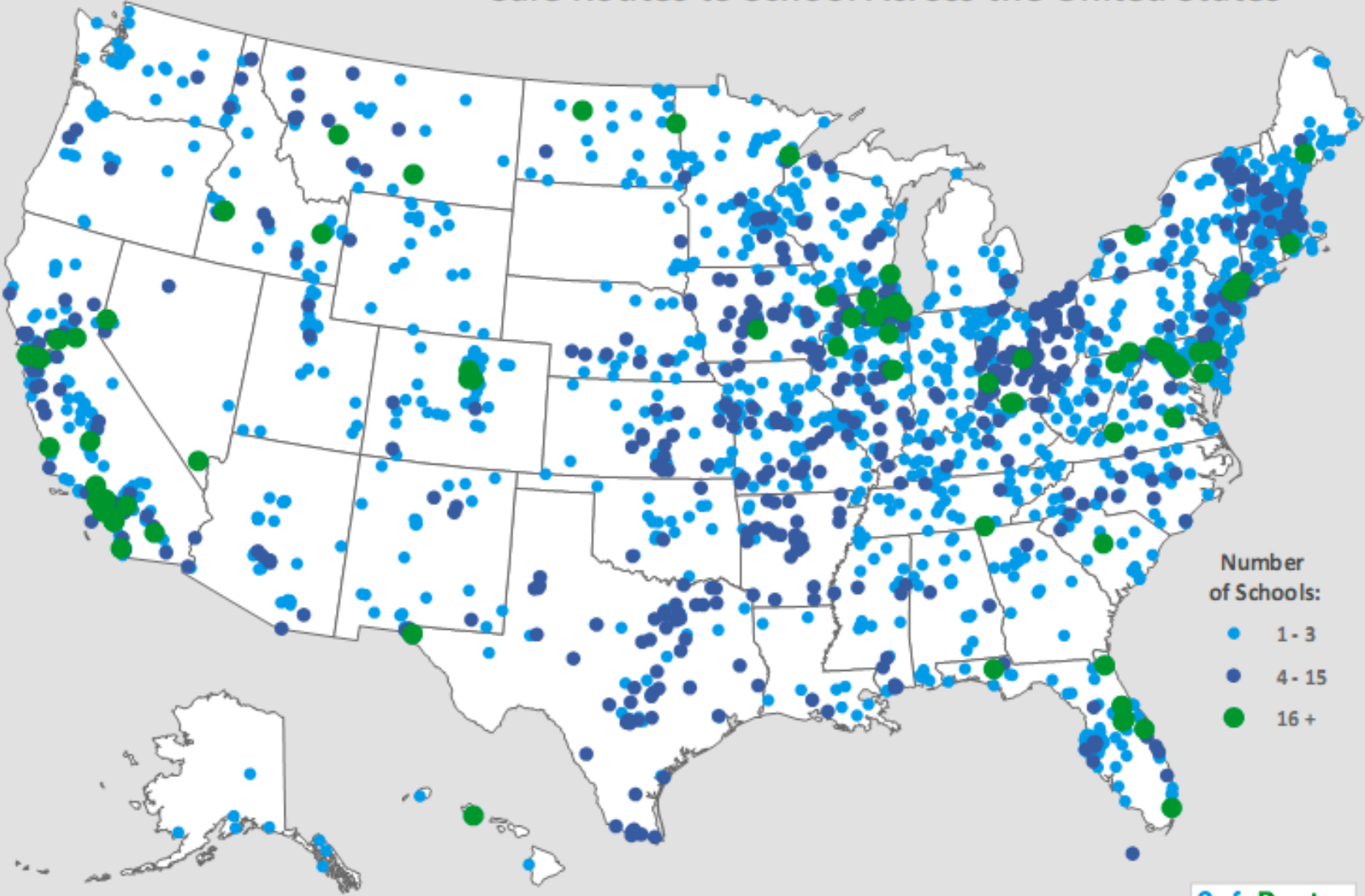
Current Status

- At least 6,489 schools are participating
- All states and DC have announced funding
- Approximately \$427 million has been announced (72% of apportioned funds available)
- 54 percent of states had made awards for their third, fourth or fifth funding cycles
- 39 percent of applications are selected for funding

\$27.8 million was rescinded September 30, 2009.

\$26.1 million was apportioned through a 79-day Continuing Resolution that expired on December 18, 2009.

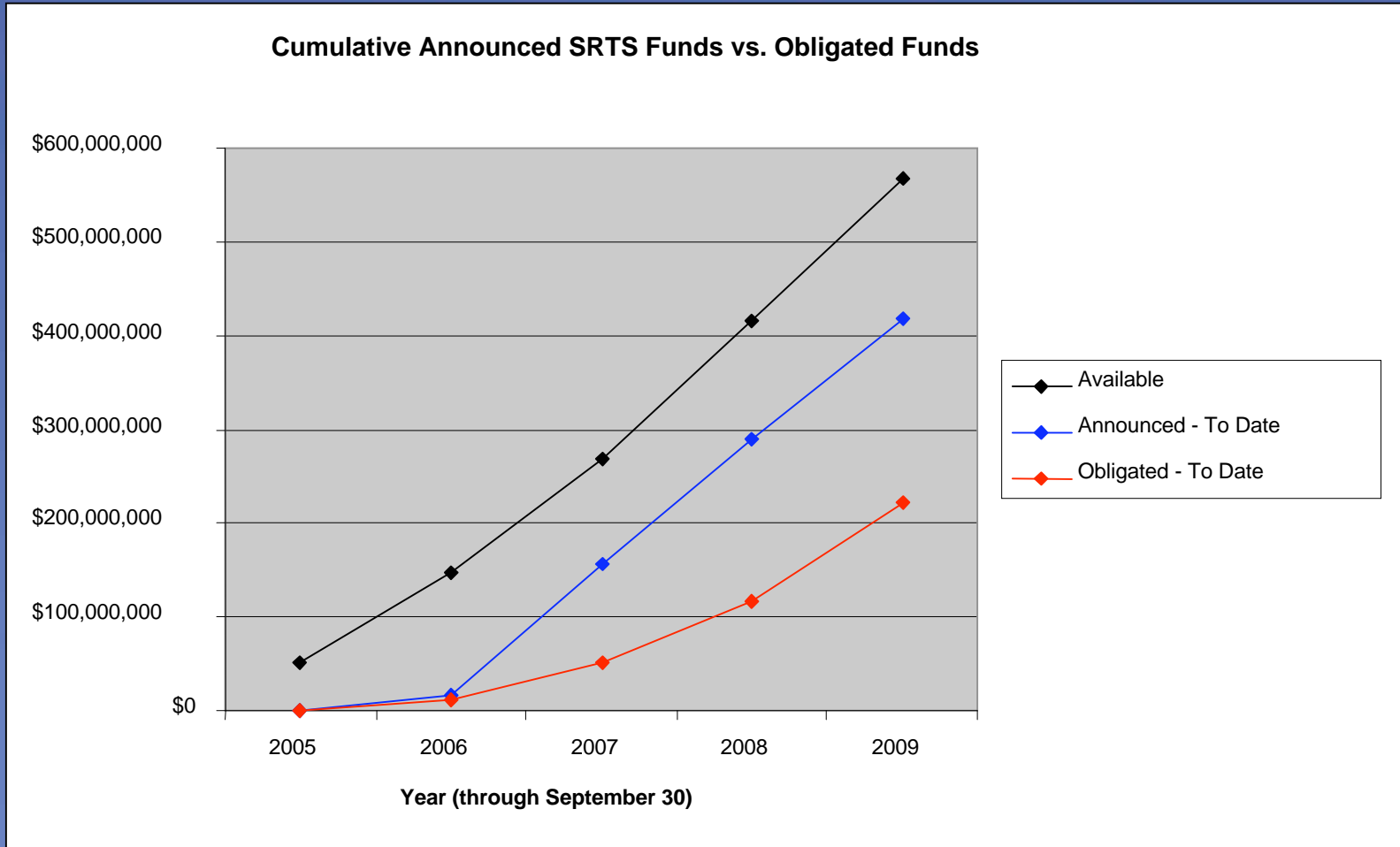
Safe Routes to School Across the United States



Locations above represent more than 6,489 schools for which SRTS funds have been announced, according to information reported to the National Center for Safe Routes to School as of December 31, 2009. To see details on SRTS projects, please go to www.saferoutesinfo.org/project_list.



Start up takes time



Project Type	Number	%
Infrastructure	2314	40.5%
Non-infrastructure	1691	29.6%
Combined	911	16.0%
Planning/Start-up	556	9.7%
Other	239	4.2%
Total	5711	

Key questions for Congress to ask:

Is the program working?

Was the money well spent?

So Congress can decide:

Should the program be continued?

Are changes needed to improve it?

Evaluation and Research Program

- SRTS Data Reporting System
 - Standardized Data Collection Forms
 - Data Reporting Support
- Safe Routes to School Program Database
- A research project to examine safety outcomes at the national level.
- A research project to identify effectiveness of specific strategies.
 - CDC and EPA expert panel on measuring health and environmental health

Data Collected

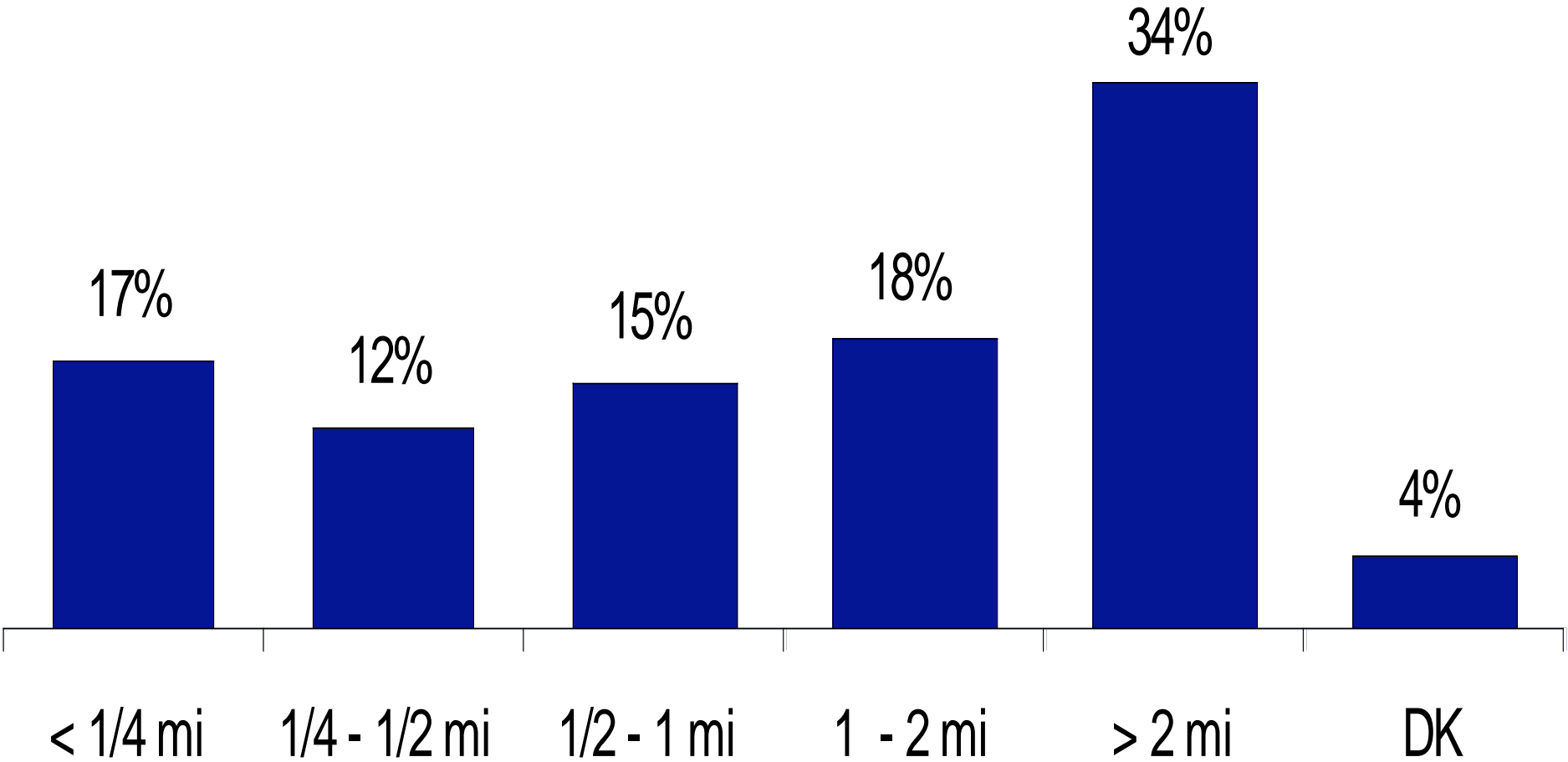
- March 2007 to May 2009
- 1st submission of data
- 130,684 Parent Surveys
 - 1,266 schools
 - 47 states
- 34,546 classrooms
 - 2.4M trips
 - 1,308 schools
 - 46 states



Parent Survey Sample Characteristics



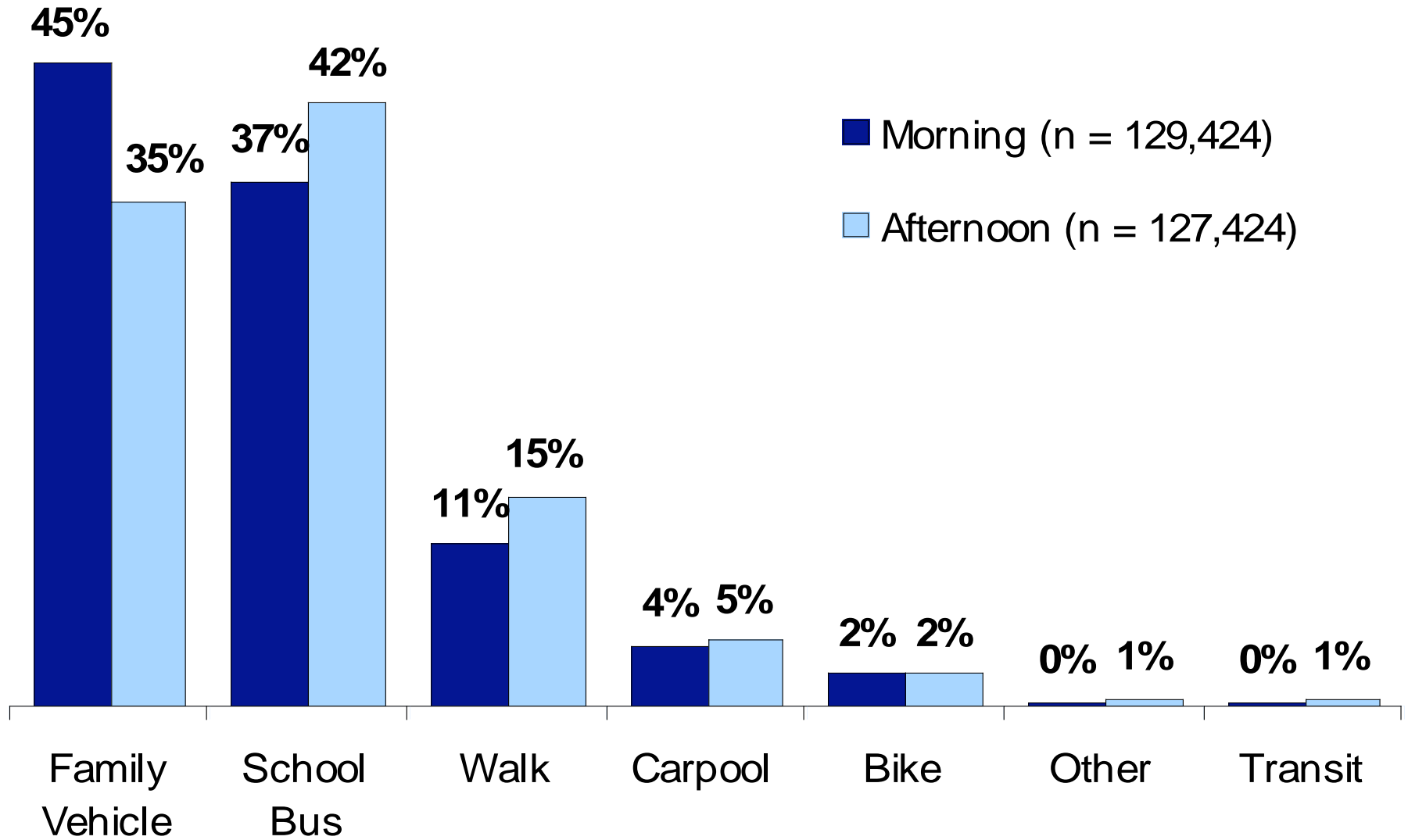
Distance Child Lives from School



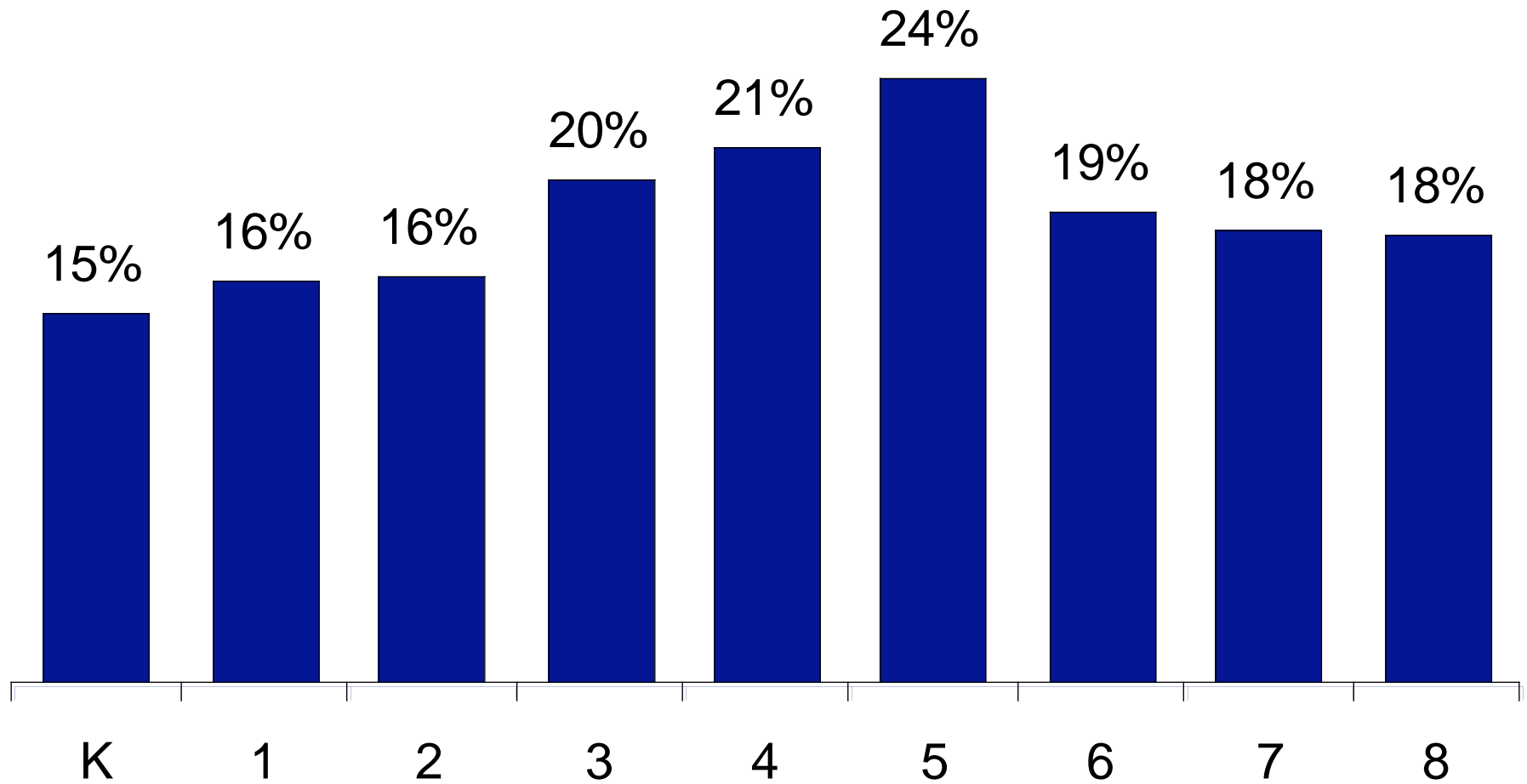
(n = 127,095)



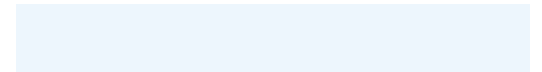
School Arrival and Departure Modes



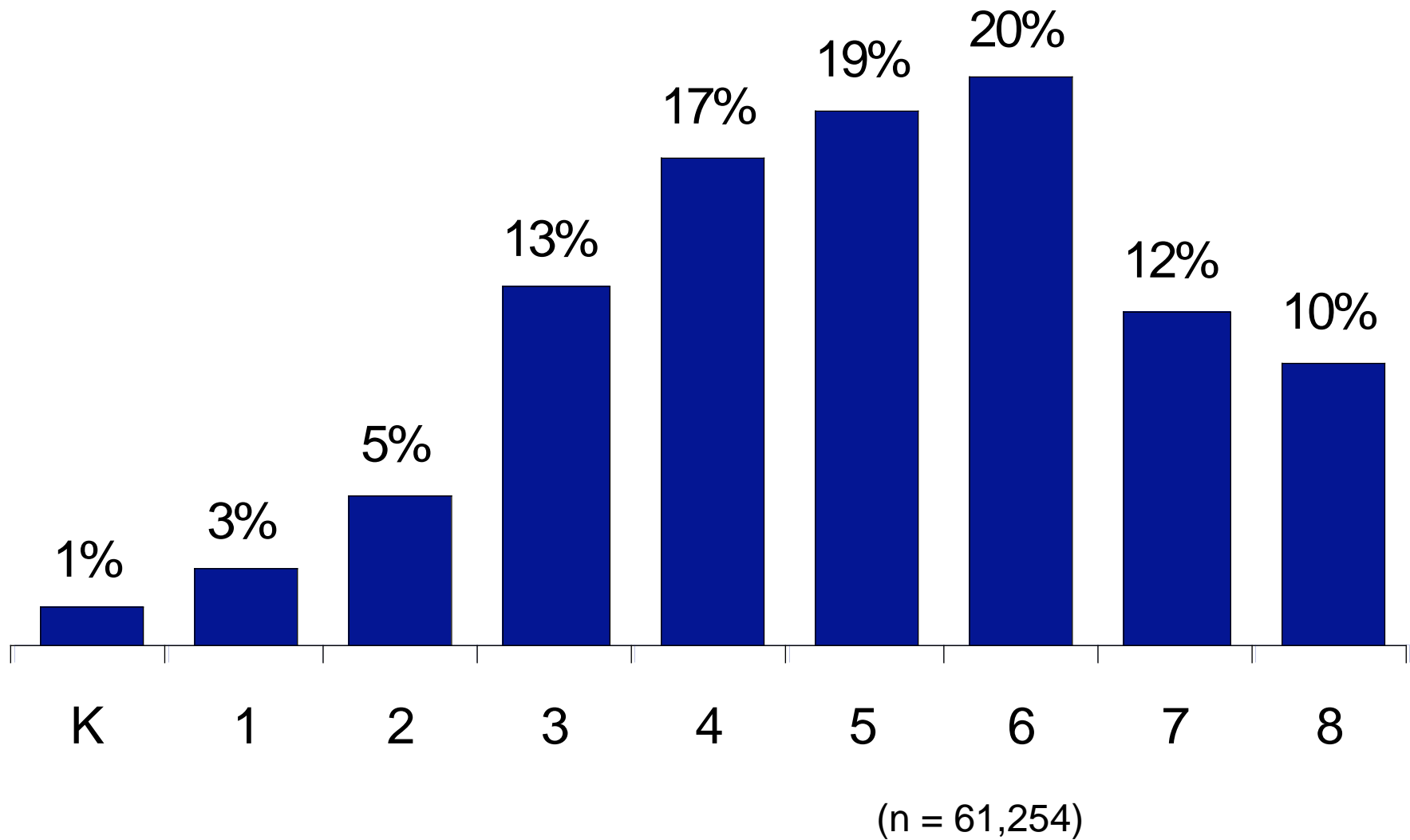
Walking/Biking by Grade



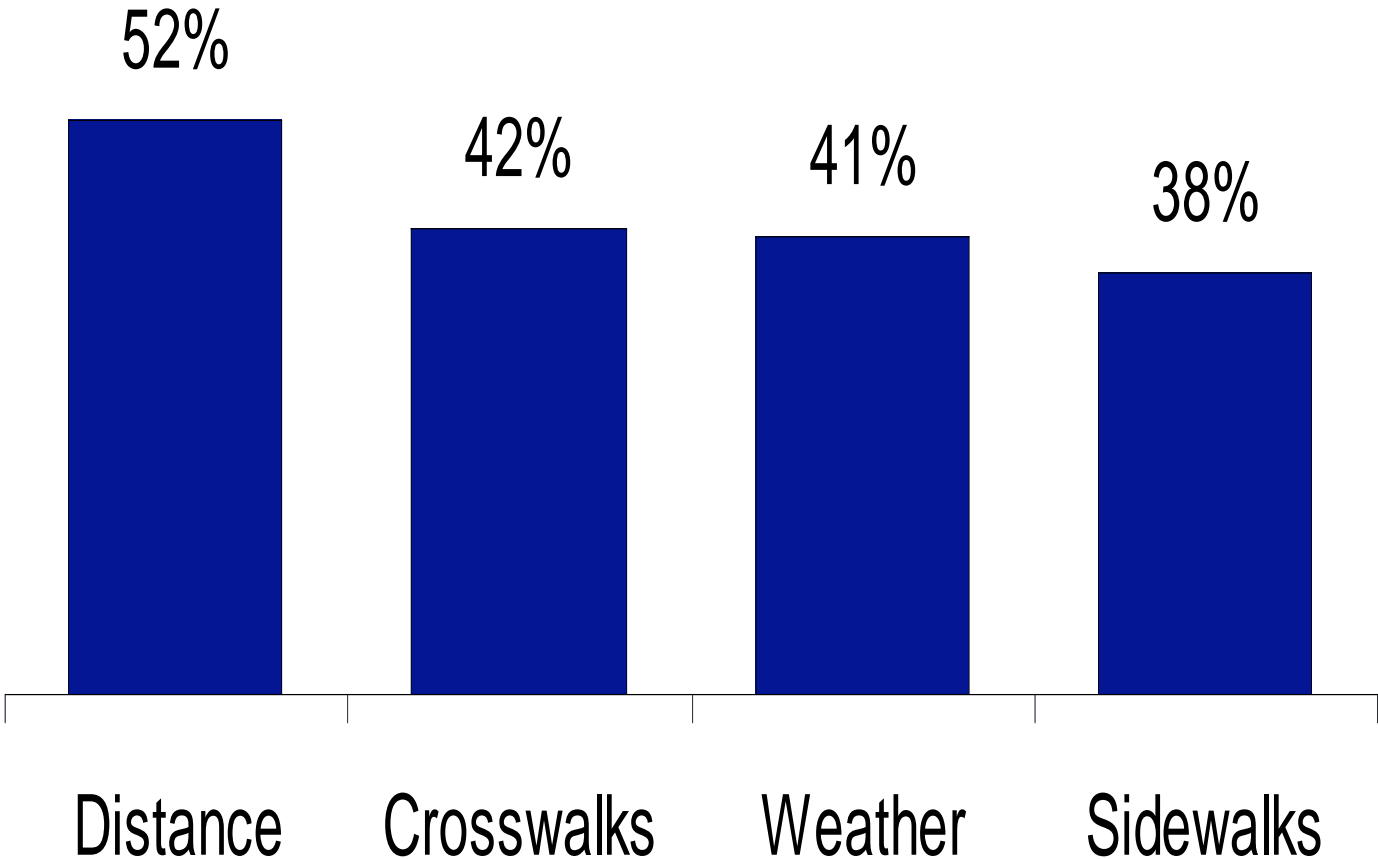
(n = 22,146)



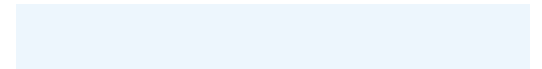
Grade When Parent Would Allow Child to Walk/Bike to School Without an Adult



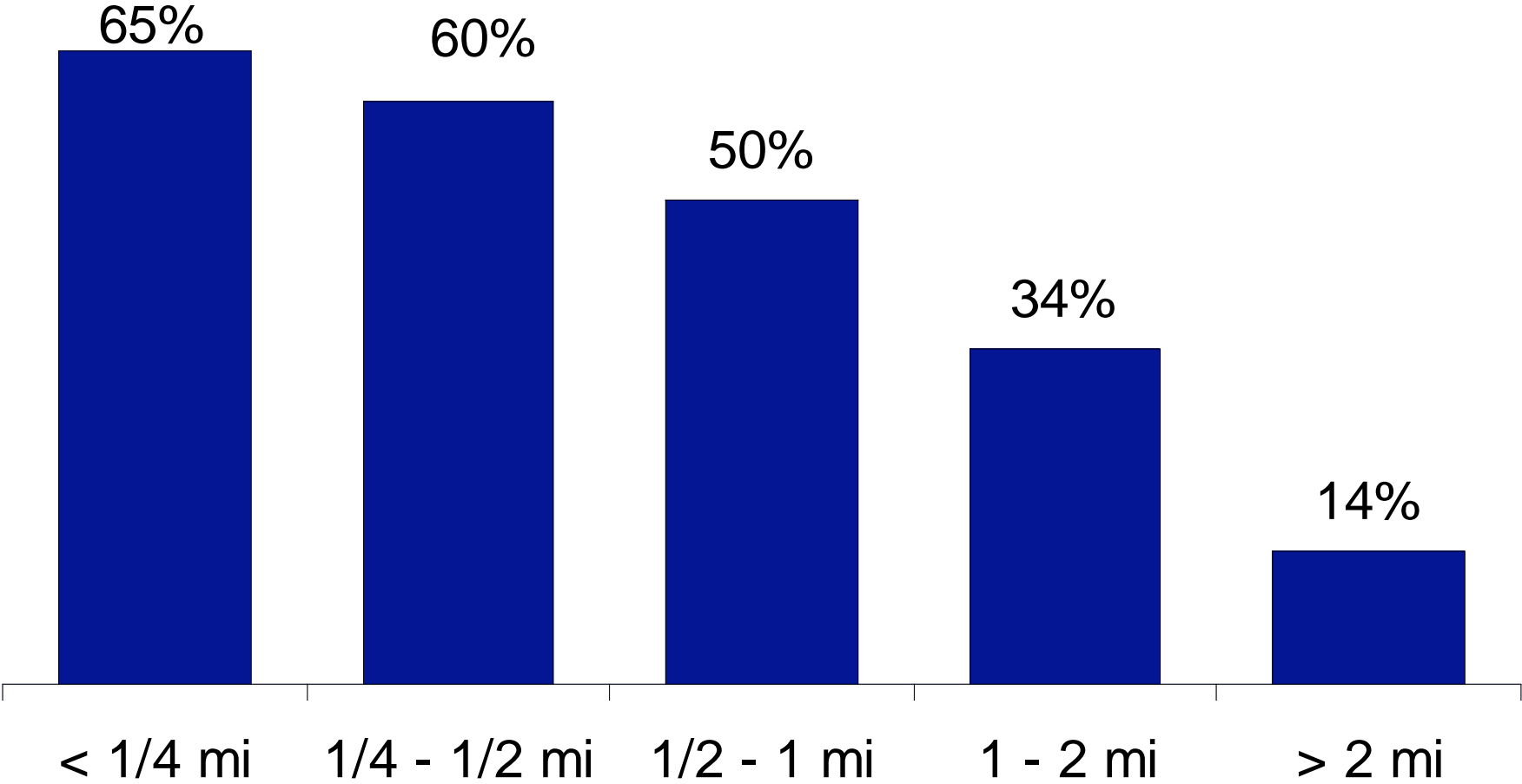
Reasons Parents Allow Child to Walk/Bike



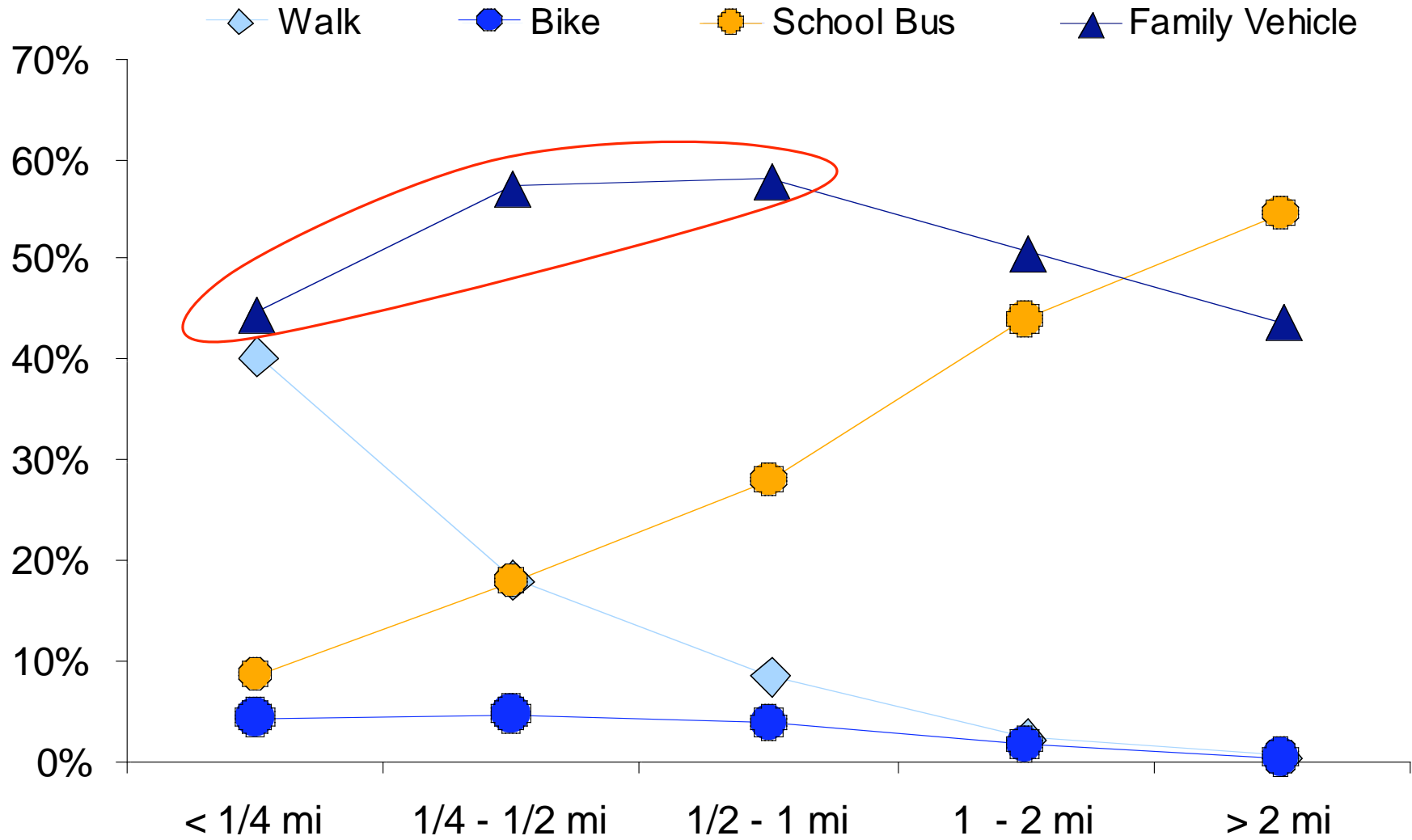
Impact of Distance on Walking and Biking



Child's Interest in Walking/Biking by Distance to School



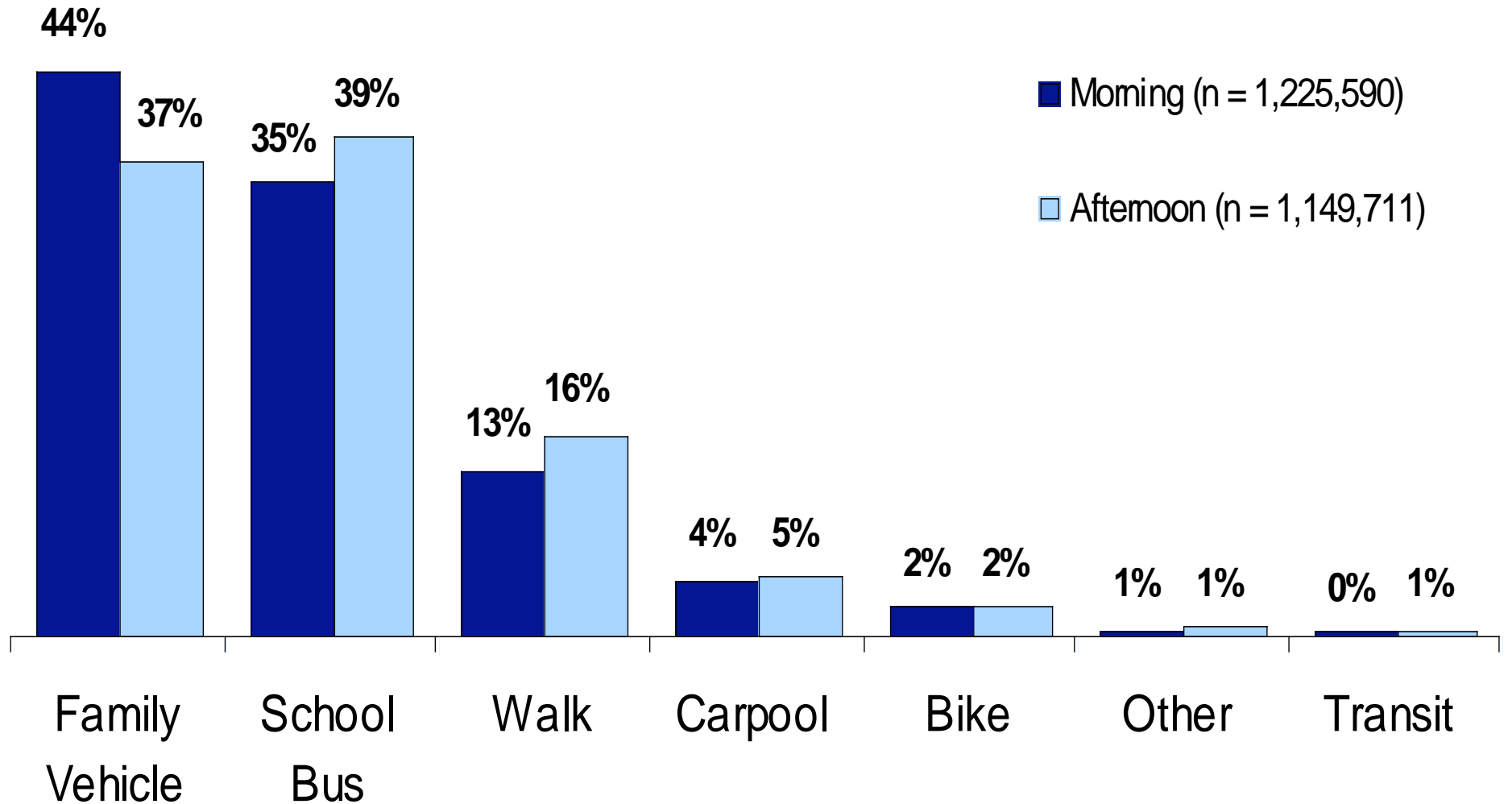
Morning Travel Mode by Distance



Student Travel Tally

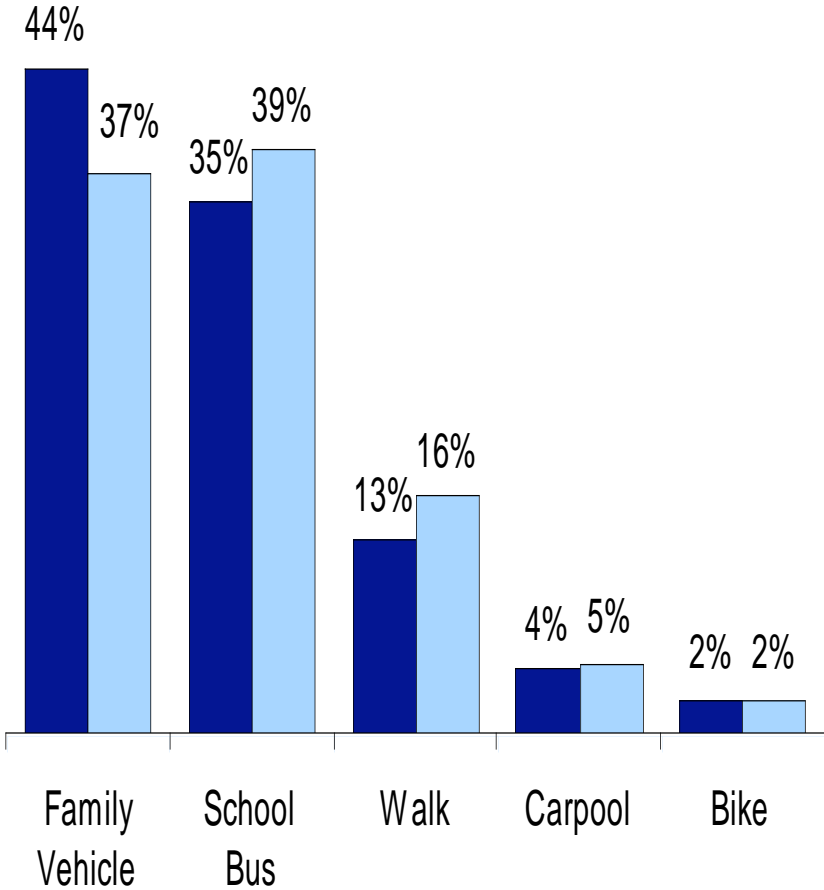


School Arrival and Departure Modes

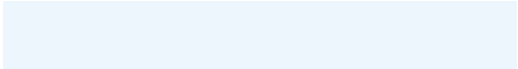
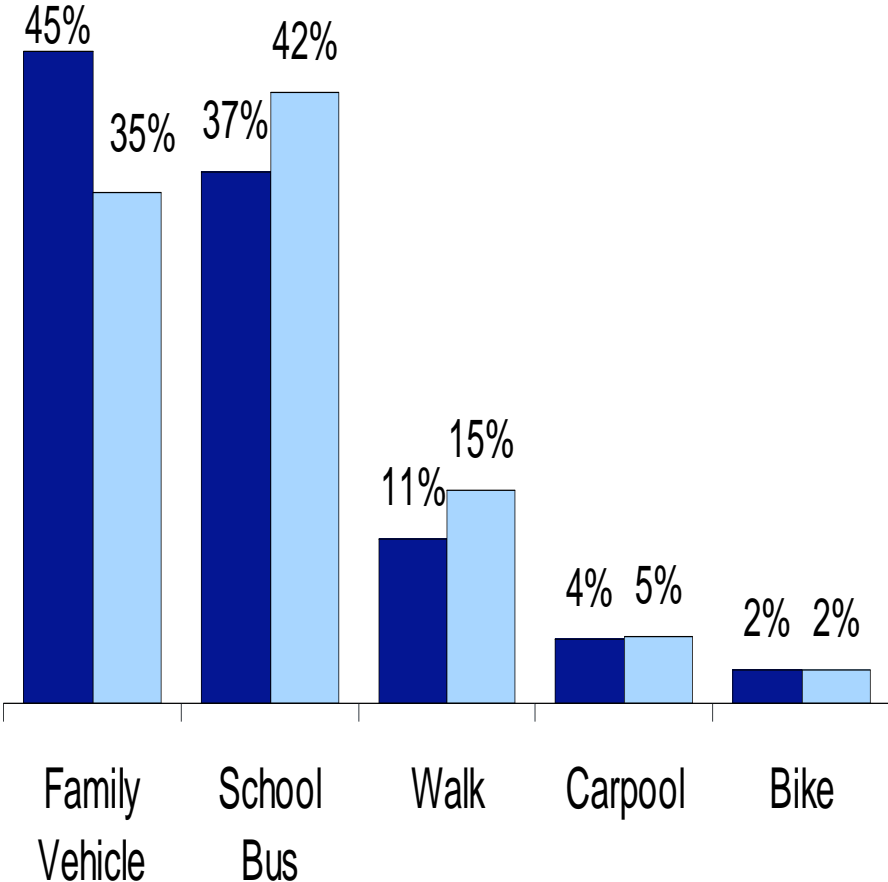


Data Collection Method Comparison

Student Report



Parent Report

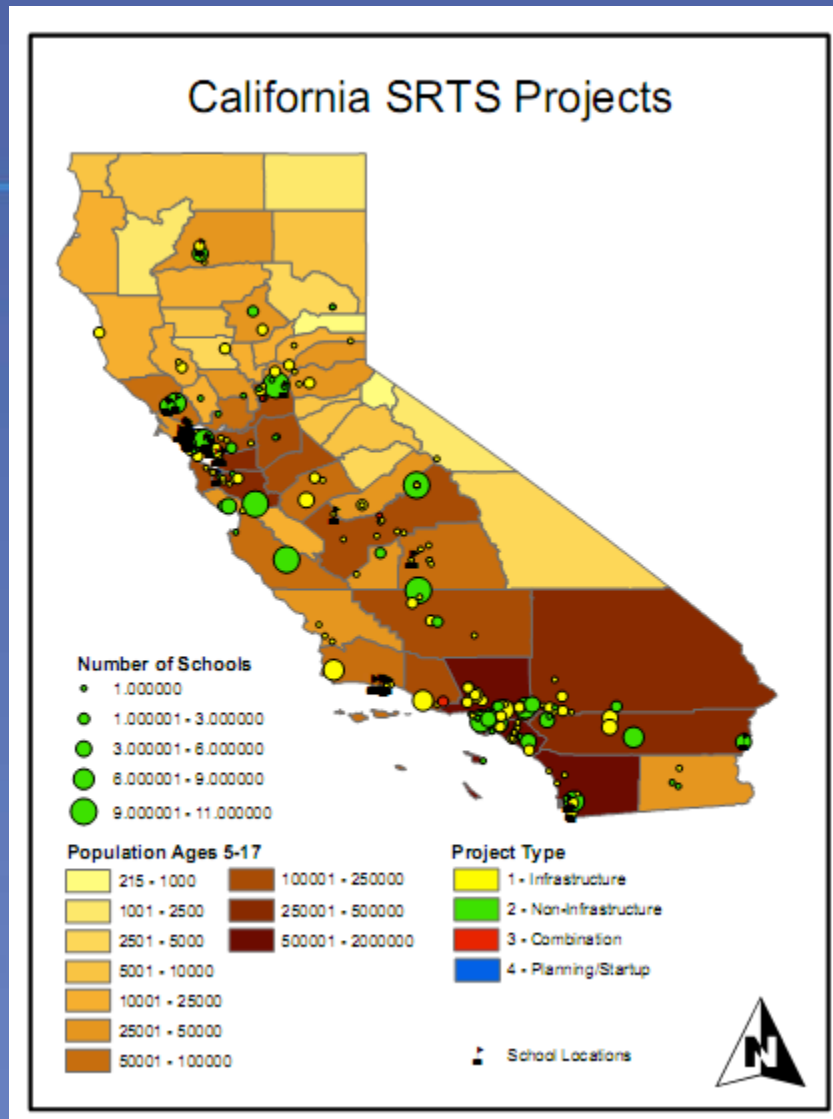


Take away messages

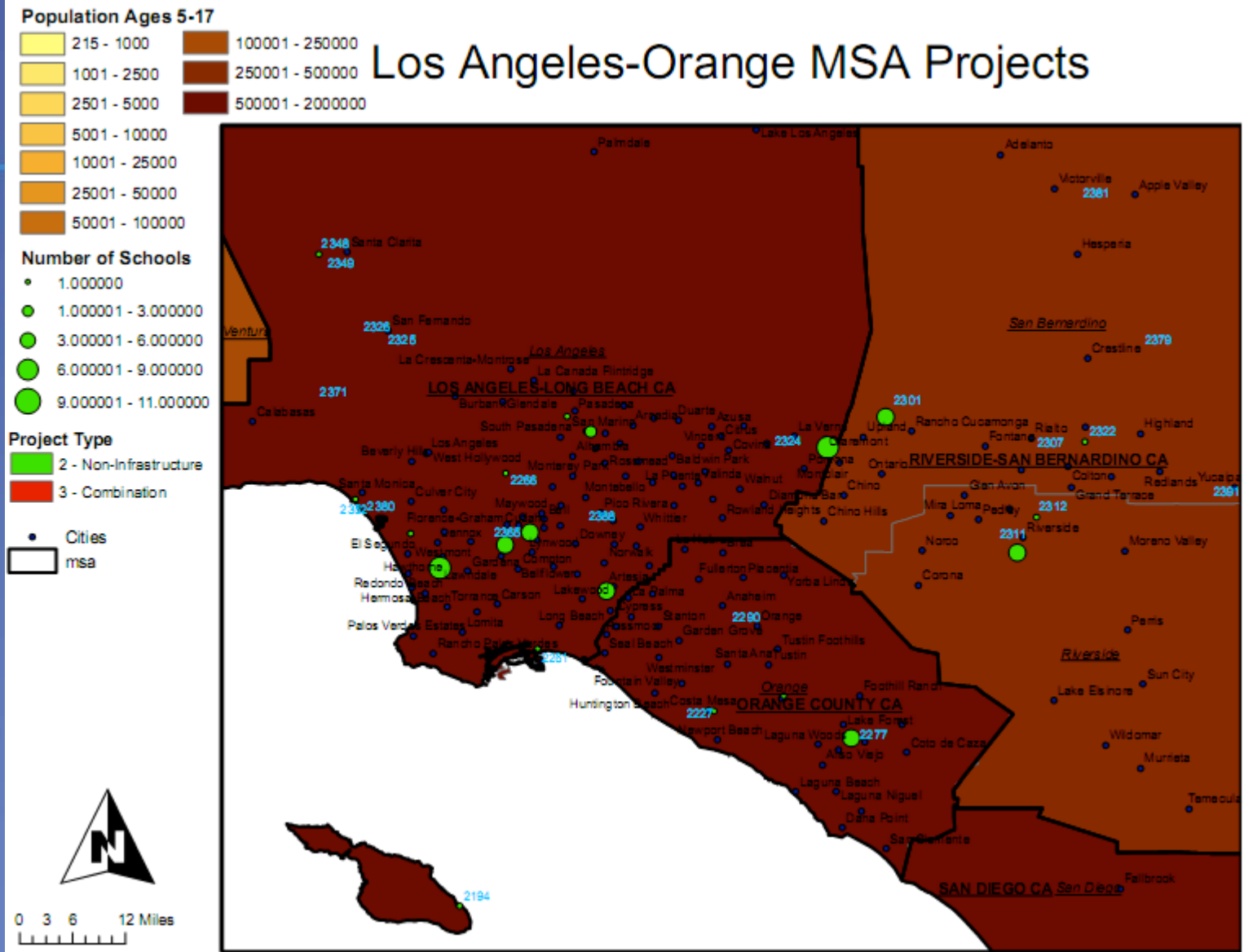
- Distance is influential
- More car trips in AM than PM presents opportunity
- Parent Survey and Travel Tallies are complementary
- Future analysis to examine trends and comparisons



California SRTS Projects



Los Angeles-Orange MSA Projects



Community success stories



Every community faces a different challenge





Case study: Bear Creek Elementary, Boulder, CO

A car-free commute changes habits of entire families

Bear Creek Elementary's Car-Free Commute Program

Student Population: 365 students

Original Percentage of walkers/bikers: 41 percent

Current Percentage: **70 percent and growing!**

Federal funds awarded:

\$ 36,101 Awarded 2008; Shared among 3 schools

\$ 73,000 Awarded 2007; Shared among 6 schools (Education & Encouragement)

\$154,000 Awarded 2009 to City of Boulder to retrofit an intersection

Results:

- 2007-2008 school year: **30 percent reduction in cars and corresponding traffic** congestion during the 2007-2008 school year
- September 2008: students accrued 4,800 miles from 6,600 Car-Free Commute trips in one month



Green Street Elementary School, Brattleboro, VT

Many reasons to walk safely – snow or shine

Green Street Elementary

Student Population: 265 students

Free/Reduced Lunch students: 48 percent

Located in downtown Brattleboro, VT

Federal funds awarded:

\$18,000 Awarded 2006 for education and encouragement

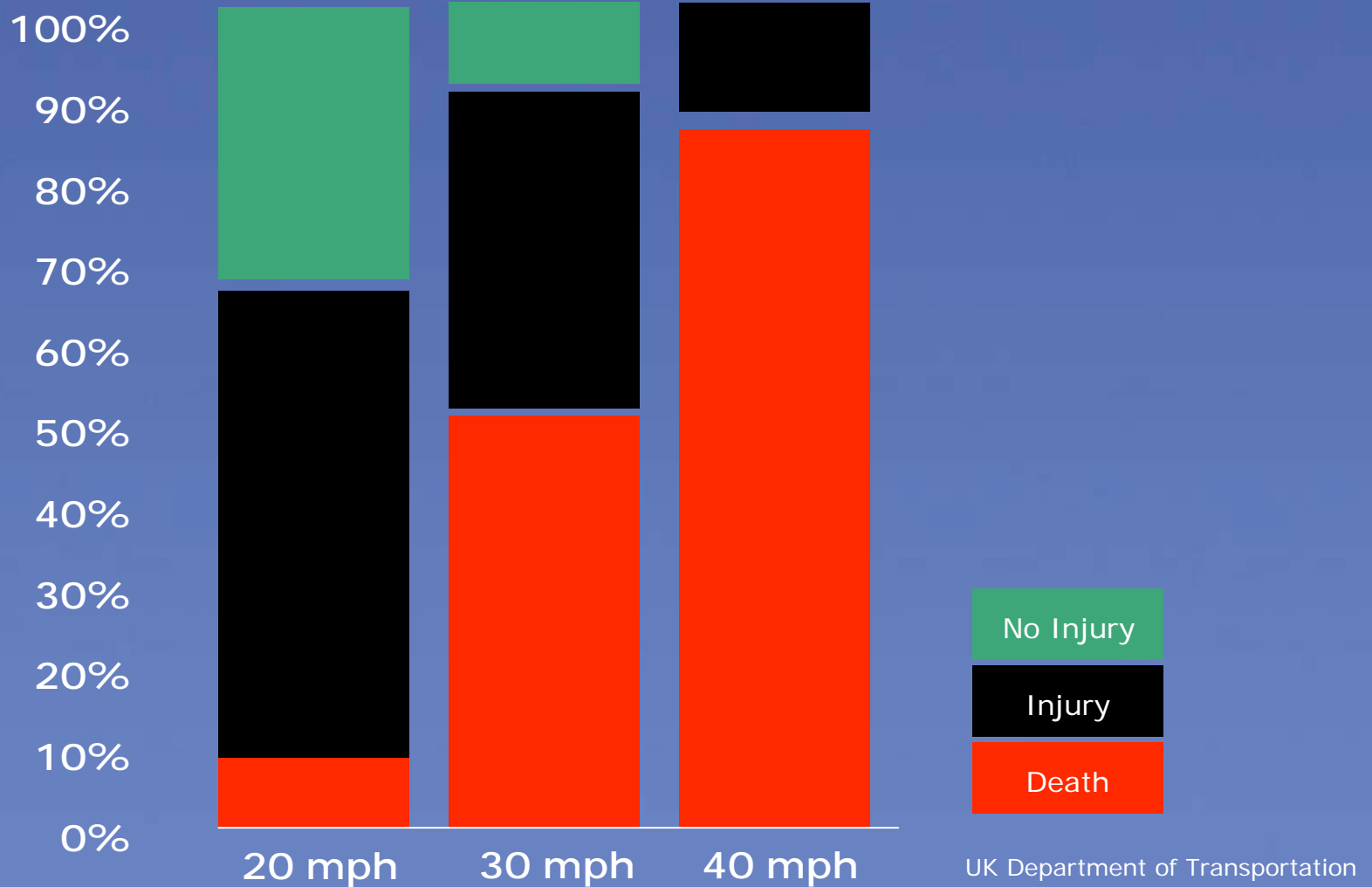
\$ 6,975 Awarded 2008 for education and encouragement

Results:

- **Forty percent reduction in the number of speeding cars** in the school zone
- Education efforts improved walking conditions for adults as well as children
- **Walking school buses have tripled**

Fatalities based on speed of vehicle

A pedestrian's chance of death if hit by a motor vehicle





Auburn School District, Auburn, WA

Saving in transportation costs

Auburn School District, Washington

Number of Schools: 22

Student Population: 14,500

Funds awarded:

\$306,000 total funds awarded 2006 for sidewalks, bike lanes, and other improvements (Federal: \$185,000. State: \$121,000)

Results:

- **\$220,000 in annual savings** in student transportation costs
- At one school, walking and bicycling **reduced the number of buses needed from six to one.**
- Pioneer Elementary School, where 85 percent of students now walk or bicycle to school, reports higher test scores.



Smyrna School District, Smyrna, Del.
Safety is for everyone

School District of Smyrna, Delaware

Number of Schools:	3 schools
Free/Reduced Lunch students:	26 - 42 percent

Federal funds awarded:

\$523,000 Awarded 2007 to 2008 to be shared among three schools

- Projects included sidewalks, crosswalks and curb construction, and education programs

Results:

- **Collaboration** between the school district, Town of Smyrna, and Delaware DOT enabled **improvements** adjacent to one school to be **completed in six weeks**.
- Most of the work was completed before school began in August 2008



Ben W. Murch Elementary School, Washington D.C.

Building consensus — and sidewalks

Ben W. Murch Elementary School, Washington D.C.

Student Population: 500 students
Located in downtown Washington D.C. between two major commuter streets

Federal funds awarded:

\$150,000 Awarded 2008 for infrastructure

Results:

- **Reversed school policy** that prohibited students from bicycling to school without special permission
- **Built community support** for walking and bicycling to school, including neighborhood support for new sidewalk construction
- Implemented an **effective student Safety Patrol program** to enforce safe driving behavior around the school



Alpine Elementary School, Alpine, Utah

Learning to Bee Safe, Bee Fit and Bee Kind

Alpine Elementary School, Alpine, Utah

Student Population: 780 students

Part of the **lowest funded school district in the nation**

Attempted abduction of a 6th-grade student in 2008

Federal funds awarded:

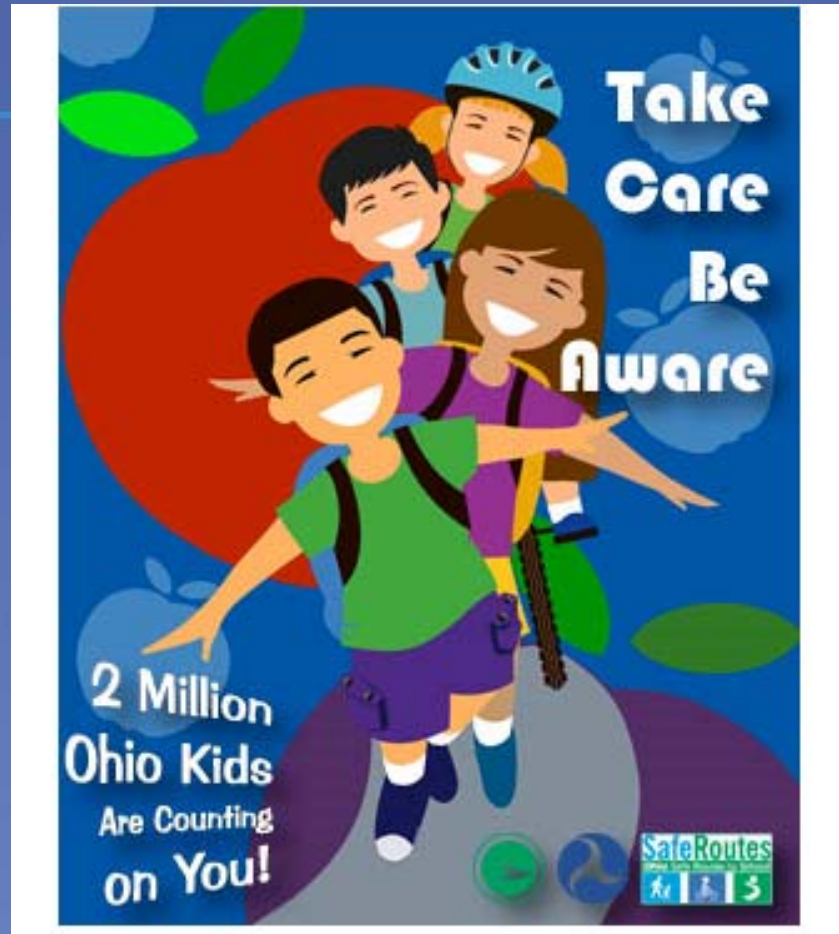
\$12,000 Awarded 2008 for education and encouragement

\$50,000 Awarded 2009 for infrastructure, including solar traffic signs and a bike parking pad

\$9,500 Awarded 2009 for education and encouragement

Results:

- Started a Meals for Miles encouragement program:
 - **Reduced traffic congestion** by 59 motor vehicles (on average)
 - **Increased number of students walking/bicycling** to school by 118 students (on average)
- Students, faculty and staff **walked 26,748 miles in 1 year**



Mansfield City Schools, Mansfield, Ohio
Communities Walking and Rolling Together

Mansfield City Schools, Mansfield, Ohio

Number of Schools:	6 schools
Number of Students:	2,009 students

Federal funds awarded:

\$25,000 Awarded 2008 for non-infrastructure, specifically education, encouragement and evaluation, to be shared among the 6 schools

Results:

- **20% participation in Walk or Roll to School contest** among the six schools
- **Comprehensive media campaign** targeting adults/motorists with safety messages
- **Partnered with Mid Ohio Heart Clinic** to reach over 1,185 students with benefits of exercise messages
- Education for **neighborhoods and community members**

Thank you. Thoughts or questions?

SafeRoutes
National Center for Safe Routes to School



saferoutesinfo.org