

GREENBELT ALLIANCE

Open Spaces & Vibrant Places

A green rectangular sign with a white border, mounted on a metal post. The sign features three lines of white, bold, sans-serif text. The background is a clear, bright blue sky.

BAY AREA
TODAY
POP. 7 MILLION

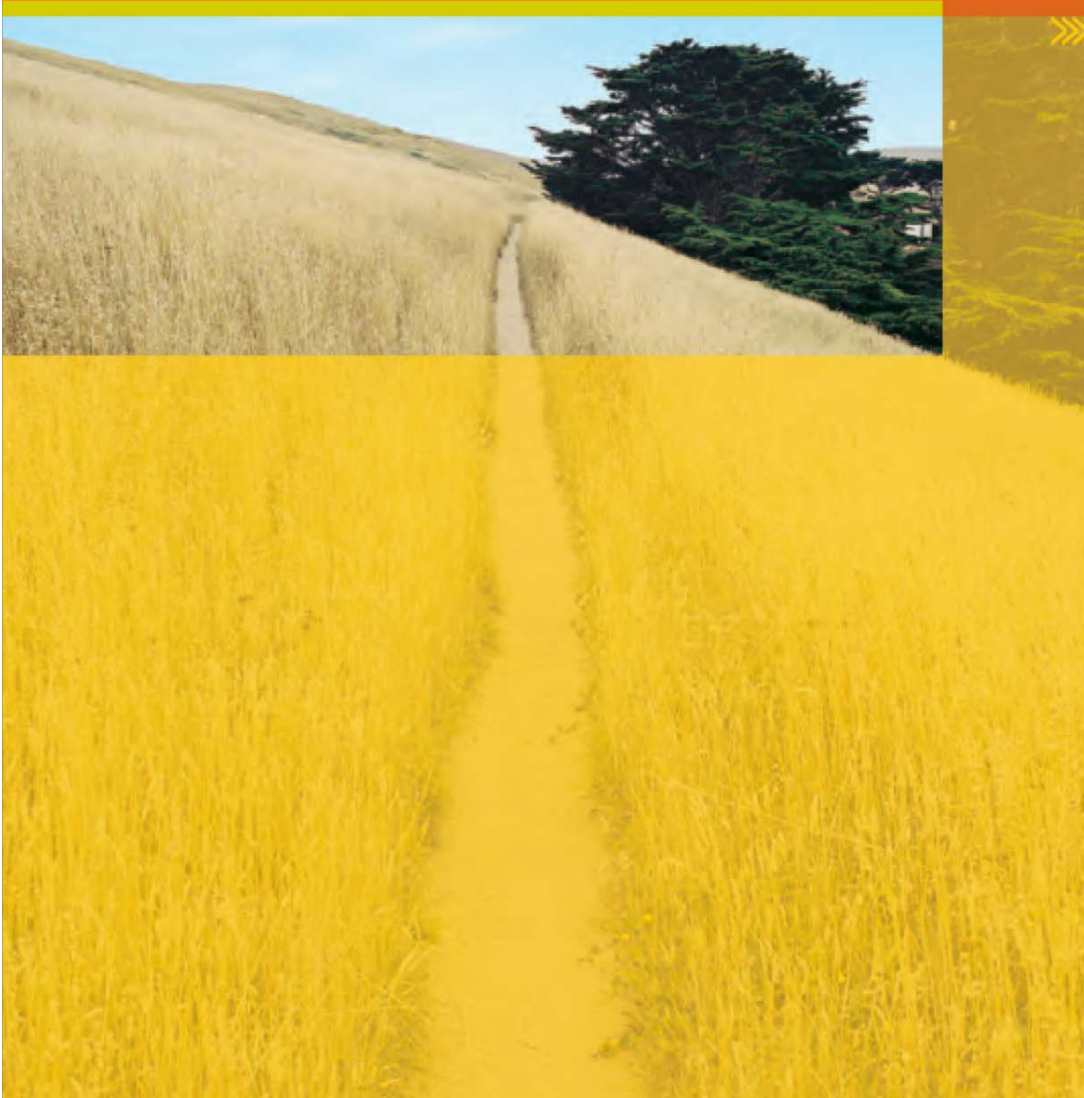
A green rectangular sign with a white border and four mounting screws. The sign is tilted slightly to the right and is set against a clear blue sky. The text on the sign is in white, bold, sans-serif capital letters.

BAY AREA
2035
POP. 9 MILLION

Livable and sustainable for all



Golden Lands, Golden Opportunity
Preserving vital Bay Area lands for all Californians



Open Space Values

Watersheds

Working Farms

Greenbelts

Habitat

Parks & Trails



grow smart bay area

growsmartbayarea.org



THIS IS POSSIBLE

Adding it up

(Opportunity Sites x Neighborhood Types)

+

In-law units

+

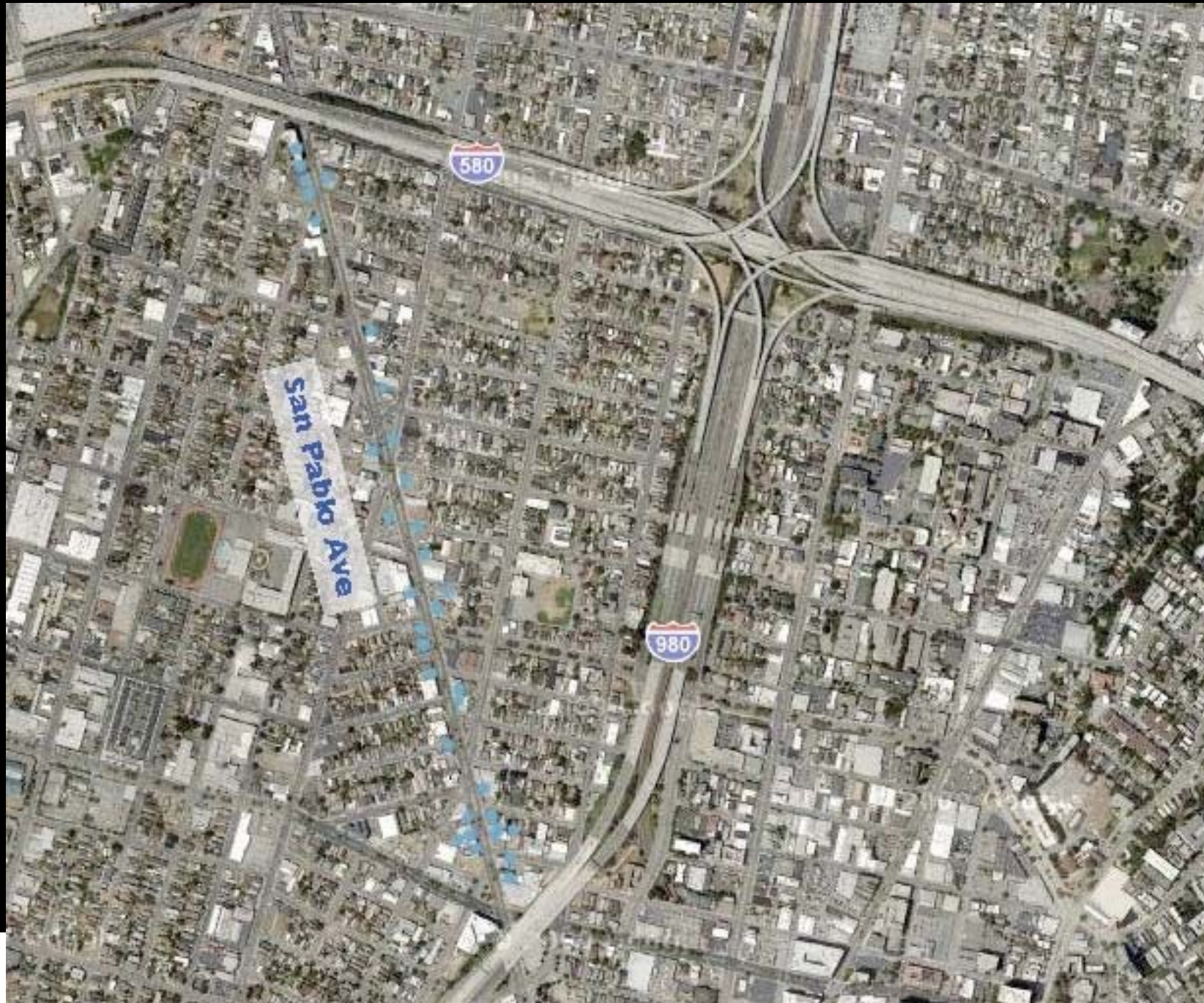
Priority Development Areas

= Plenty of room for new homes and jobs

Opportunity Sites



Opportunity Sites



Neighborhood Types



PLACE-TYPES ON SAN PABLO AVENUE

■ Mixed-Use Low Density

Three-story average commercial, office, and residential buildings intermixed, including some buildings with homes or offices above retail.

■ Downtown Medium High Density

Five-story average of mixed-use buildings surrounded by one- to four-story residential buildings.

■ Mixed-Use Medium High Density

Eight-story or more commercial, office, and residential buildings with many high-rises intermixed.

Source: Smart Growth Strategy / Regional Livability Footprint Project, 2002

Opportunity Sites



Opportunity site x Neighborhood type



+In-law units



+In-law units

FOCUS

a development and conservation strategy
for the San Francisco Bay Area



Adding it up

(Opportunity Sites x Neighborhood Types)

+

In-law units

+

Priority Development Areas

= Plenty of room for new homes and jobs

Opportunity Sites

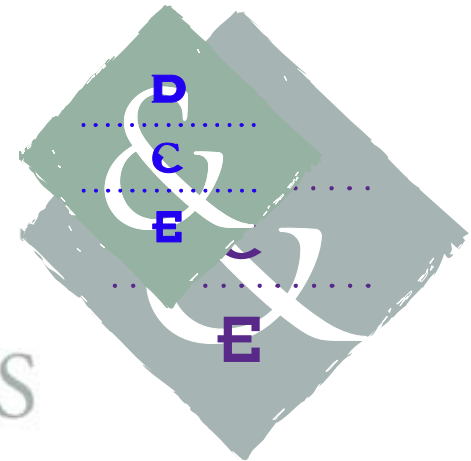


Grow Smart Vision





BERKELEY
iurd INSTITUTE OF URBAN AND
REGIONAL DEVELOPMENT



CALTHORPE ASSOCIATES

URBAN DESIGNERS, PLANNERS, ARCHITECTS



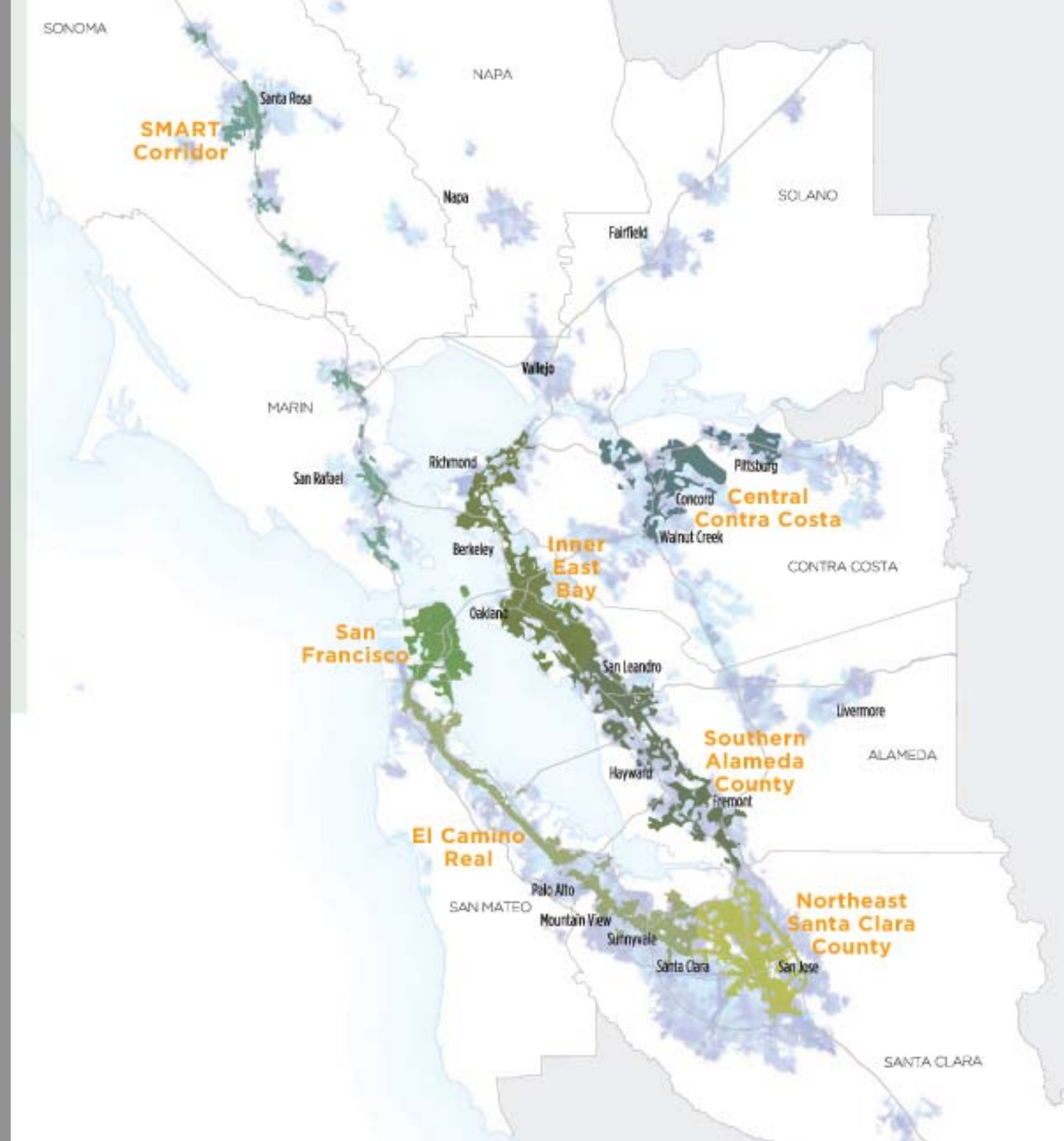
Association of Bay Area Governments



Urban Land Institute **San Francisco**
Serving the Greater Bay Area



STRATEGICECONOMICS



We can choose to grow smart



Build public support



Enact plans and policies



Invest in infrastructure



Who will make it happen:







growsmartbayarea.org