

Sustainability: A National Security Imperative



Nancy Natoli, Office of the Deputy Under Secretary of Defense

Paul Steucke, Fort Lewis, Washington

Lisa Bellefond, The Nature Conservancy

New Partners For Smart Growth Conference February 2010

Seattle, Washington



Purpose

Describe how the military is addressing sustainability through win-win partnerships with outside stakeholders at dozens of locations across the country -- including nearby Fort Lewis, WA.

Sustainability: A National Security Imperative



Nancy Natoli
Office of the Deputy Under Secretary of Defense

New Partners For Smart Growth Conference February 2010
Seattle, Washington



The National Security Context

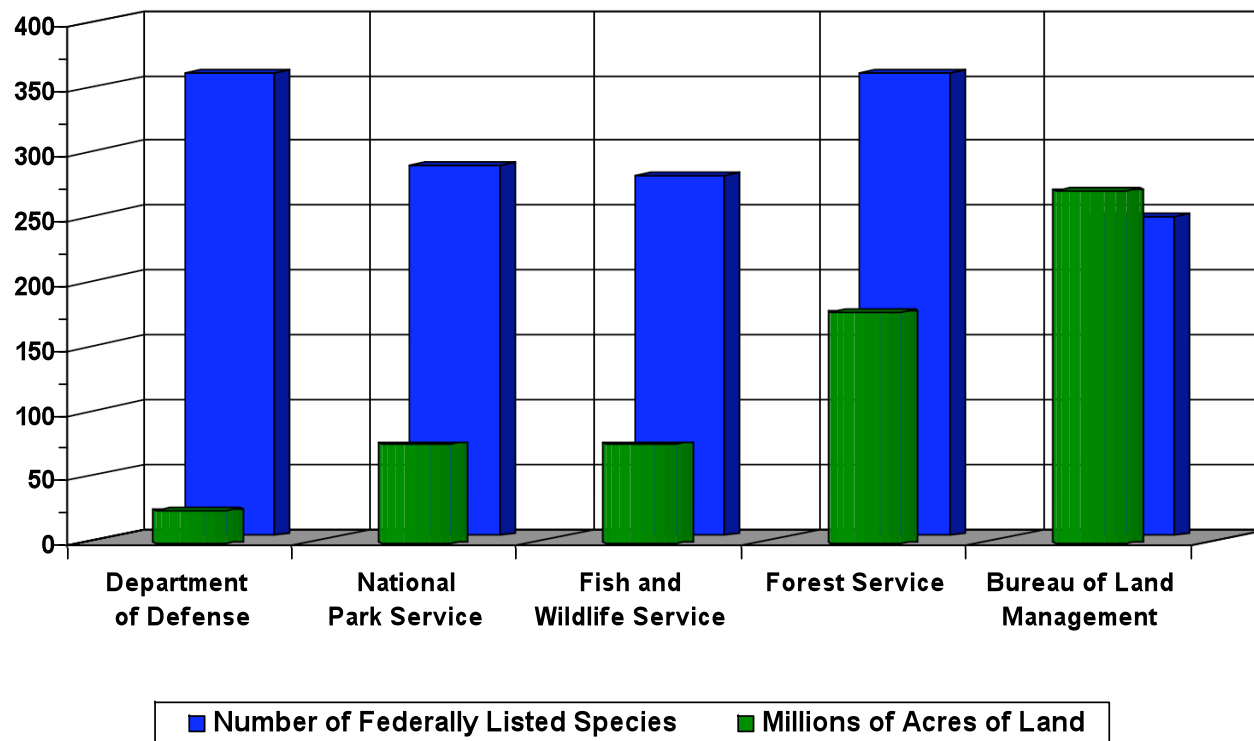
- Climate change impacts are threat multipliers:
 - Drought
 - Rising sea levels
 - Declining food production
 - Species extinction
 - Habitat destruction
 - Disease
 - Massive migration
- ➔ Political instability, internal conflicts and extremism
- ➔ Increased authoritarianism and radical ideologies
- ➔ Increasing need for US stabilization
- ➔ Threat to military operations, manpower and mission



*Sustainability is more than environmental management and energy security;
Sustainability is a National Security Imperative!*



DoD Manages More Listed Species and the Number is Growing...

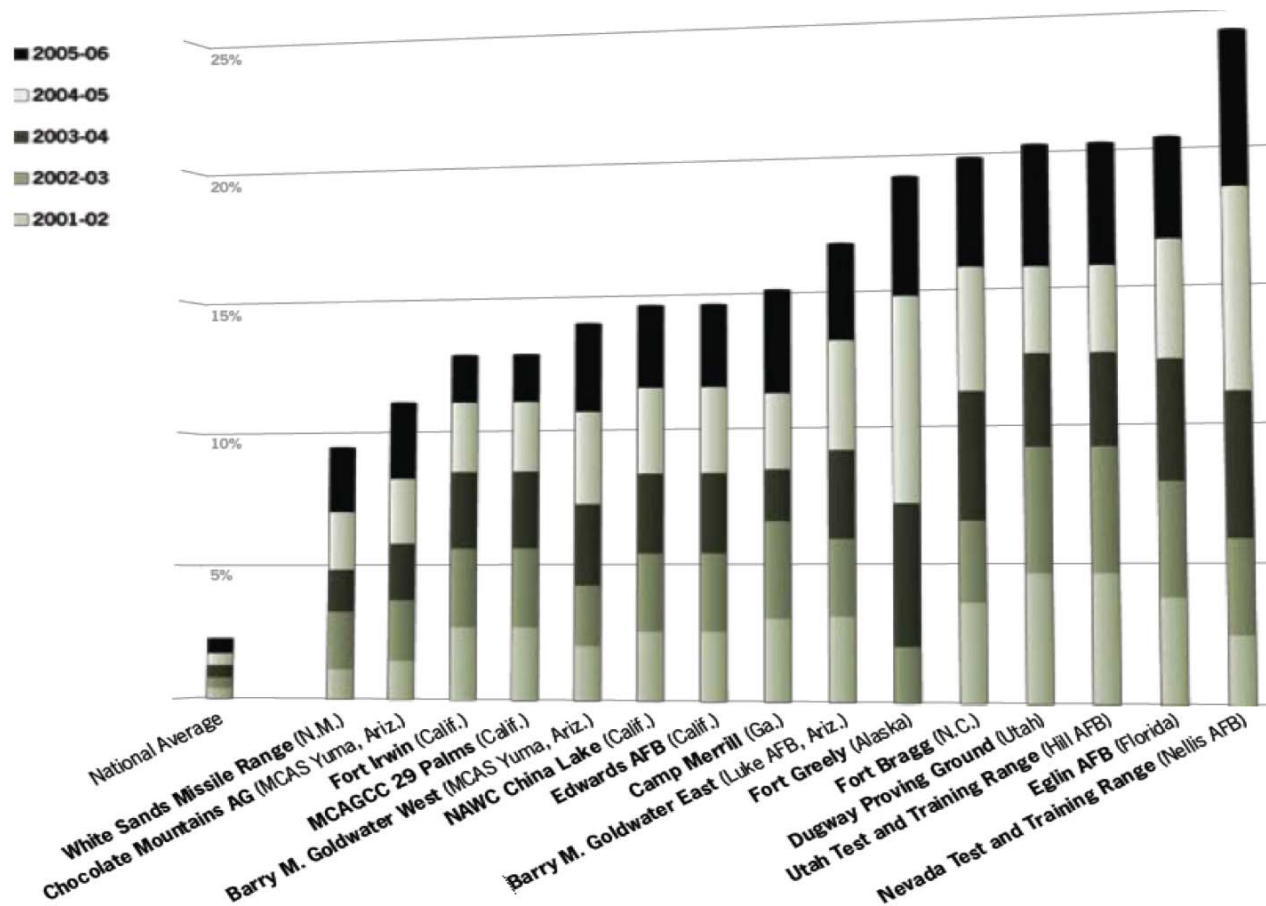


Source Federal Lands and Endangered Species: The Role of Military and Other Federal Lands in Sustaining Biodiversity
Data Source: NatureServe and its Natural Heritage member programs. Copyright: 2008 American Institute of Biological Sciences



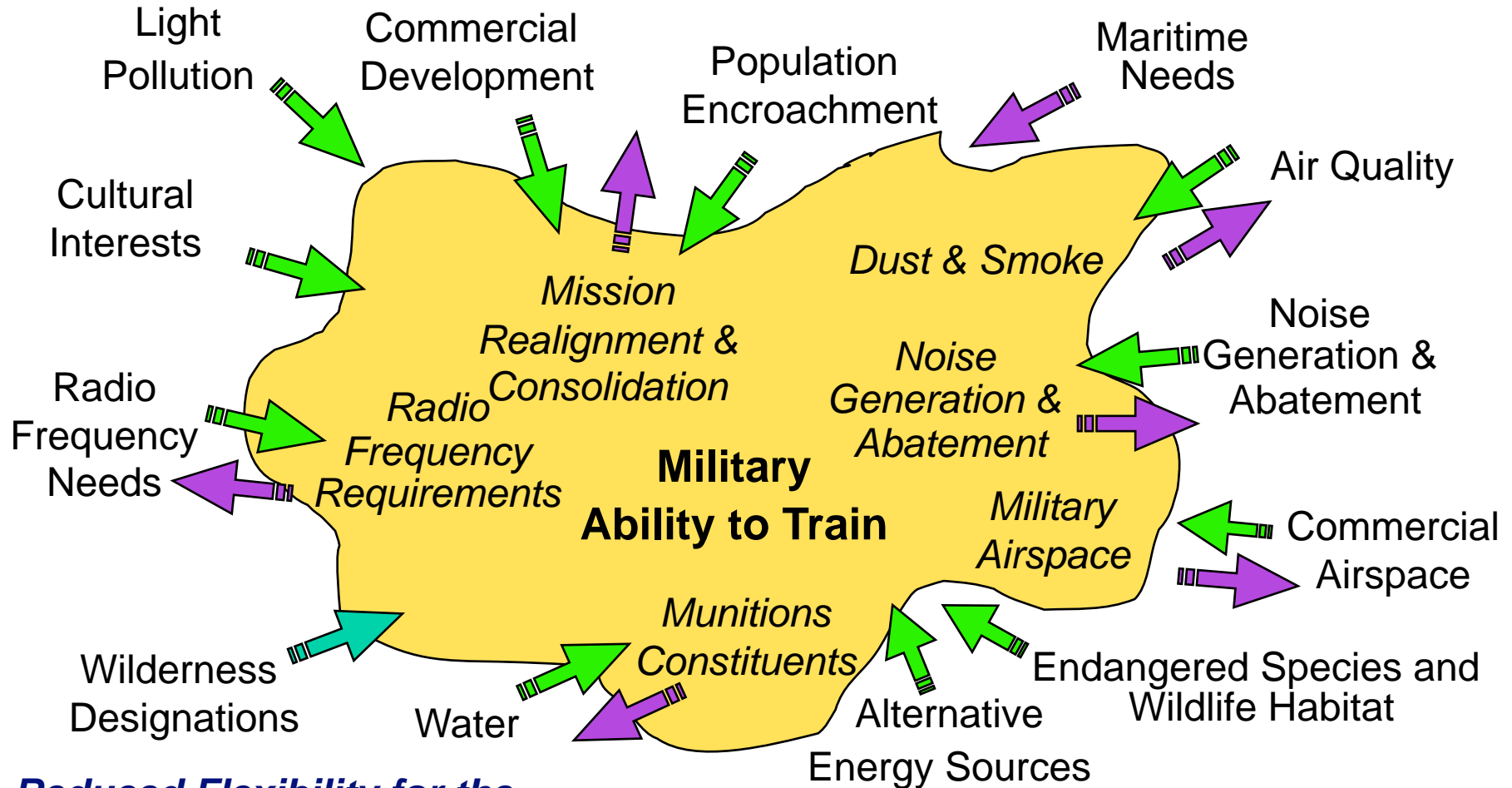
Population Growth of Military Neighbors

Annual population growth near military ranges and installations, 2001-06





Encroachment Pressures

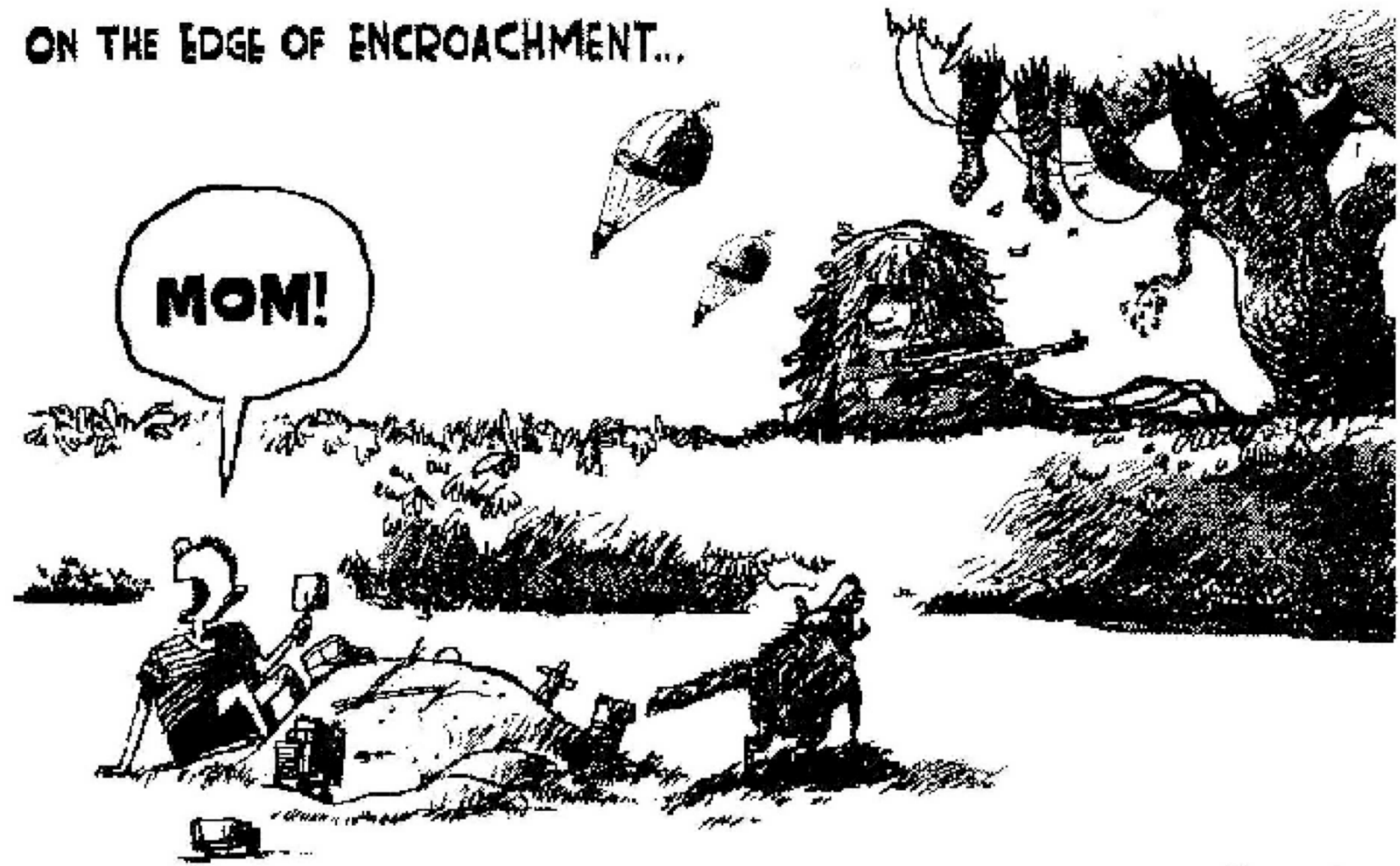


Reduced Flexibility for the Military and the Community

It's a Two Way Street

ON THE EDGE OF ENCROACHMENT...

MOM!



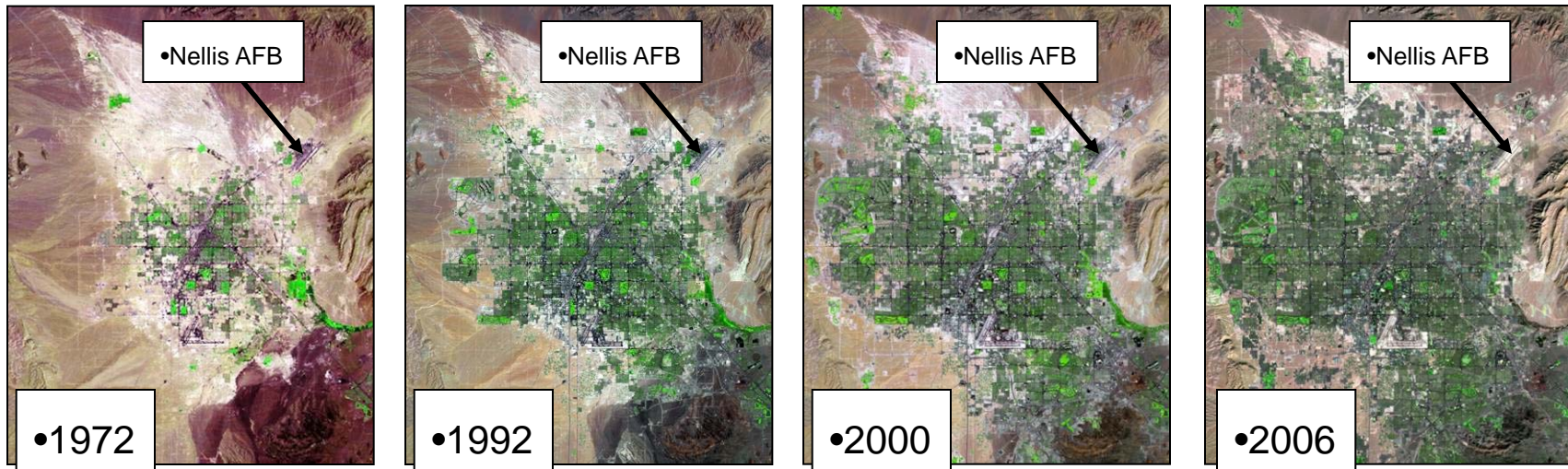
GATERRY
MARTINS FOREVER



Missions Are at Risk

Encroachment: *External and internal factors that inhibit the ability to use ranges, airspace, and other operating areas to conduct effective training and testing.*

- Readiness is fundamentally linked to the quality and frequency of testing and training
- Realistic training requires the sustainment of realistic training environments
- The impact of encroachment is broad — affecting our ability to execute realistic air, ground, and naval training across the nation, as well as beyond its borders.

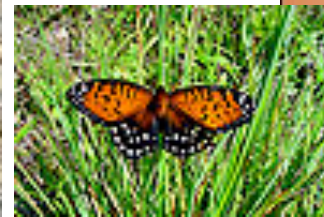


Las Vegas and Nellis AFB: urban growth over time



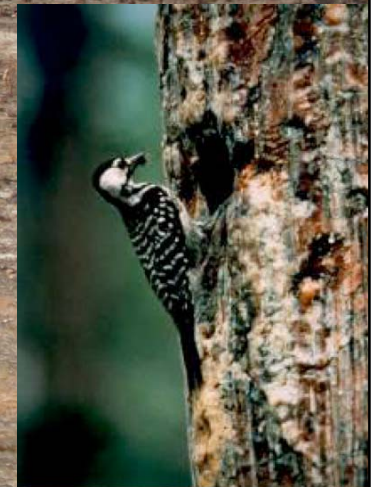
Encroachment Restrictions to Training and Testing

- Airfield landing and takeoff corridors are limited
- Night vision training is no longer possible
- Noise complaints
- Development destroys or fragments habitat, forcing more endangered species on-post



Fort Bragg Private Lands Initiative

Sikes Act, 16 USC 670c-1(a): Authorizes cooperative agreements with private entities to benefit DoD natural resources





Newest Compatible Land Use Tool

- Authority (10 USC 2684a) for conservation and compatible land use partnering provided by Congress as part of FY03 National Defense Authorization Act (NDAA)
- Non-federal partnerships to:
 - Limit incompatible land uses near military bases
and / or
 - Preserve habitat to relieve environmental restrictions on military activities
- Congressional intent:
 - Willing sellers only
 - Cost share with partners
 - Flexibility on agreements
 - Robust selection process
 - Annual reporting





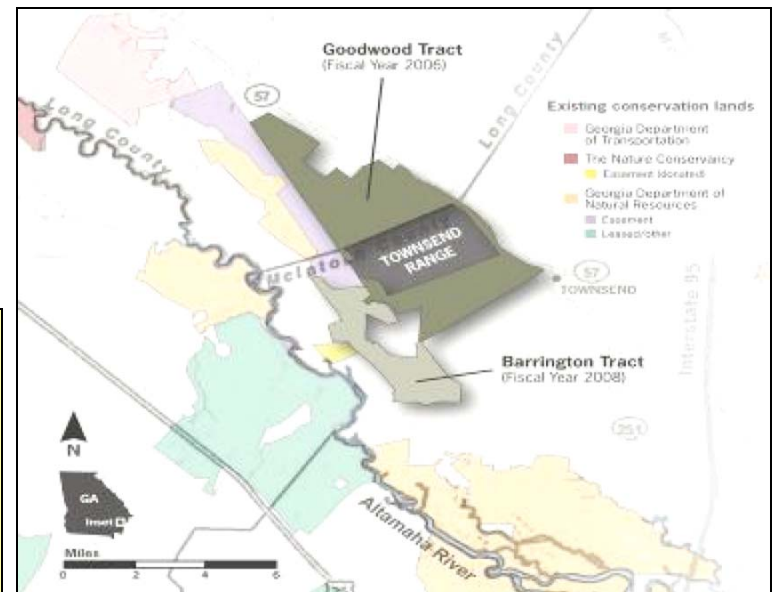
Readiness and Environmental Protection Initiative (REPI)

A Key Tool of DoD's Sustainable Ranges Initiative

- Promotes the twin imperative of military training and testing readiness and sound conservation stewardship
- Supports cooperative agreements with partners to acquire key conservation easements from willing sellers
- Limits incompatible land uses and preserves high-value habitat

Service REPI Needs, President's Budget Request, and Actual Appropriations

Fiscal Year	Service Need	President's Budget	Appropriation
FY05	\$9 million	\$20 million	\$12.5 million
FY06	\$62.1 million	\$20 million	\$37 million
FY07	\$156.8 million	\$30 million	\$40 million
FY08	\$92.2 million	\$30 million	\$46 million
FY09	\$122.6 million	\$40 million	\$56 million
FY10	\$129.7 million	\$36.7 million	\$54.7 million



REPI has protected over 85,000 acres outside of 53 installations in 23 states.



Win-Win Partnerships

Partners are fundamental to REPI success!

- Land Trust Alliance
- Trust for Public Land
- The Nature Conservancy
- International City/County Managers Association
- The Conservation Fund
- National Association of Counties
- American Farmland Trust
- Land Legacy
- Harford Land Trust
- Oahu Conservation Partnership
- Fallbrook Land Conservancy
- Kansas Land Trust
- Prince William Conservation Alliance
- North Carolina Coastal Land Trust
- Sandhills Area Land Trust
- Chattahoochee Land Trust in Georgia
- Include state and county partners





How many different ways can we use REPI?

- Ecosystem services
 - Species, wetlands, carbon, cultural resources
- Land exchange
- Renewable energy
- Hunting or other revenue generation
- Water quality trading





REPI Projects at 53 Installations Across the Nation

